

NET ZERO CITIES



EU MISSION PLATFORM

CLIMATE NEUTRAL AND SMART CITIES



Funded by
the European Union

WELCOME

The NetZeroCities

Community of Practice



EU CITIES MISSION

Shape the future of urban sustainability
NetZeroCities Community of Practice



Funded by
the European Union



Funded by
the European Union





Community of Practice

What is a Community of Practice?

A community of practice (CoP) is **a space gathering a group of people who share a common interest, profession, or passion and actively engage in learning and collaborating to enhance their knowledge and skills in that area.**

Purpose

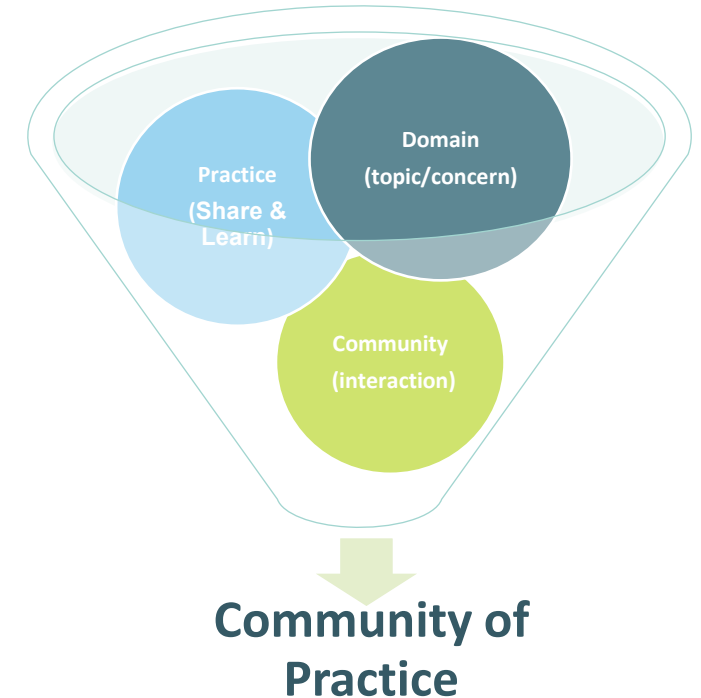
Share and learn (Experience, best practices and case studies, expertise)

Peer-to-peer exchange

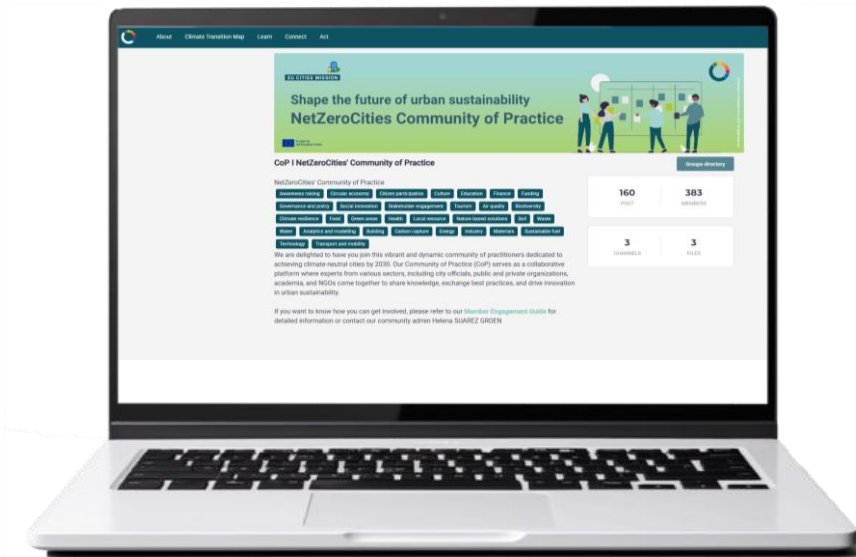
Bring new insights and understandings of the domain

How

Many communities of practice rely on face-to-face meetings as well as web-based collaborative environments to communicate, connect and conduct community activities.



CoP on Portal



OFFICIAL LAUNCH IN SEPTEMBER

SINCE THEN...

- 400 Members
- 160 Posts
- Most active group on the portal

MEMBERS OF COP

- Cities
- Private companies
- Organizations
- NGO's
- Researchers
- Students
- Field experts

CLIMATE NEUTRALITY FOR CITIES

- Nature-based solutions
- Urban energy systems
- Mobility
- City data & data tools
- Urban planning
- Citizen engagement
- Social innovation
- Circular economy
- Climate adaptation



Funded by
the European Union

CoP Webinar

Just Transition: Orchestrating just transitions in the built environment

A multi-stakeholder dialogue on how cities, companies and NGO's can work together to tackle climate justice

- **Deeper understanding** of how climate justice principles can be applied in the built environment
- **Practical examples of just transition initiatives**
- **Awareness of shared needs and barriers** faced by diverse stakeholders in advancing a just transition
- **Opportunities for connection** with peers across sectors, laying the groundwork for ongoing dialogue and joint action on just transition



Meet the speakers:



Neda Kostandinovic
International Relations
Coordinator,
Office of the Chief
Architect, Barcelona City



**Jose Luis Fdez.
Casadevante Kois**
Técnico,
Grupo Cooperativo
Tangente



Timothy Clement
Director of Social Value &
Sustainability for Morgan
Sindall Construction



Liisa Perjo
Senior Expert,
Demos Helsinki



Marcial Silva Mercado
Strategic Urban Planning,
Dark Matter Labs



Funded by
the European Union



13.11.2025

NZC Community of Practice

Orchestrating just transitions in the built environment

A multi-stakeholder dialogue on how cities, companies and NGOs can work together to tackle climate justice



Funded by
the European Union



Introduction: Just Transitions in the built environment

Marcial Silva Mercado (Dark Matter Labs) & Liisa Perjo (Demos Helsinki)



Funded by
the European Union

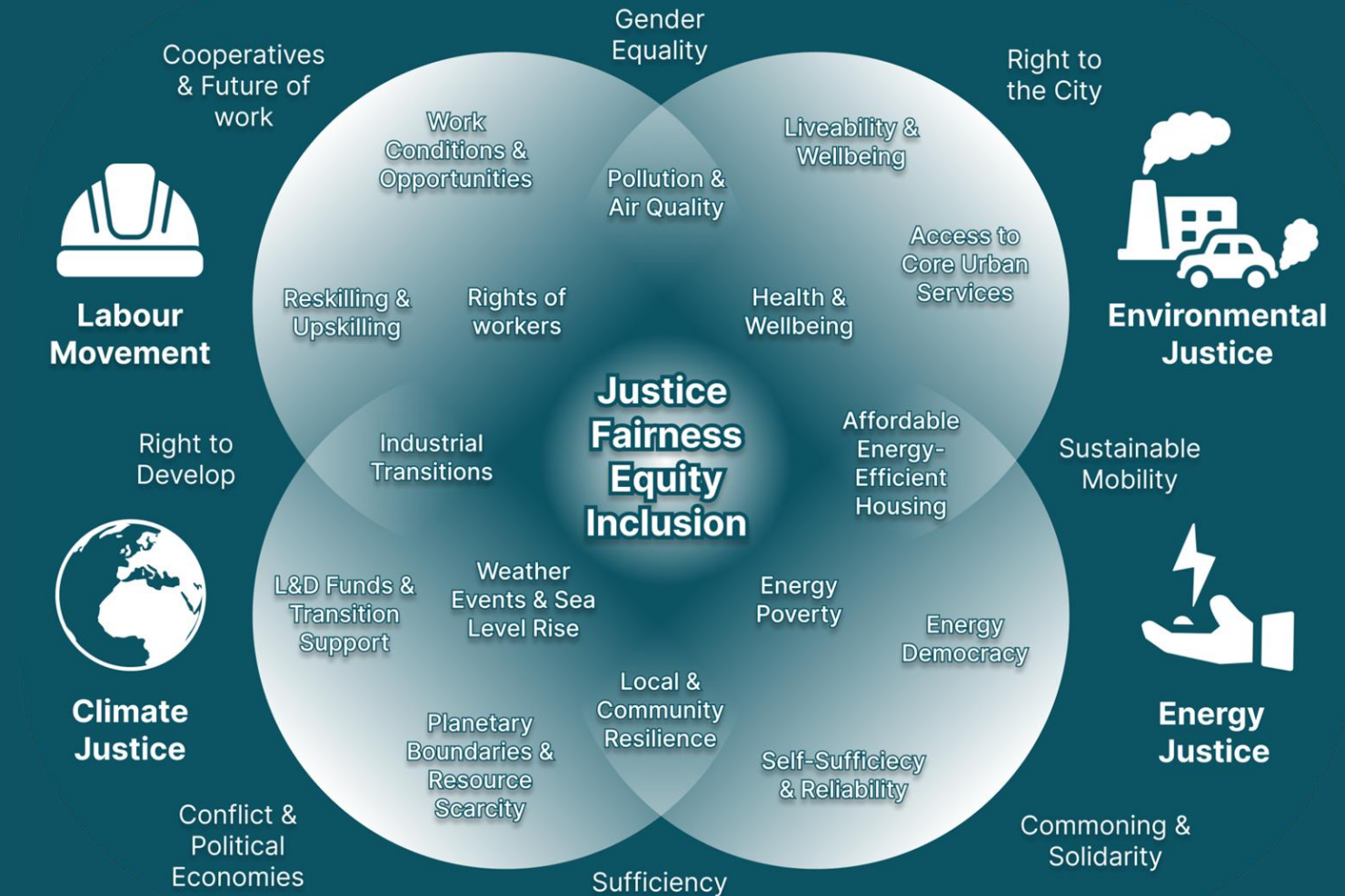
Diverse starting points

Shaped by diverse movements & disciplines, converging on demands for **equity & fairness**.

- **Labour movements** advocating for worker protections in the face of industrial transition
- **Environmental activists** calling for healthy safe living environments
- **Climate advocates** demanding accountability for the uneven impacts of climate change globally
- **Energy experts** pushing for inclusive access to clean affordable energy

The **just transition** has become a central priority in global decarbonisation efforts, recognised in the **Paris Agreement**, referenced in the **European Green Deal**, and operationalised locally in commission task forces, and policies.

In cities today, these claims intersect with urban agendas such as affordable housing, accessible mobility, and inclusive public spaces.

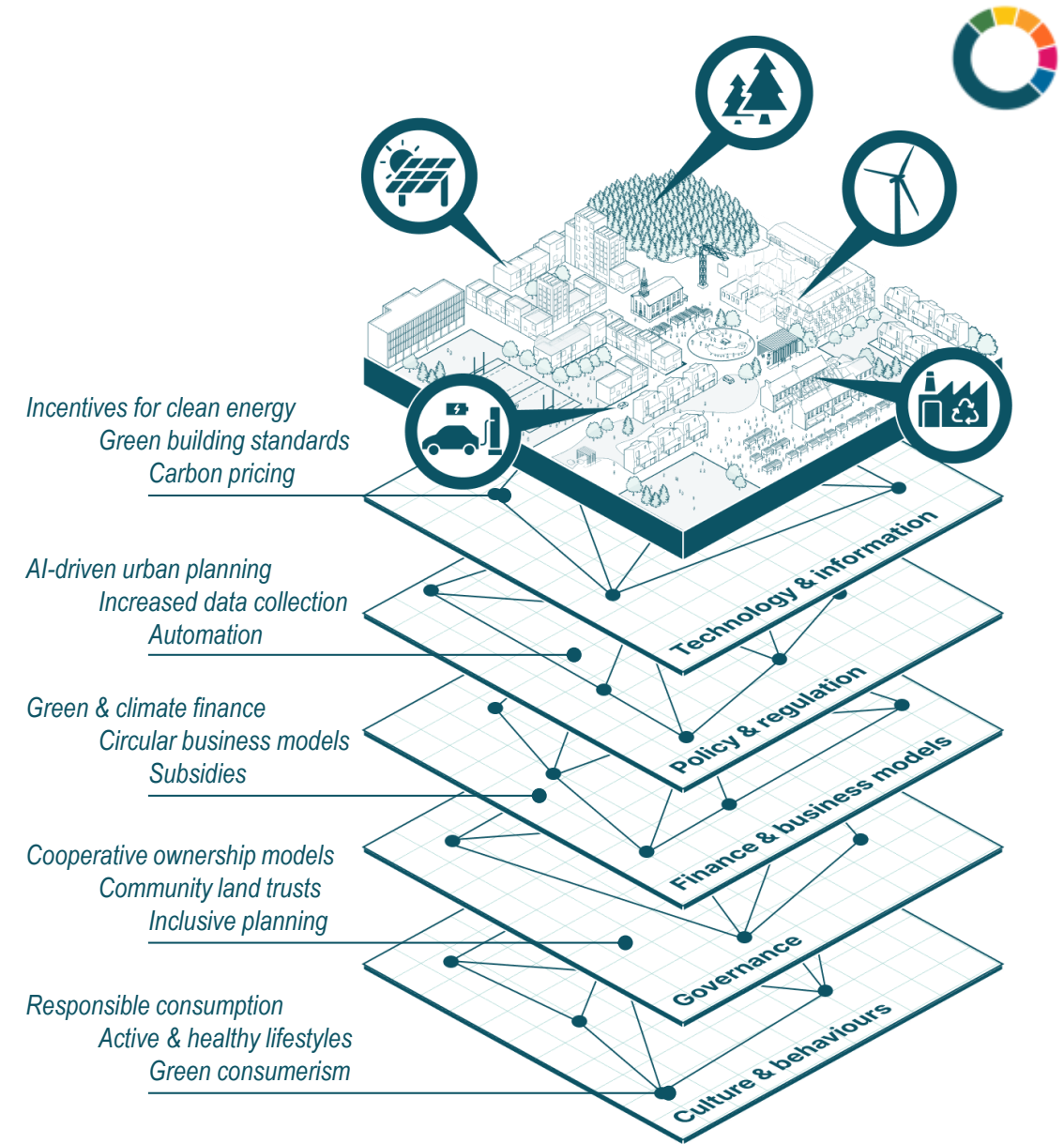


A deep shift across systems

The transition is often described as phasing out carbon-intensive structures, by replacing them with low carbon alternatives

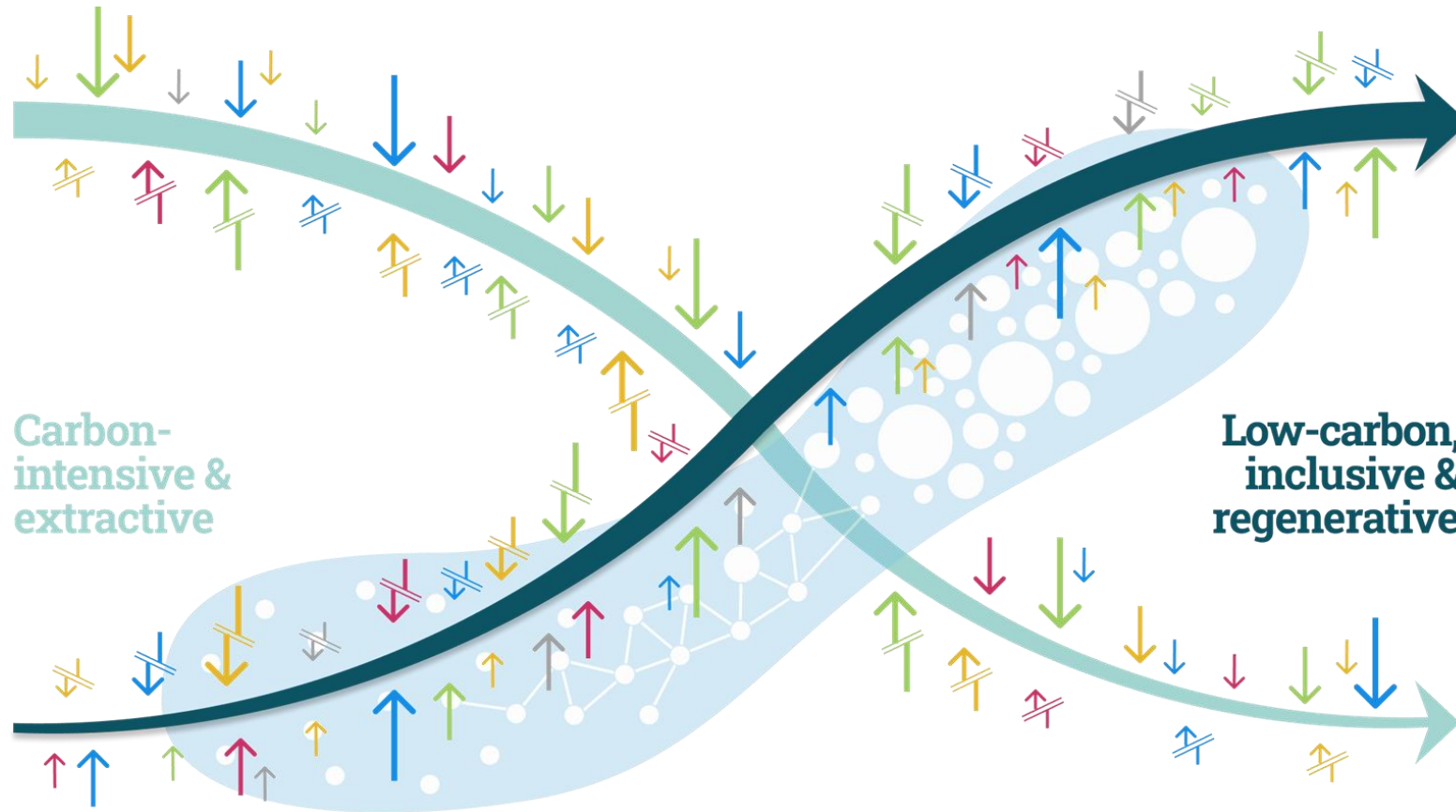
- **In cities**, where systems are interconnected, this shift requires **multiple & deep changes**, with **significant impacts** on how people live, work, and move.
- At the same time, **carbon-intensive practices** are already linked to **negative externalities**, often treated as an unfortunate but necessary cost of development, which tend to burden disadvantaged groups disproportionately.

A just transition is therefore not only a fair and equitable shift to low-carbon, but also a shift to fairer, more inclusive urban systems.





A collective effort: multiple actions across multiple actors



The transition requires action on both sides of the curves:

- ↓ Pressure to **accelerate change**
‡ While **removing the barriers** that keep old structures in place.
- ↑ **Enabling innovation** to grow & spread
‡ While creating the conditions for new models to **emerge & stabilise**.

No single actor or sector can drive all these on their own



Governments



Academia



Businesses



Investors



Civil society



Funded by
the European Union



Addressing structural inequities & reducing vulnerability

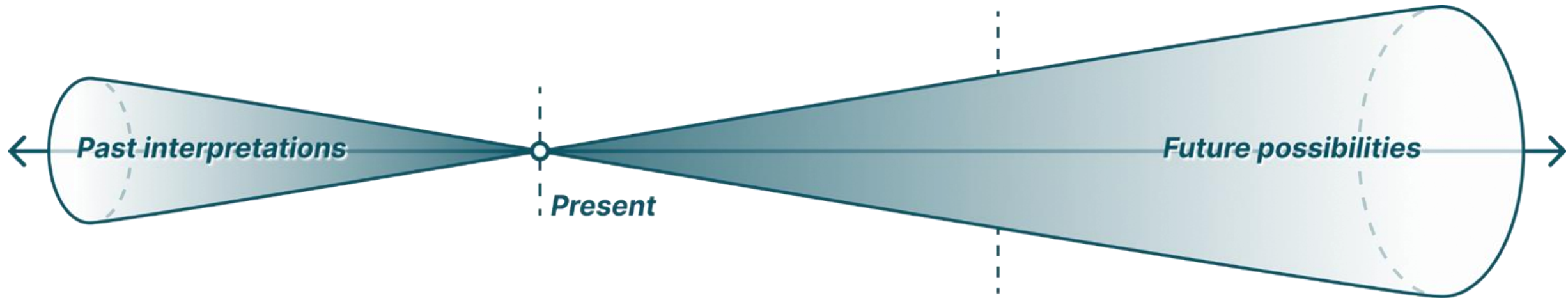
- Historic inequities continue to shape urban vulnerability today
- Leaving less advantaged groups, who are often less responsible for emissions, more exposed & less able to benefit
- If underlying disparities are unaddressed, transition outcomes will remain uneven

Mitigating negative impacts & preventing new inequalities

- Climate change and the transition create gains and burdens that are distributed unevenly across groups
- Without deliberate safeguards, new systems can reproduce or create new inequities
- A just transition requires more than inclusion, it must lead to equitable outcomes

Building long-term adaptive capacity, agency & resilience

- Future conditions are uncertain, risks cannot be fully anticipated or prevented
- At the same time, today's decisions have long-term intergenerational consequences
- A just transition requires building long-term resilience: communities' capacity to adapt, & thrive under changing conditions.



Functional zoning → **Segregation & urban sprawl**
Post-war social housing → **Energy poverty**

Industrial transition → **Job loss in legacy sectors**
Large-scale retrofitting → **Green gentrification**

Climate-induced migration ~
Resource scarcity & competition (e.g. minerals) ~





Four lenses for a just transition



Whose needs and realities are recognised and acted on?

Justice as recognition: Whose lives, needs and lived impacts are acknowledged, counted and made visible in the evidence, goals and narratives we use.

Who participates and can meaningfully shape decisions?

Procedural justice: Who can access the process, be heard and meaningfully influence decisions through fair and transparent decision-making.



How are benefits of the transition shared and burdens shared?

Distributive justice: How gains, risks and trade-offs are shared across groups, places and generations, and by what principle.

How can harms being addressed and prevented from recurring?

Restorative justice: Rectifying past and present harms by addressing structural inequities, and ensuring the new systems do not recreate them.





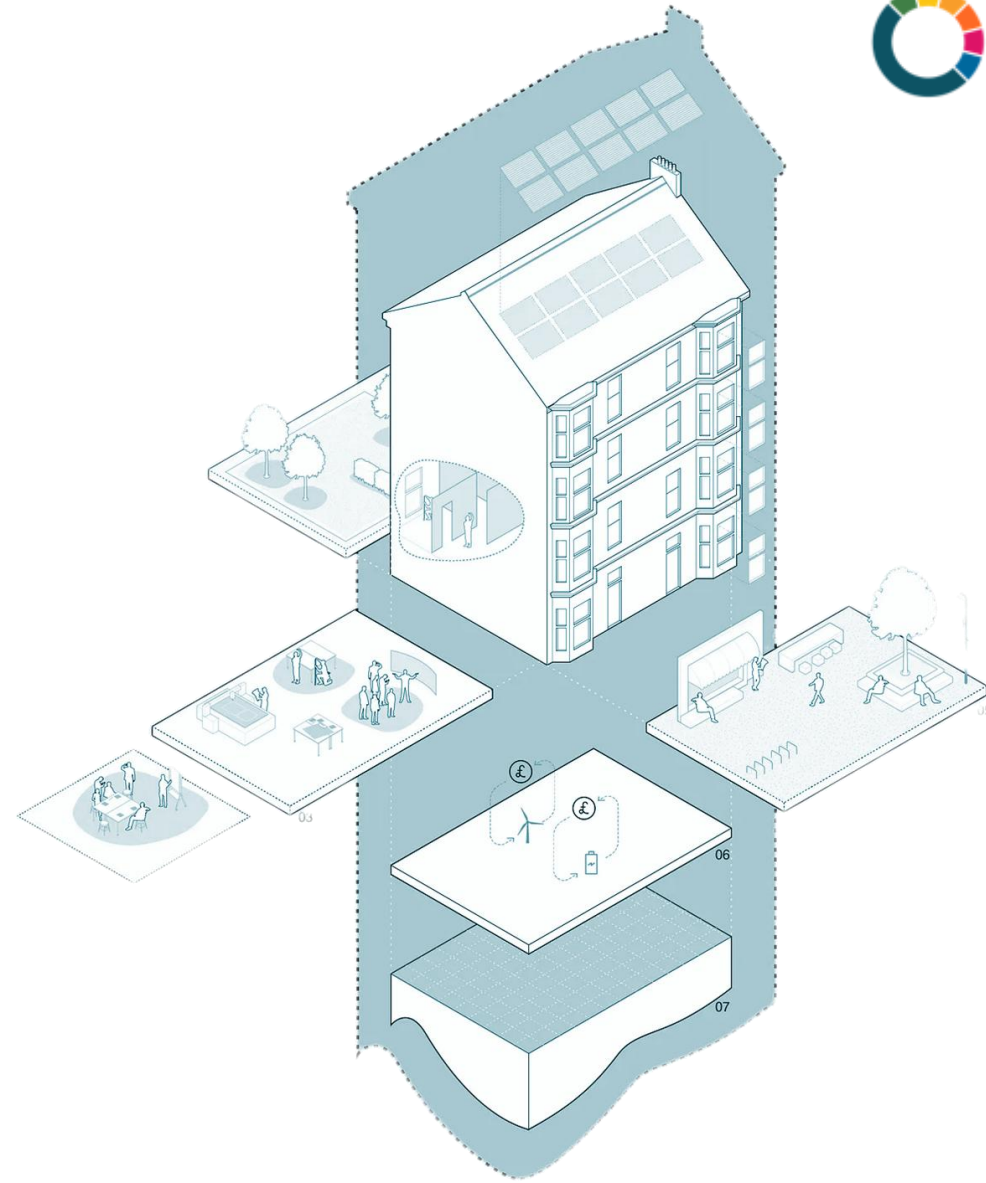
Why the built environment

The just transition challenges become tangible in our built environments.

The built environment is both a major GHG emitter with significant environmental footprint, and it is also where current social inequalities become visible.

Unfortunately, business-as-usual solutions still fail to integrate planetary boundaries and social equality into urban planning, development and policy.

How, by whom and for whom our cities are planned today creates the pathways for our future cities. Decisions for the built environment today impact what is possible tomorrow.





Some types of just transition initiatives



Addressing
systemic
vulnerability &
inequity



Strengthening
agency & self-
sufficiency



Resource
efficiency,
sufficiency and
circularity



Accessibility,
affordability &
inclusivity of
climate solutions



Accountability &
responsibility for
global environmental
and social impacts



Funded by
the European Union



Orchestrating just transition in the built environment: What is necessary?

- Creating shared direction and joint vision for fair future built environment within planetary boundaries
- Practices and structures for continuous learning and impact evaluation
- Concrete joint action



TRANSITION BLOCKS

**Neighbourhood
accelerators**

Tangente

ESS intercooperación



Tangente

ESS intercooperación

Cooperative group

13 entities

170 professionals working

Ecology

Gender and equality

Collective entrepreneurship

Agroecology and food

Community participation

Collaborative housing

Organizational development



Tangente

ESS intercooperación

OUR WORK IN JUST TRANSITION

Develop transformative social innovation projects, carry out training and support processes for initiatives, and provide consulting services for institutions.

Strong links with social movements

In addition to promoting and strengthening Social and Solidarity Economy initiatives.





CERTAINTY

In the near future, we will live with less energy, fewer resources and in more ecologically hostile environments.

HYPOTHESIS

By working on a block-by-block basis, we can save money, reduce impacts and improve quality of life.





**BLOQUES EN
TRANSICIÓN**



CHALLENGES

Recovering the collective and community spirit as the main factor for resilience.

Accompanying and democratising architectural, technological and lifestyle changes.

Anticipating and accelerating change.

Strengthening the agenda for a just transition in the consolidated city and its suburbs.

Supporting and reinforcing the social fabric.

Promoting cooperative dynamics and the social and solidarity economy.



FAIR TRANSITION OFFICE

Dozens of awareness-raising activities and community actions, with more than 600 participants:

- Workshops on electricity bills
- Sessions on energy saving and efficiency measures
- Community Actions

Support for blocks with energy and renovation issues, to democratise access to public aid in vulnerable neighbourhoods like Vallecas

Visits to Good Practices

Strengthening and greening the neighbourhood association

Supporting social economy and cooperative projects

There is no similar measure in public policy in Madrid

VALLECAS EN RUTA HACIA LA TRANSICIÓN ENERGÉTICA

Visita a proyectos vecinales inspiradores

Domingo 19 de noviembre 2023

Des y comida gratuitas. Salida: 11:30h | Regreso: 18h

Lugar de encuentro: AV Palomeras Bajas, 36º de Felipe Diego, 31, posterior, 28018, Madrid
Cercanías: El Pozo



Organiza:

www.vallecas.org

Organiza:

Tangente

Organiza:

AVM



Energía vallecana para una transición justa

SOBERANÍA, SOSTENIBILIDAD Y COMUNIDAD

**JUEVES 4
MAYO
DE 18 A 20H**

EXPERIENCIA INSPIRADORA

La Pablo Renovable (Rivas Vaciamadrid)

- Enrique Martín
- Begoña Pineda

MICROPONENCIAS Y TALLERES PARA AVANZAR
EN VALLECAS

Autoconsumo colectivo

- Laura Feijóo (ECCOO)

Dinamización vecinal y transición energética

- Manuela Navarro (FRAVM)

Rehabilitación energética de edificios

- REVIBE

Organiza:

Tangente

Organiza:

AVM

FRAVM

REVIBE

Organiza:

BLOQUES EN TRANSICIÓN

BLOQUES EN TRANSICIÓN ACTIVIDADES MAYO 2023



OFICINA DE TRANSICIÓN
TEL: 902 041
V.º de Felipe Diego, 31 posterior
Madrid (28018)
HORARIO OFICINA:
Martes y jueves (17 a 20h)

¿MÁS INFORMACIÓN?
oficina@transicionenergética.org

TALLER AUTOCONSUMO DE RENOVABLES EN COMUNIDADES DE PROPIETARIAS Y PROPIETARIOS
¿Cuáles y cómo funciona el autoconsumo colectivo? ¿Por qué es una oportunidad que no debemos perder? ¿Qué inversiones son necesarias? ¿Cuáles son los plazos de amortización alternativos? Dirigido a bloques. (Madrid) (sacón).

**MARTES
16
18:00h**

**JUEVES
25
18:00h**

TALLER MAPEO PARTICIPATIVO DE REFUGIOS CLIMÁTICOS
¿Qué lugares en el barrio son nuestros aliados frente a las altas temperaturas? ¿Dónde los encontramos? Dirigido a público general. Dinamizar: Colectivos-LPA.

TALLER REVERDECER BLOQUES Y VIVIENDAS

¿Cómo mejora nuestra vida la presencia de plantas? ¿Estrategias eficaces para reverdecer nuestros bloques? ¿Cómo aprovechar espacios reducidos para la jardinería? ¿Cultivos en macetohuertas? Regalo de una planta para el refuerzo de nuestra comunidad. Dirigido a bloques. Dinamizar: Desembarco.

**MARTES
30
18:00h**

<https://tangente.es/opinion/que-sentimos-y-que-queremos>

SAFARI TERMOGRÁFICO

EN LA SEMANA DE LUCHA CONTRA LA POBREZA ENERGÉTICA SALIMOS A FOTOGRAFIAR LOS EDIFICIOS DE NUESTRO BARRIO PARA COMPROBAR POR DÓNDE SE NOS ESCAPAN LOS EUROS Y LA ENERGÍA.



AV PALOMERAS BAJAS

(Trº Felipe Diego, 31, posterior, 28018, Madrid)

22 FEBRERO

19 H

Organiza:

Tangente

Organiza:

AVM

Organiza:

REVIBE

Organiza:

BLOQUES EN TRANSICIÓN

FAIR TRANSITION OFFICE



CURSO DE ACTIVISMO ENERGÉTICO



¡ENCIENDE LA TRANSFORMACIÓN DE TU BARRIO!

DEL 30 DE ENERO AL
5 DE MARZO 2024

¡INSCRÍBETE YA!

TODOS LOS MARTES
DE 18 A 20:30H
EN AV PALOMERAS BAJAS
(Trº de Felipe de Diego, 31, posterior,
28018, Madrid) Cercanías: El Pozo



Información:

gente.coop/bloquesentransicion | oficinadetransicion@tongente.coop

Organiza:



Colabora:



FAIR TRANSITION OFFICE



CATALOGUE AND DEMOSTRATIVE BLOCKS



Demostrative Blocks

Catalogue of initiatives:

- Energy, Mobility, Care, Food, Renaturalisation, Common resources

Support and small investments

Measuring and monitoring changes...

Neighbourhood learning communities

3 comprehensive pilot projects + several partial projects





COLES EN TRANSICIÓN

CLIMATE ADAPTATION PLANS IN PUBLIC EDUCATIONAL CENTRES

¿CÓMO REFRIGERAMOS Y REVERDECEMOS NUESTRO COLE?

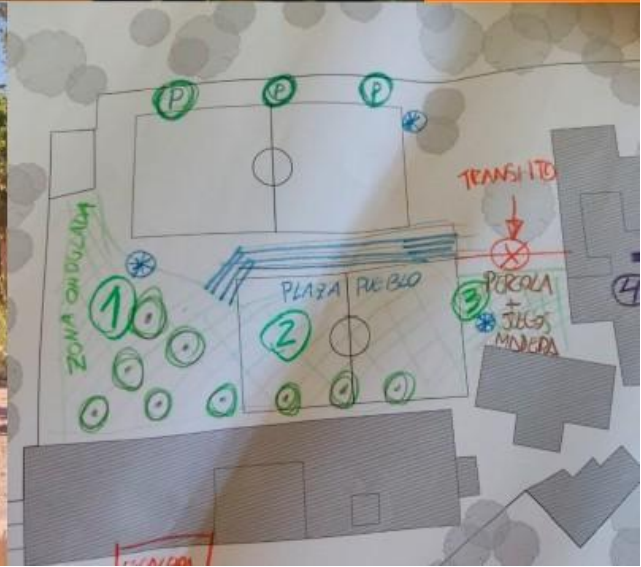
28 OCTUBRE (9:00 H)

Taller sobre renaturalización y refrigeración de
nuestro patio

4 NOVIEMBRE (9:00 H)

Taller de diseño participativo para transformar
nuestro patio

*¡Ven a las dos actividades que
organizamos desde el cole e infórmate!*



COLES EN TRANSICIÓN

CLIMATE ADAPTATION PLANS IN PUBLIC EDUCATIONAL CENTRES

Participatory process with educational communities:

- Proposal for bioclimatic renovation of buildings
- Installation of renewable energy sources
- Renaturalization of school playgrounds



COLES EN TRANSICIÓN

CLIMATE ADAPTATION PLANS IN PUBLIC EDUCATIONAL CENTRES



COLES EN TRANSICIÓN

CLIMATE ADAPTATION PLANS IN PUBLIC EDUCATIONAL CENTRES

PROPUESTA PATIO



TANGIBLES AND INTANGIBLE CHANGES

3

Demostrative Blocks

214 Houses

3 Solar panel installations approved, 1 Renovation process initiated, 1 Group for the prevention of unwanted loneliness, 1 Self-built pergola for heat waves in common areas, 1 Optimisation of bicycle storage rooms, 2 Agroecological consumer groups, 5 Neighbourhood exchange corners

Reactivation of cooperative dynamics, inter-block relations and increased social resilience

50

Advised and supported housing blocks

6

Climate adaptation plans in public educational centres

1

Energy community in progress



¡GRACIAS!

Just Transition approach

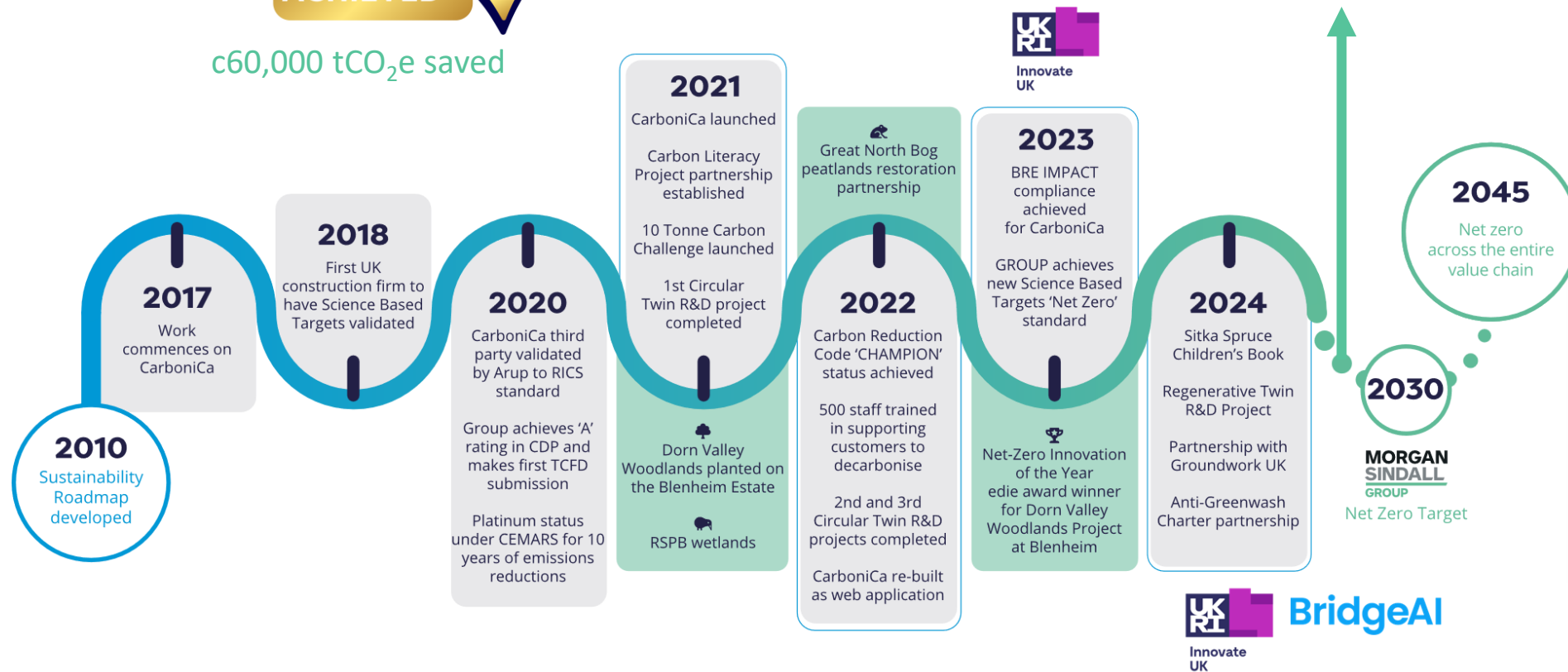
**MORGAN
SINDALL**
CONSTRUCTION



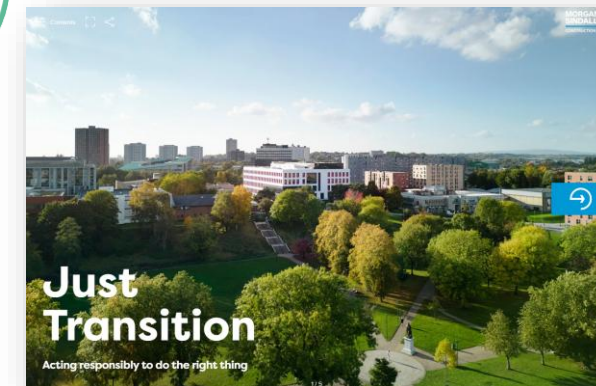
Our carbon journey



c60,000 tCO₂e saved



As the built environment and related sectors transition to a low carbon economy, public sector authorities are starting to consider how to mitigate the negative effects of that transition on vulnerable communities, businesses and individuals.

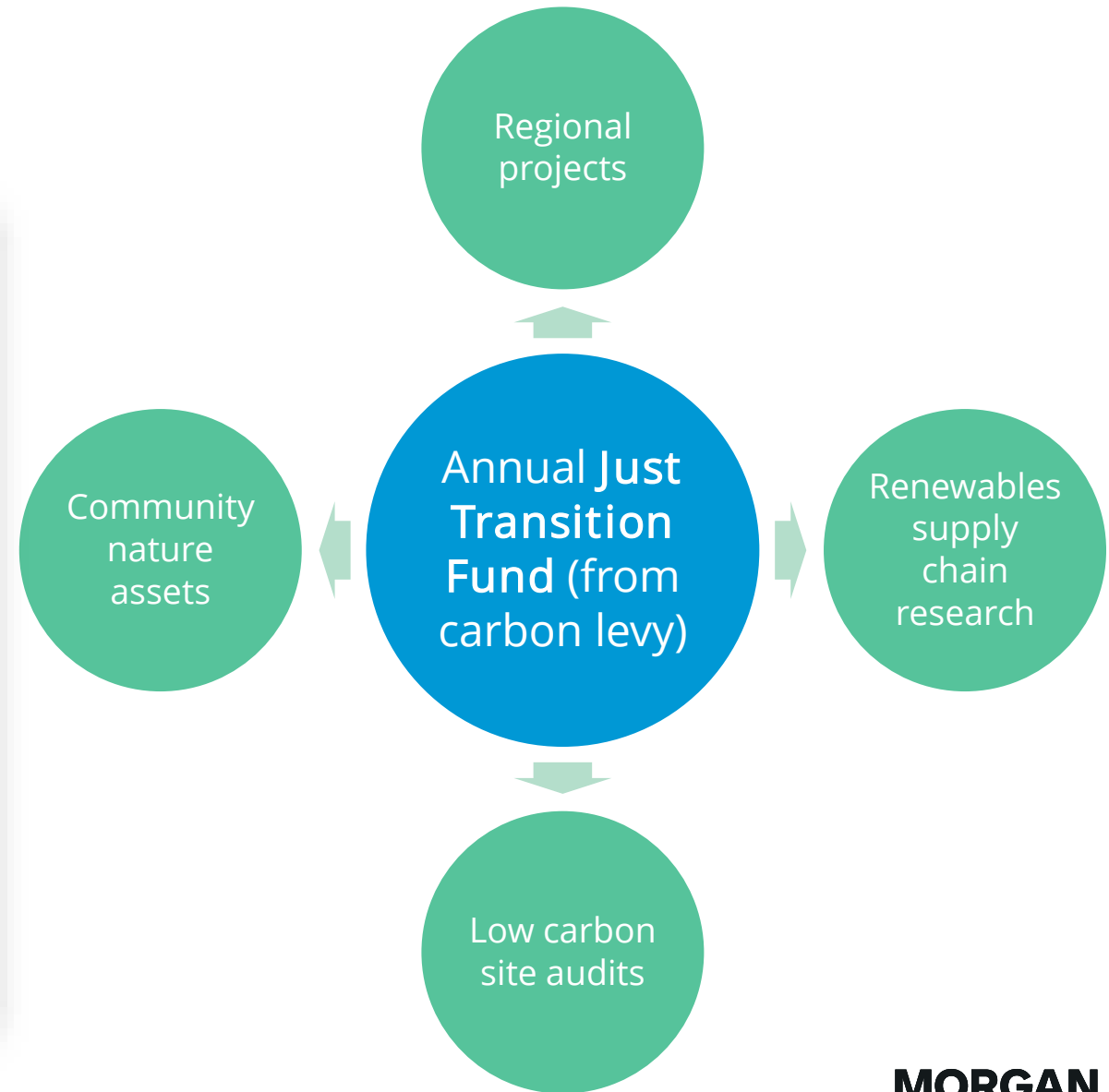
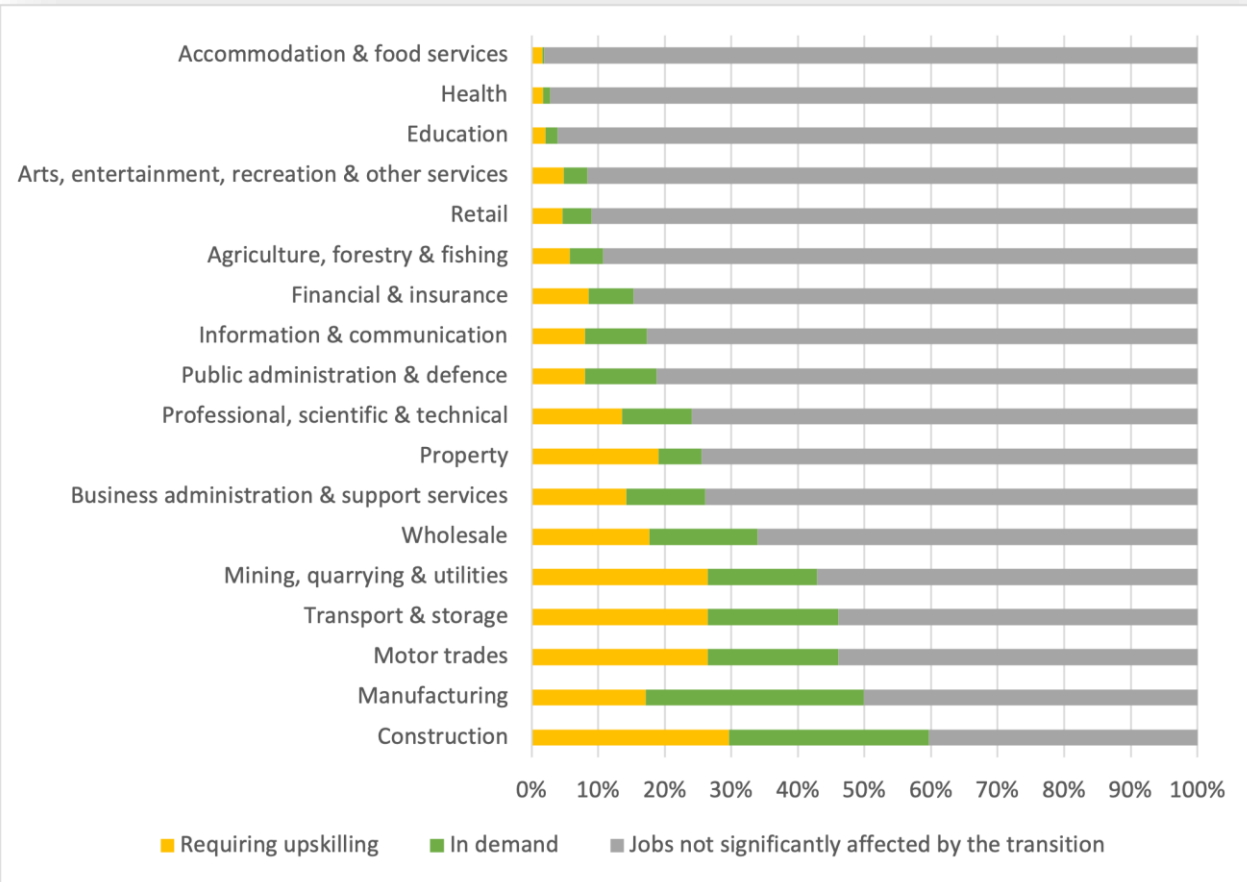


*1 Scope 1, 2 and operational scope 3, reduced by 60% against 2020 baseline, with the remaining emissions covered with carbon removals from UK natural capital investments

*2 Full scope 3 reduced by 90% against 2020 baseline, with the remaining emissions covered by carbon removals to be determined in line with Science Based Targets Initiative

**MORGAN
SINDALL**
CONSTRUCTION

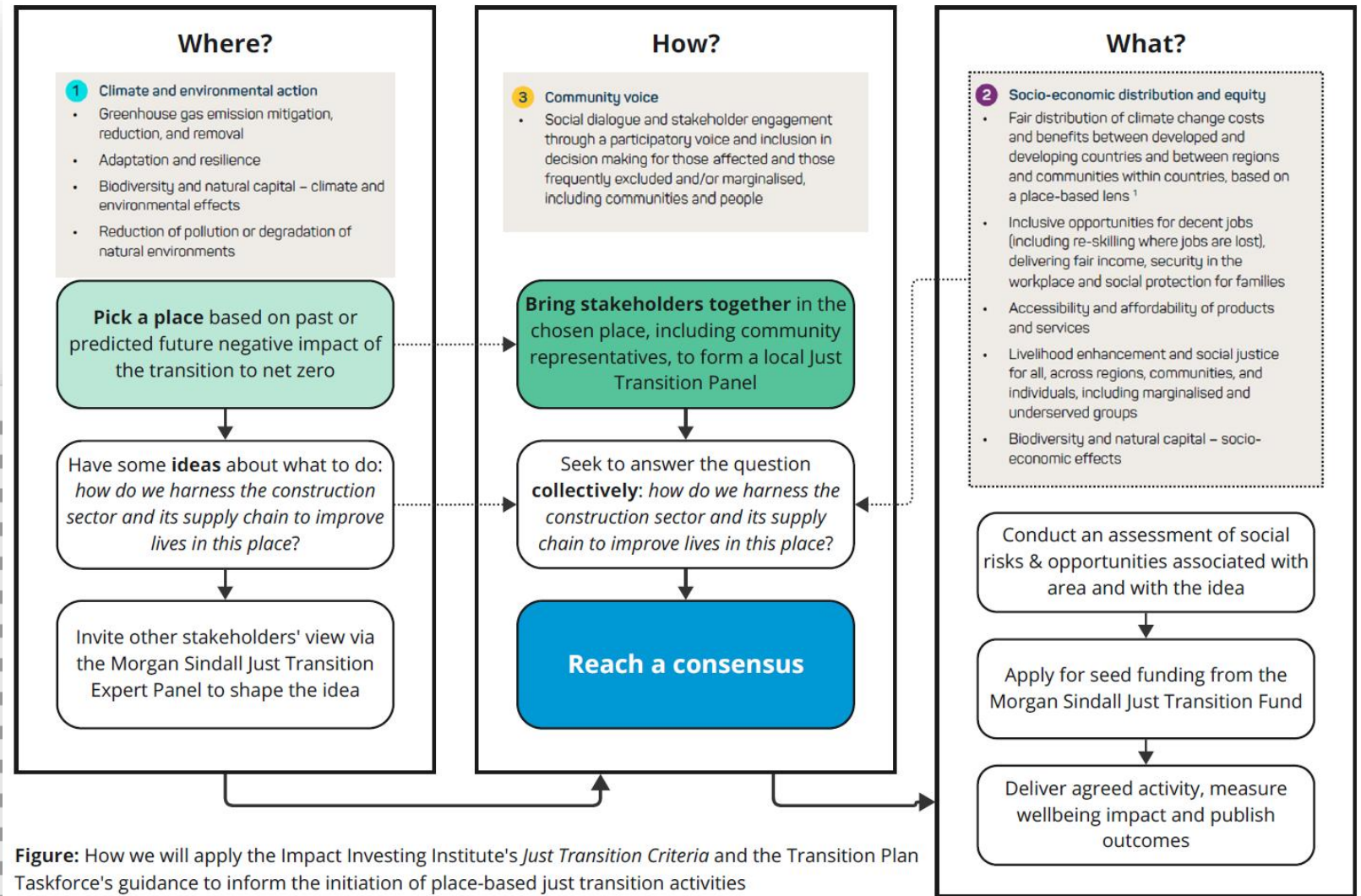
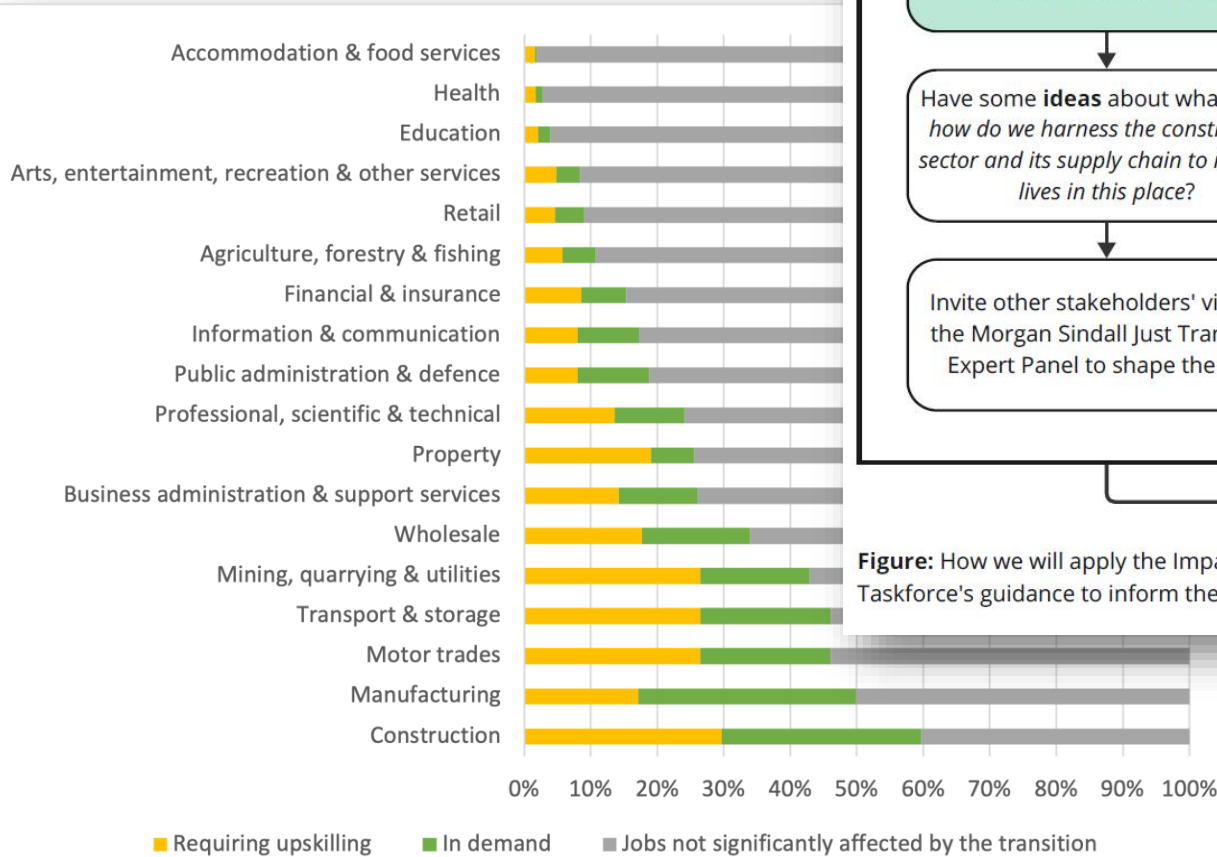
Why should we care?



Morgan Sindall Construction

Regional projects

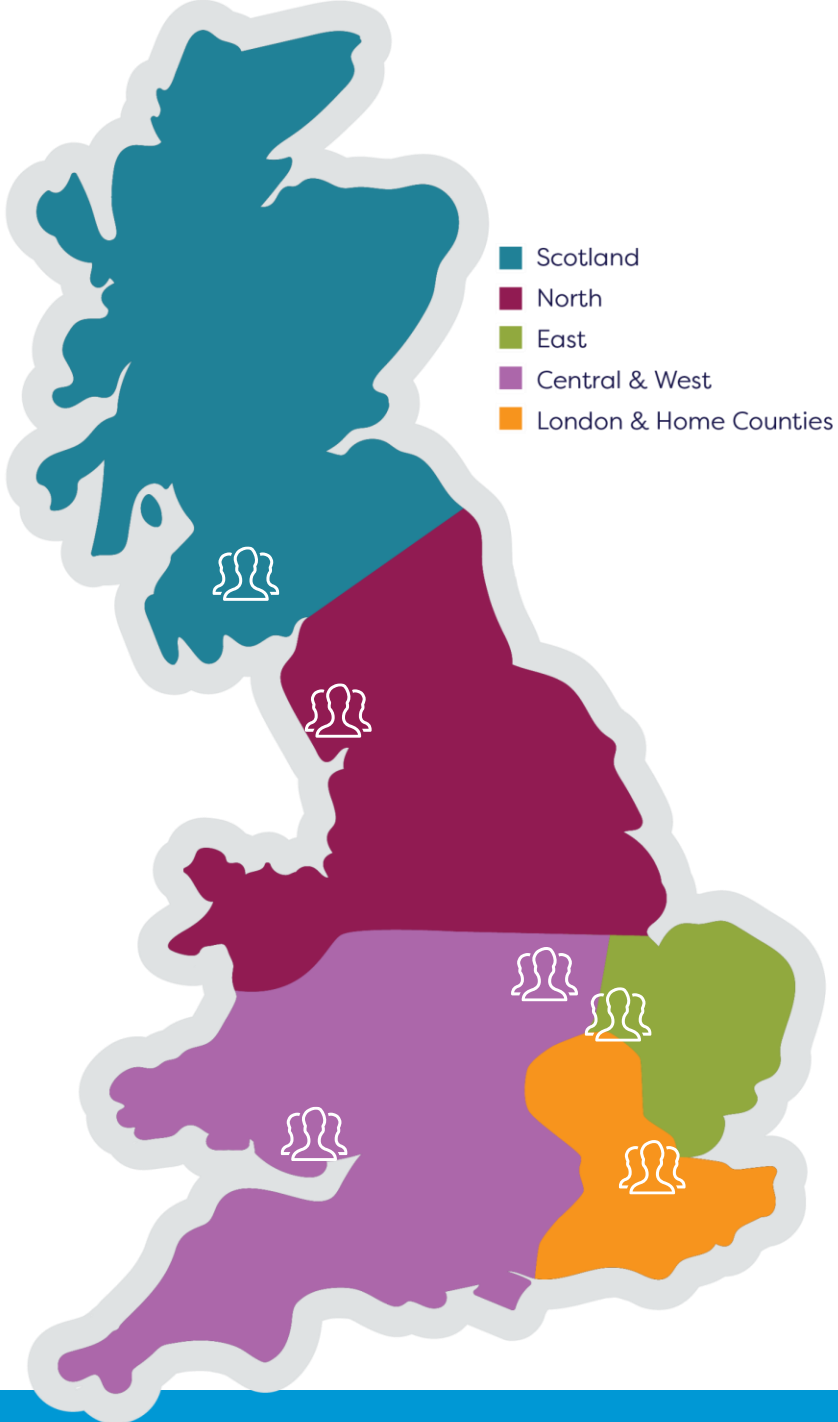
connecting & **organising** stakeholders in a local area to co-create and deliver Just Transition activities



Key criteria

- Building trust and relationships
- Staying in the place for the long term

2025 projects



Regional Projects

Connecting & organising stakeholders in a local area to co-create and deliver Just Transition activities

Dumfries & Galloway: Financial literacy to break cycles of deprivation

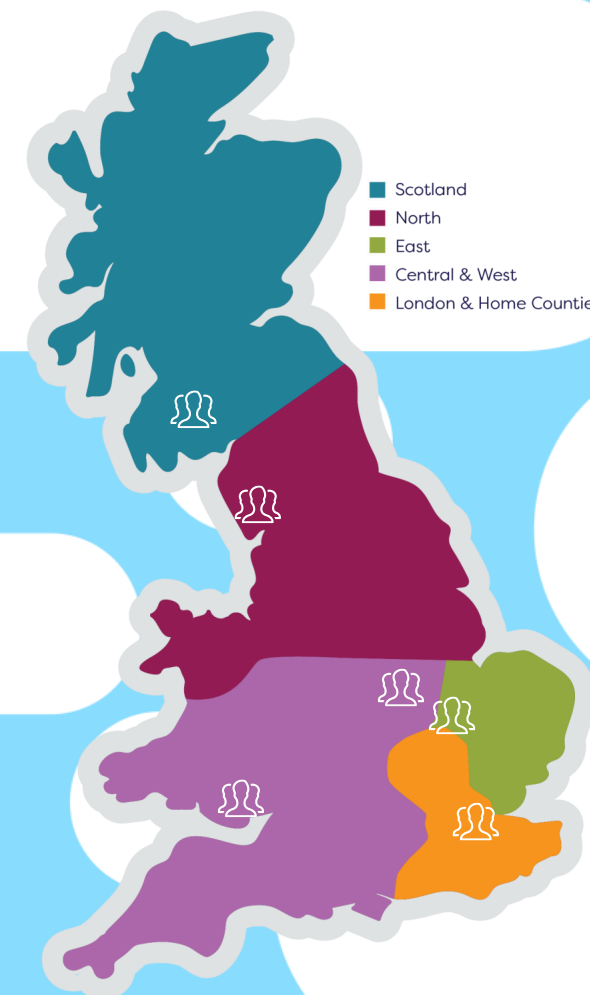
Cleator Moor: Creating a long-term community investment model in a left behind post-industrial town

Mansfield: Creating a local retrofit workforce by improving community assets

Peterborough: Supporting economically inactive young women to re-imagine their future

Crystal Palace: Creating real job opportunities in retrofit and green skills for disadvantaged local people

Port Talbot: Empowering children in an area of abrupt de-industrialisation to re-imagine their future



NZC CoP webinar on Just Transition

“Just transitions in Barcelona: Public Space Transformation and Housing Strategies”

13/11/2025

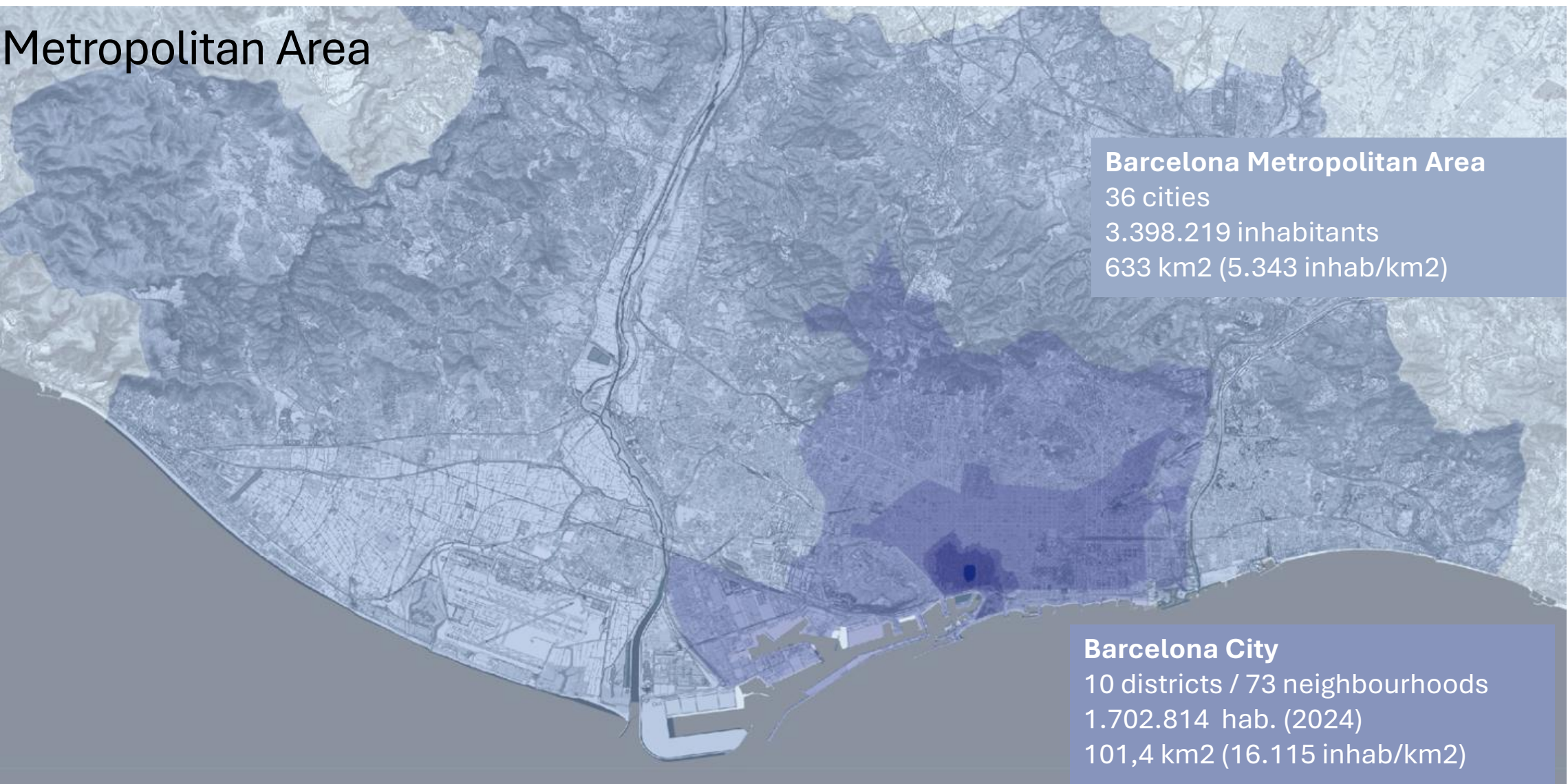
Neda Kostandinovic

International relations, Office of the Chief Architect
Barcelona City





Metropolitan Area



Barcelona Metropolitan Area

36 cities
3.398.219 inhabitants
633 km2 (5.343 inhab/km2)

Barcelona City

10 districts / 73 neighbourhoods
1.702.814 hab. (2024)
101,4 km2 (16.115 inhab/km2)



II

XVI

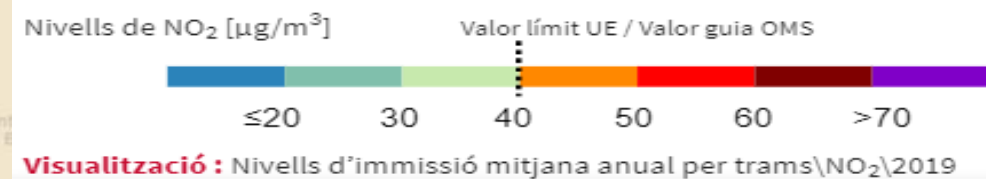
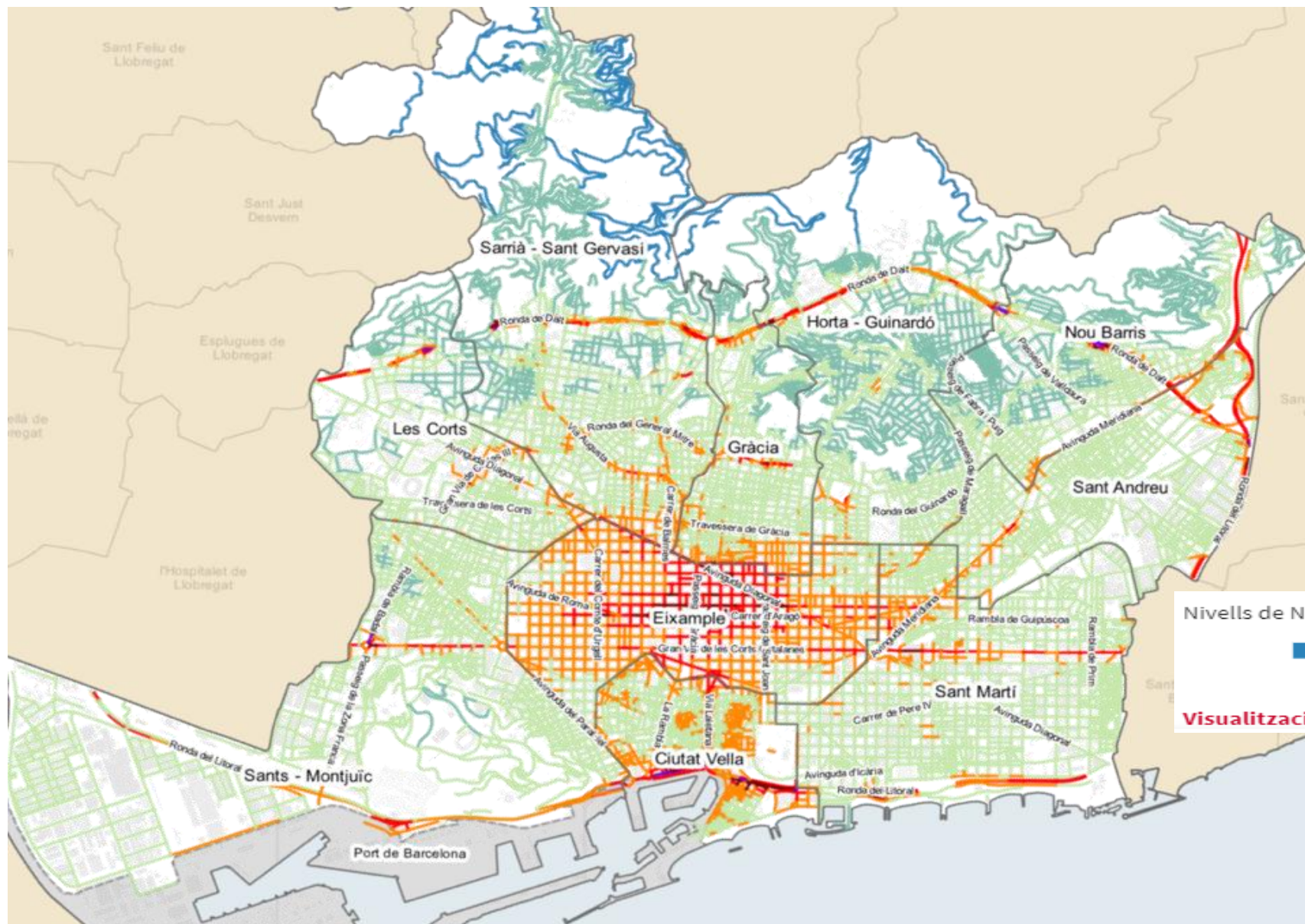
XVII

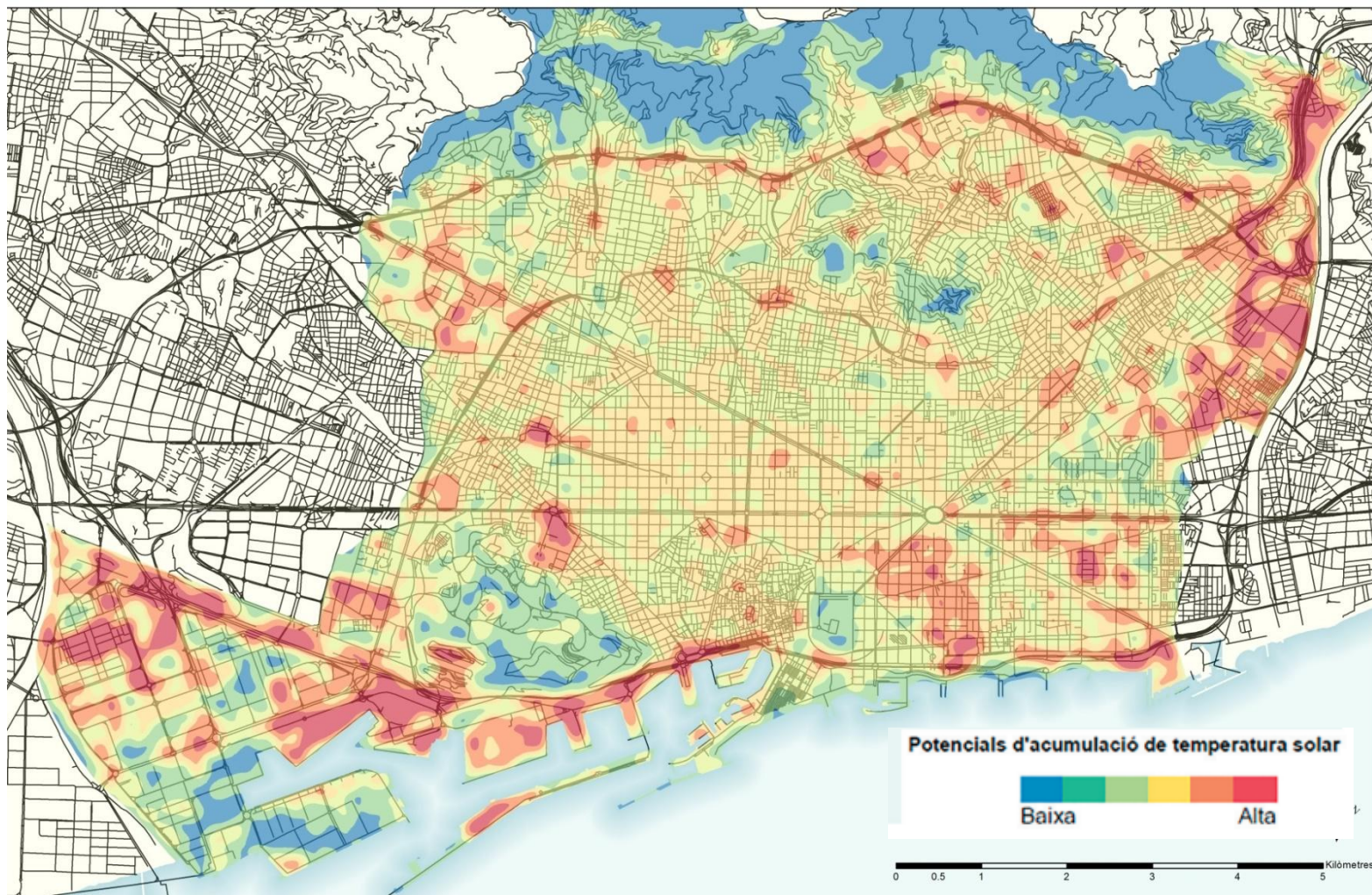
XIX

XX

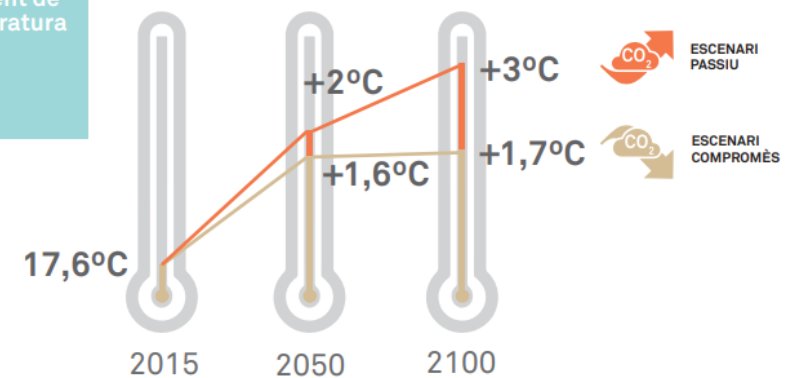


Public space as a tool for reducing inequalities

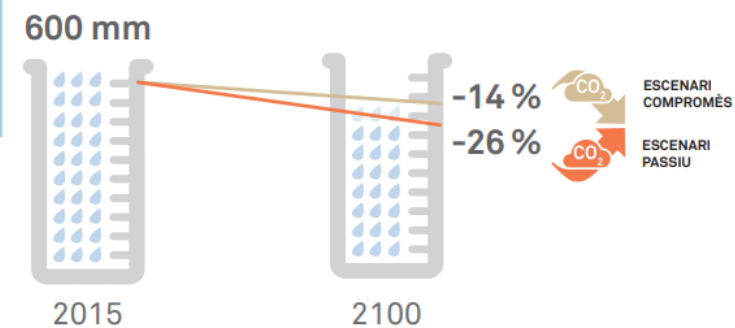




Augment de temperatura



Disminució de precipitació



ESTRATÈGIA SOBRE
CANVI DEMOGRÀFIC
I ENVELLIMENT

2018—2030

L'ANY 2030 GAIREBÉ UN DE CADA TRES HABITANTS DE BARCELONA TINDRÀ 60 ANYS O MÉS.

Actualment, dues de cada tres
persones de 80 anys i més són dones.



Més de la meitat de les persones
d'entre 60 i 79 anys disposen
d'estudis obligatoris o superiors.



A més, un terç de les persones
adultes joves són de nacionalitat
estrangera.



I a partir dels 80 anys augmenten
exponencialment les necessitats
de cura de les persones grans.



GENTRIFICATION

LONELINESS

MULTICULTURALITY

INEQUALITIES

AGING

HOUSING



Ajuntament de
Barcelona



**REDEFINING URBAN
QUALITY**

**ADAPTING THE
EXISTING CITY**





Barcelona for Climate

PLA CLIMA

CLIMATE CHANGE IN BARCELONA

PROJECTS AND ACTIONS, WHAT DO WE DO?

AND WHAT CAN I DO?

NEWS AND CALENDAR



6 lines of action



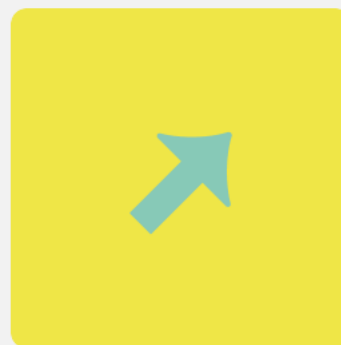
Let's change for the climate plan

Per promoure la cultura de la sostenibilitat entre la ciutadania i predicar amb l'exemple



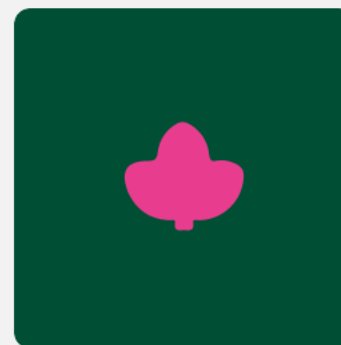
Heat Plan

Per adaptar Barcelona a les altes temperatures



Mobility Plan

Per fomentar el transport públic, la mobilitat elèctrica i en bicicleta



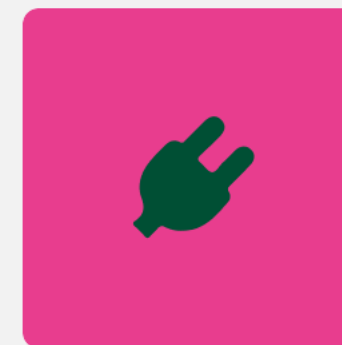
Resilience Plan

Per preparar la ciutat per a futures sequeres, inundacions o incendis



Neighbourhood Climate Plan

Per garantir la justícia climàtica i no deixar a ningú enrere



Energy Transition Plan

Per potenciar l'energia renovable i eficient, i reduir el consum energètic



HEAT PLAN

Barcelona, a city vulnerable to heat

**21%**

of the population of Barcelona is over 65

**20%**

The Mediterranean basin is heating up 20% more quickly than the global average

**22.7%**

of the population of Barcelona is in a situation of energy poverty

**1.8°C**

increase in the average temperature in Barcelona compared to the pre-industrial age

**300 deaths**

In 2023, the heat was calculated to have caused 300 deaths

**17,000 inhab/km²**

The city of Barcelona is one of the densest in the world

**+3°C**

Urban heat island effect: the average temperature in Barcelona is 3°C higher than outside the city, with maximum differences of 7-8°C

HEAT PLAN

Climate change does not effect everyone equally

- **Individual factors:** age, gender and economic position
- **Temporal factors:** physiological adaptation, change of habits, structural improvements
- **Territorial factors:** physical, urban, social

Relationship between heat and mortality in Barcelona - 2024

Heat thresholds in Barcelona in 2024

Very intense heat
> 36°C

Intense heat
34 - 36°C

Moderate heat
25 - 34°C



Hot days in 2024

2%
Intense and very intense heat

98%
Moderate heat

240 Deaths attributable to heat in 2024

What was the temperature that day?

77%
Moderate heat

23%
Intense and very intense heat

Were they men or women?

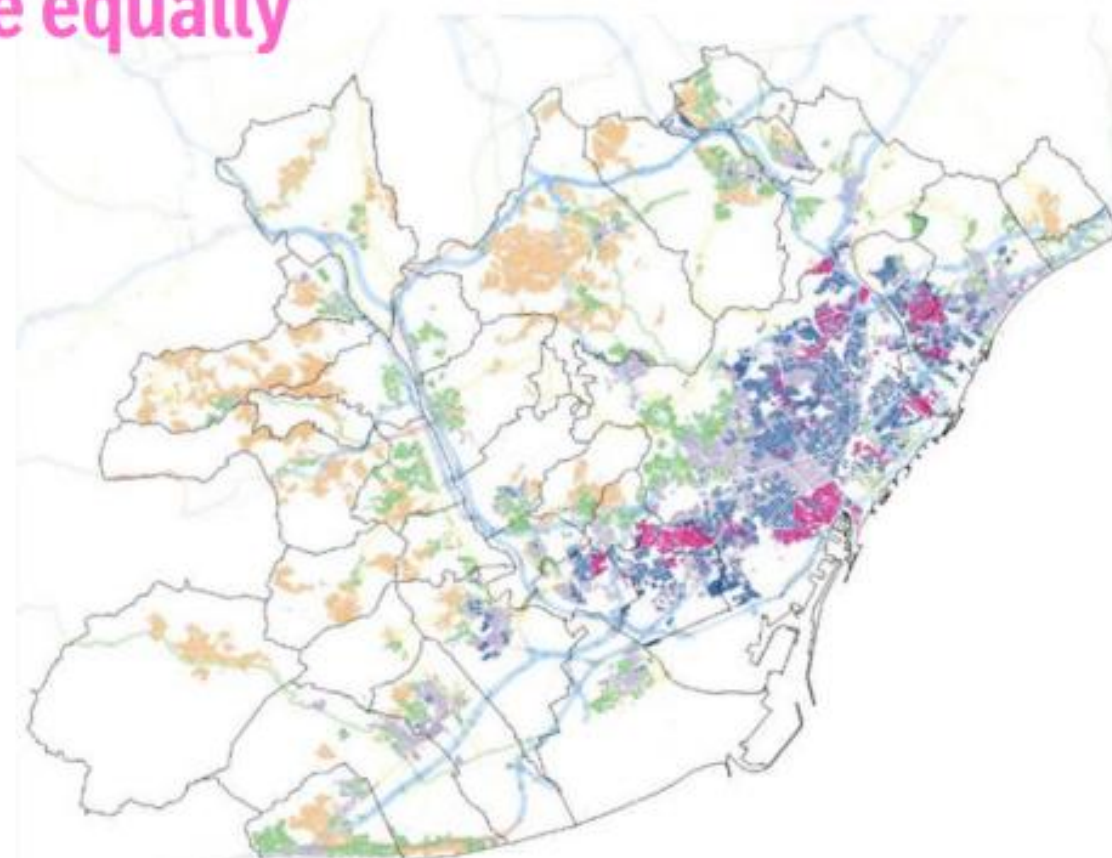
79%
Women

21%
Men

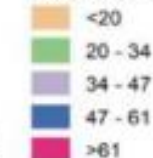
How old were they?

76%
≥ 75 years old

24%
< 75 years old



Índex de Vulnerabilitat al Canvi Climàtic (IVAC)



What are climate shelters?

They are spaces to protect from excessive **heat or cold**, especially for people that do not have homes adapted to thermal comfort.

They are spaces that keep his **usual use**.

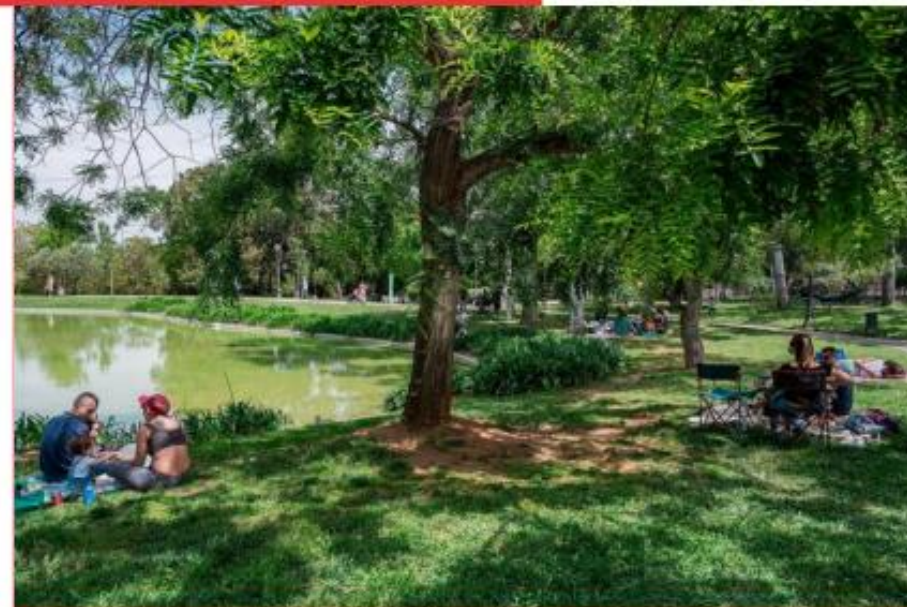
They can be **indoor** spaces, like libraries, civic centres or museums. Minimum space of **50m²**.

They can be **outdoor** spaces, like parks or inside blocks of buildings (only during the summer). Minimum space of **0,5 Has**.

Novelty 2025: **micro-shelters** with **less than 50m²**.

All **are free except the municipal swimming pools**, that have fixed public prices and discounts for vulnerable people.

They can be **public or private**.



Outdoor climate shelter in the Parc de la Ciutadella. Source: AJBCN



Climate shelter at the municipal swimming pools Bernat Picornell. Author: Paola of Grenet

What are climate shelters?

Preferably, they need to have good **accessibility**, **chairs** or banks to seat, **toilets** and availability of drinking water.

In indoor spaces, it is recommended to keep a temperature of **26°C** during **summer** and of **21°C** during **winter**.

They are recommended for **vulnerable people** to heat or cold, like babies, elders or people with chronic diseases, whenever they do not require medical attention.

Some climate shelters **can close on weekends or on August**. Opening hours can be freely checked at barcelona.cat/refugisclimatics or dialing the free phone number 010.



Climate micro-shelter in Pharmacy Torres



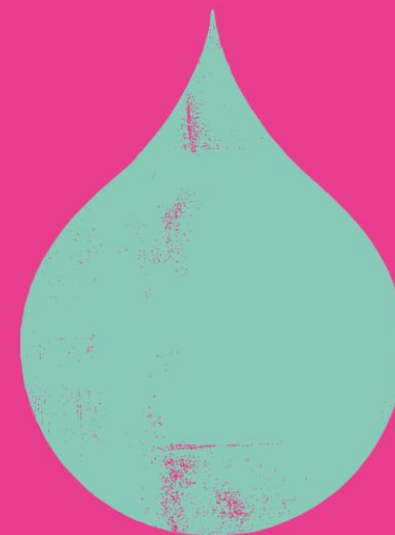
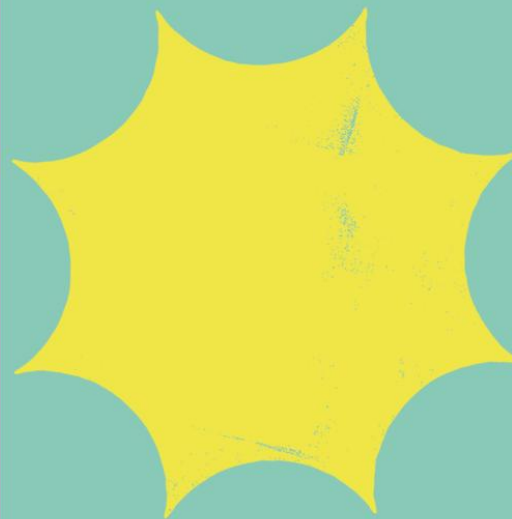
Climate micro-shelter in Bookshop Alibri



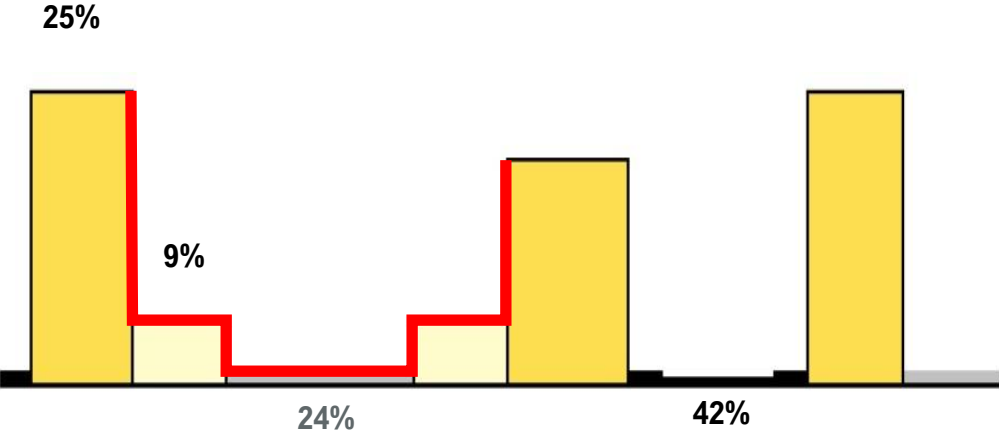
**Proximity and
Interior Spaces
Program**





PLA CLIMA

**Programa
d'Espais
de Proximitat
i Interiors**

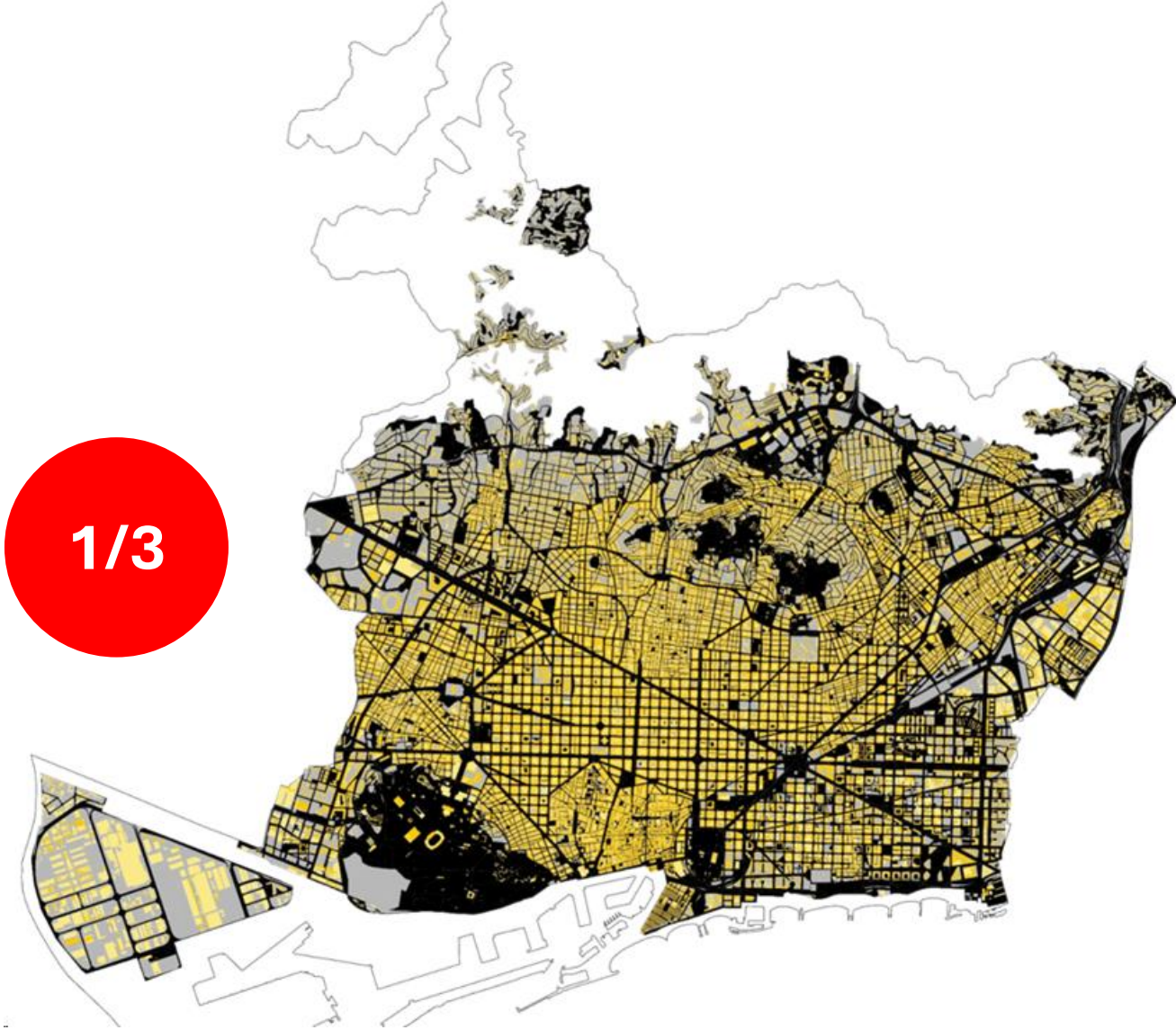


The potencial of the urban fabric



-  **BUIT:** 42% / 3.172,1 ha
-  **BUIT dins illa:** 24% / 1.798,5 ha
-  **PLE en 1 planta:** 9% / 653,1 ha
-  **PLE 2 o més plantes:** 25% / 1.852,3 ha

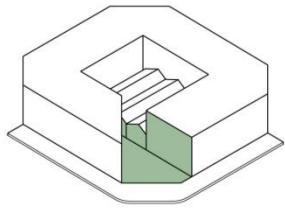
1/3



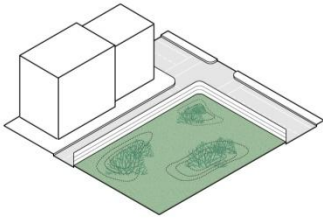


Proximity and Interior Spaces Program

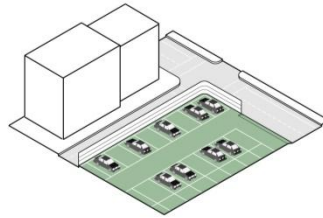
The city has a potential of about **100 ha** of qualified green land pending development.



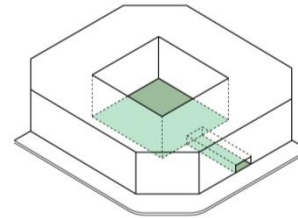
Cantonades



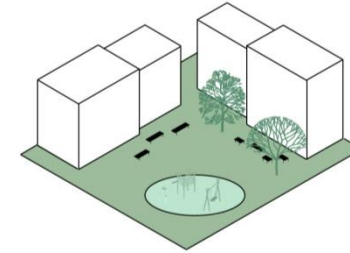
Solars no urbanitzats



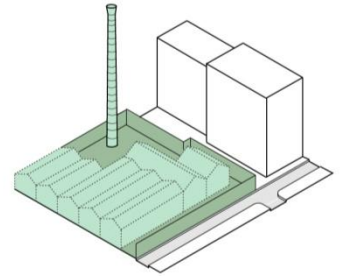
Espais amb usos provisionals



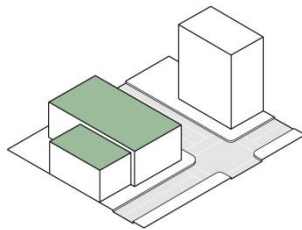
Interiors d'illa



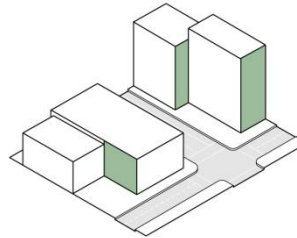
Places



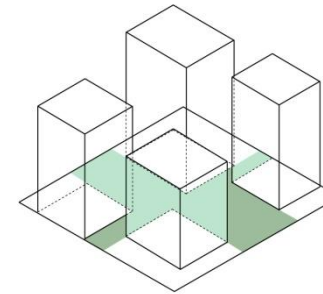
Espais abandonats



Cobertes



Mitgeres



Espais intersticials

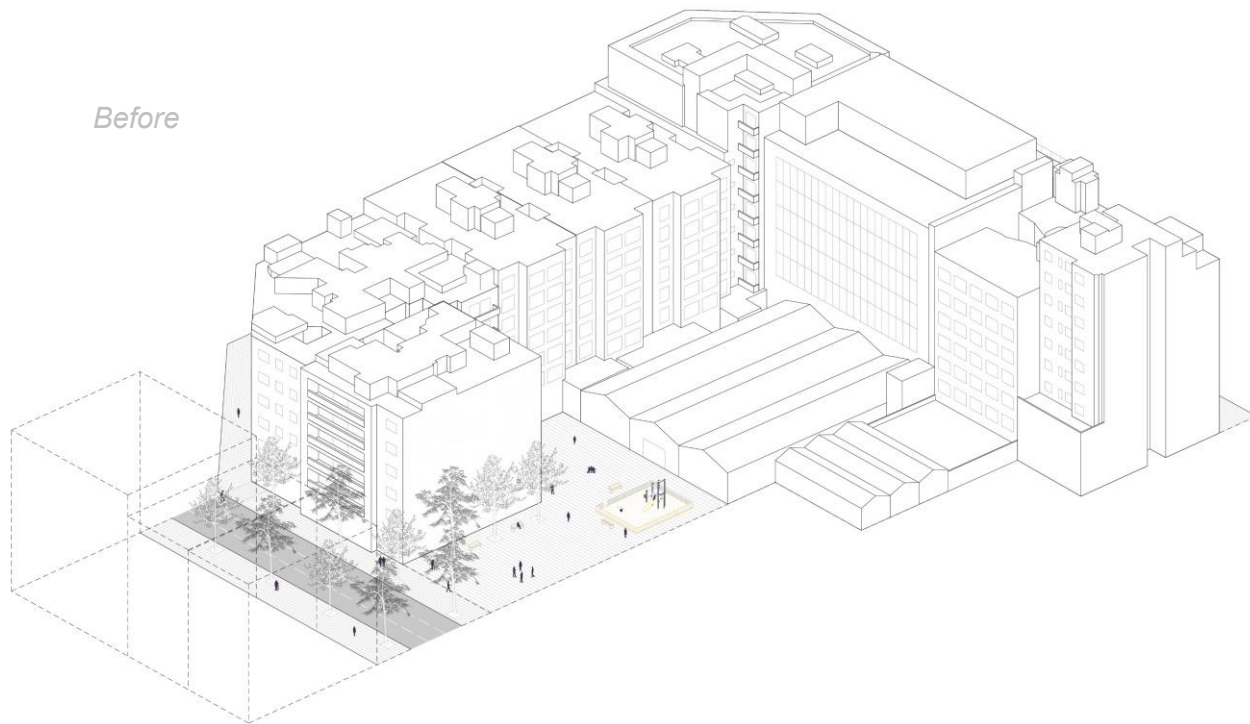
Spaces without category, the leftovers such as **block interiors, spaces between blocks, undeveloped areas, courtyards, corners, blind walls, roofs, plots...** distributed throughout the city.



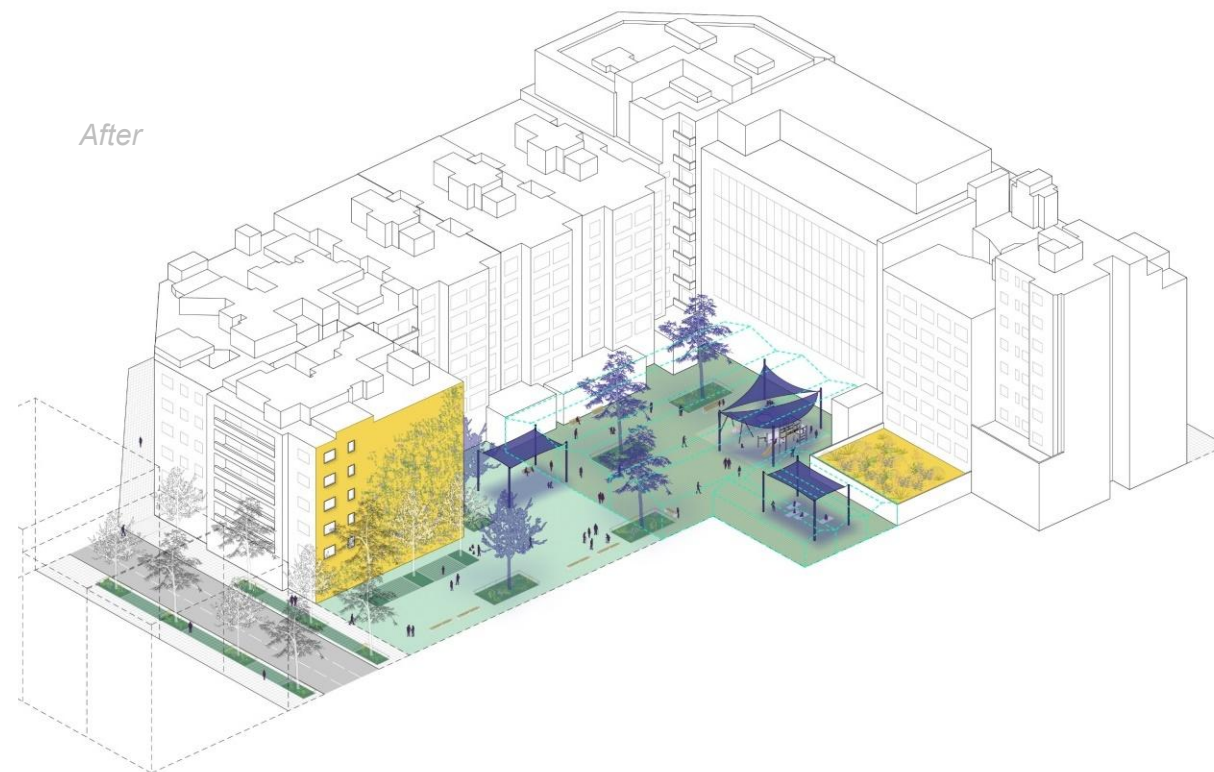
Proximity and Interior Spaces Program

Block interior

Before



After



Space improvement Program

Shades Program

Blind walls and
Roofs Program



Improvement
and Repair



Increase
in soil



Permeabilisation





Proximity and Interior Spaces Program

Planol Qualificació



Fotografies



Parcel·lari



Ortofoto

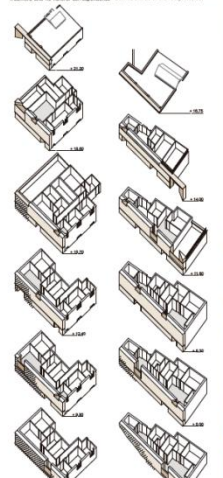
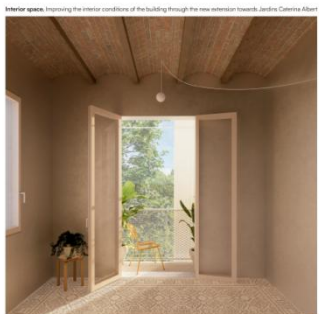
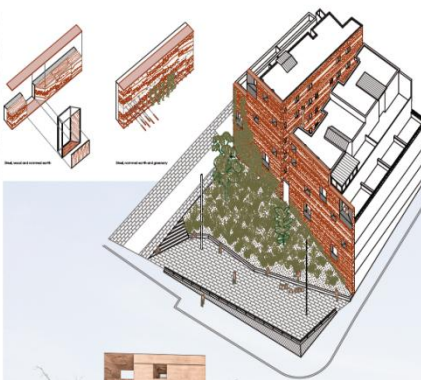
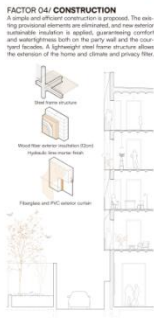
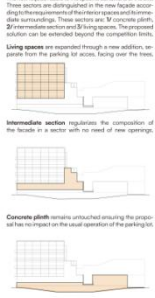
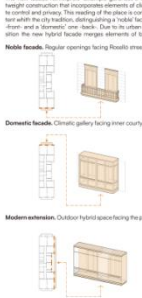
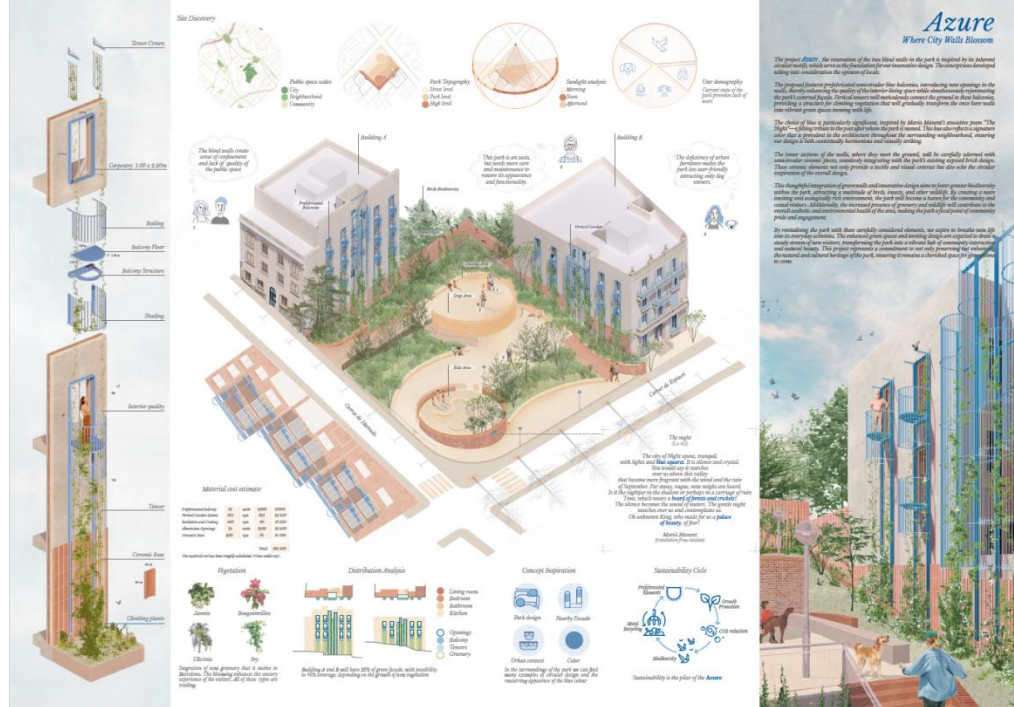




Proximity and Interior Spaces Program

Blind walls and Roofs Program

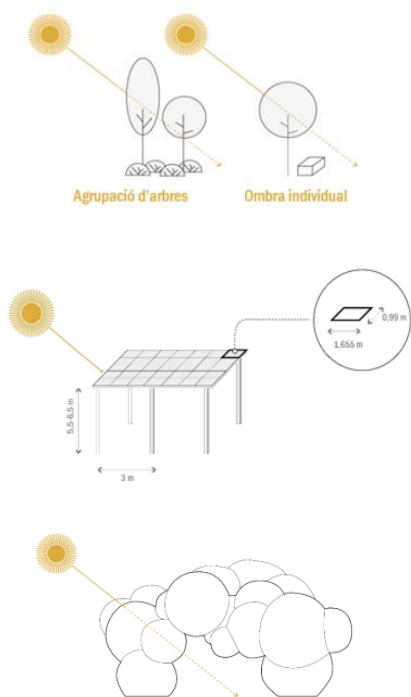






Shades Program

Shading solutions



1. Tree planting

2. Fixed system + FV

3. Seasonal system

+ PRIORITY

- PRIORITY





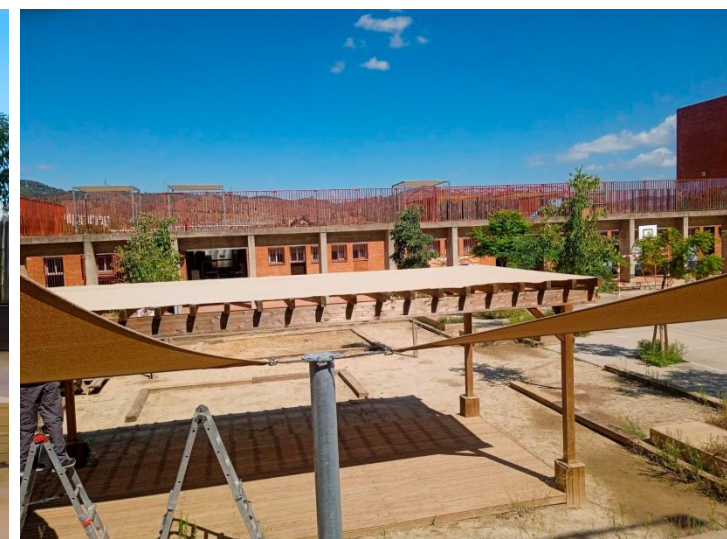
Shades Program

Children's play area





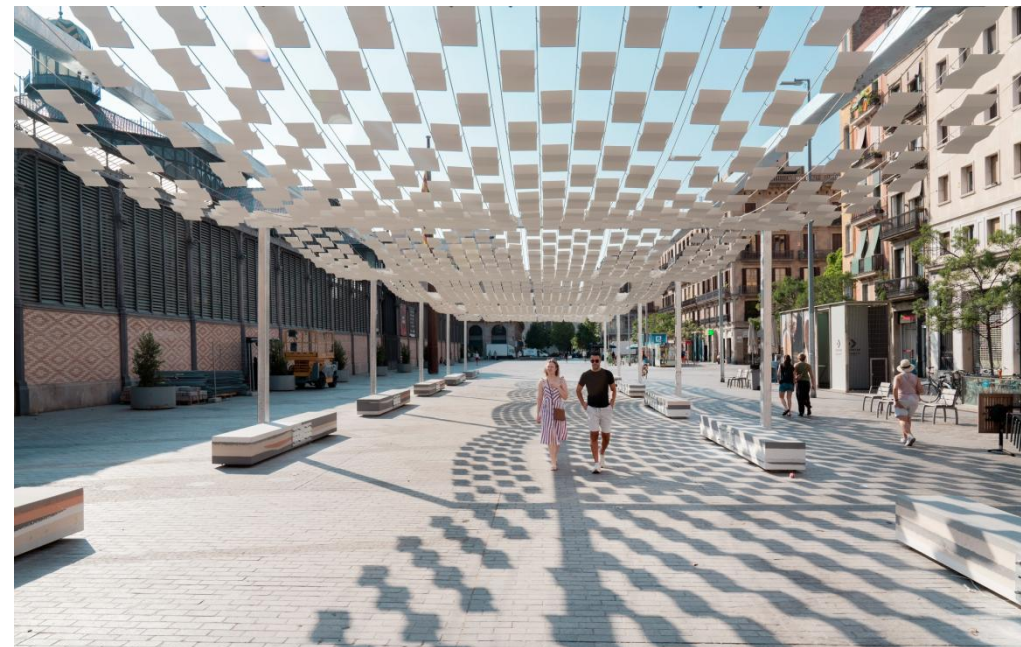
Shades Program School playgrounds





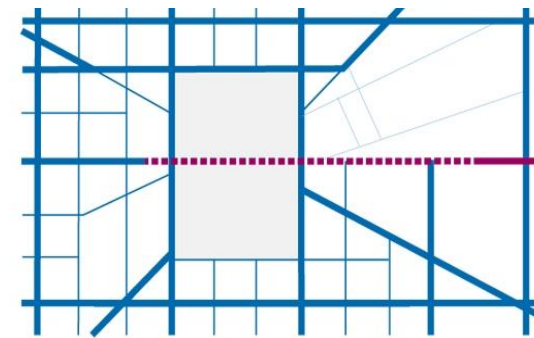
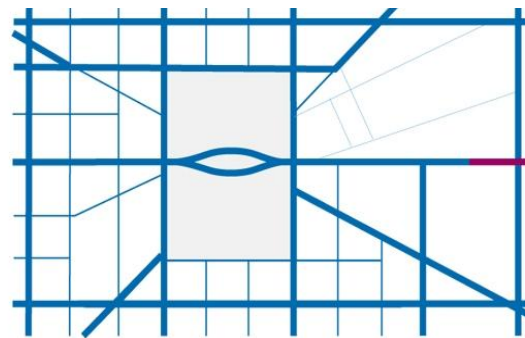
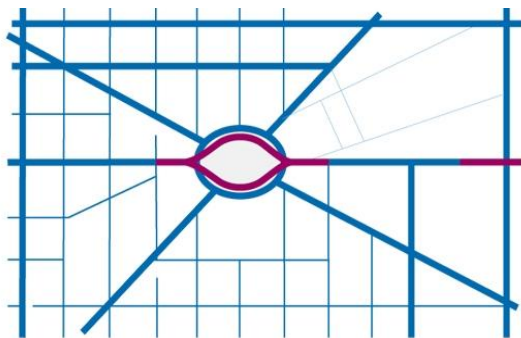
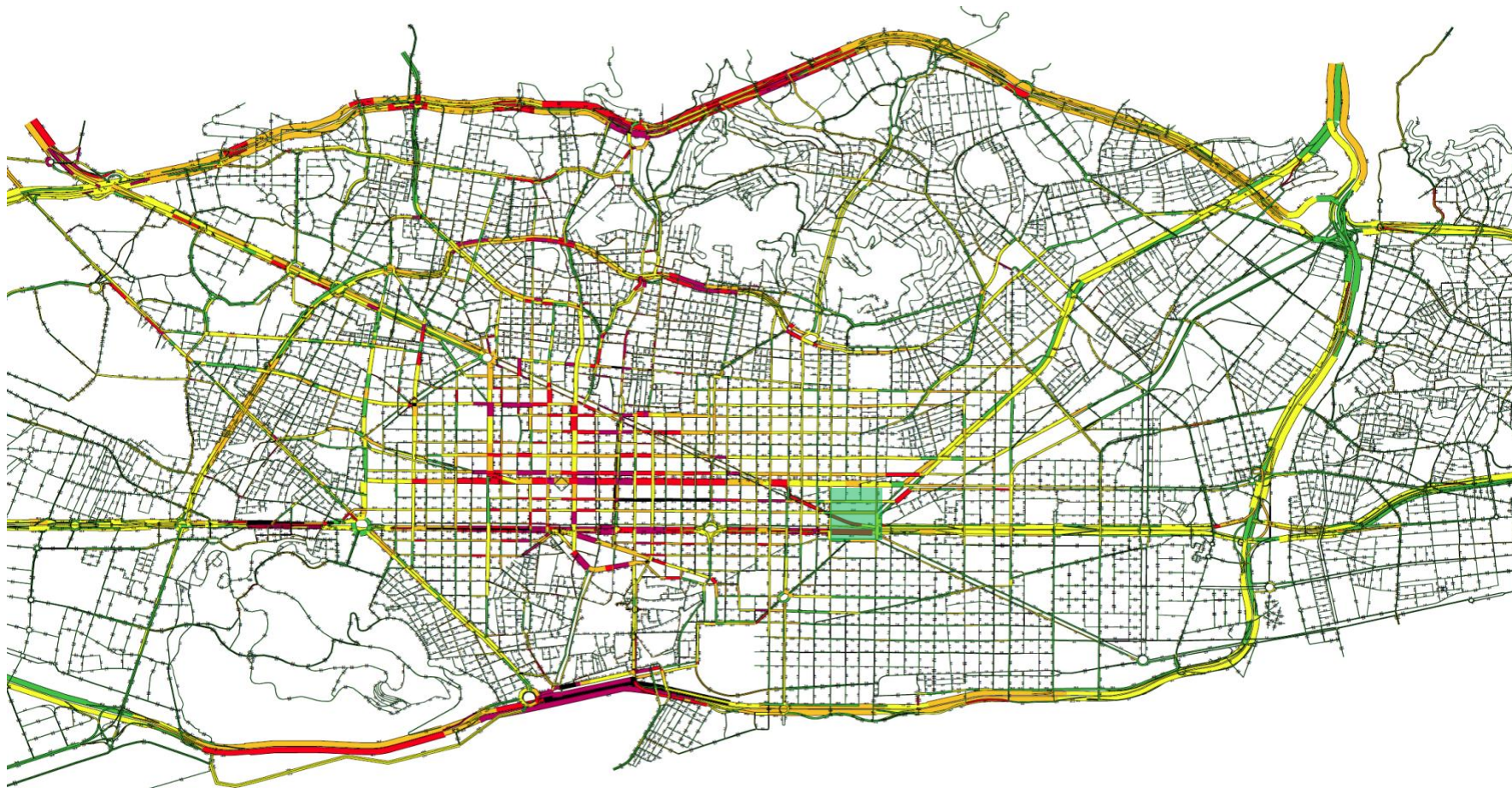
Shades Program

BITHabitat Shades Prototypes Competition



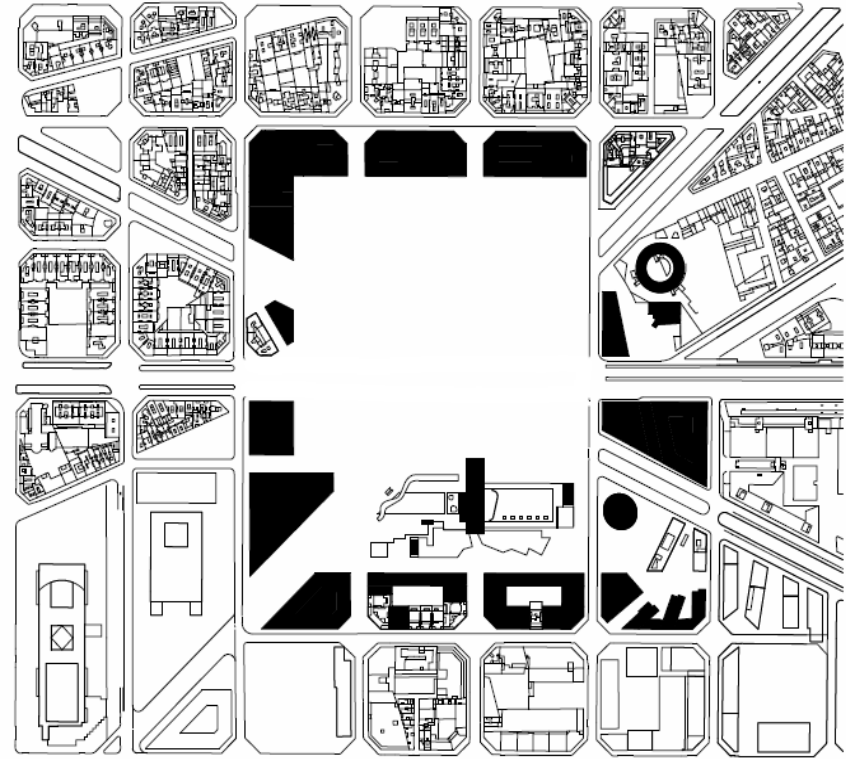
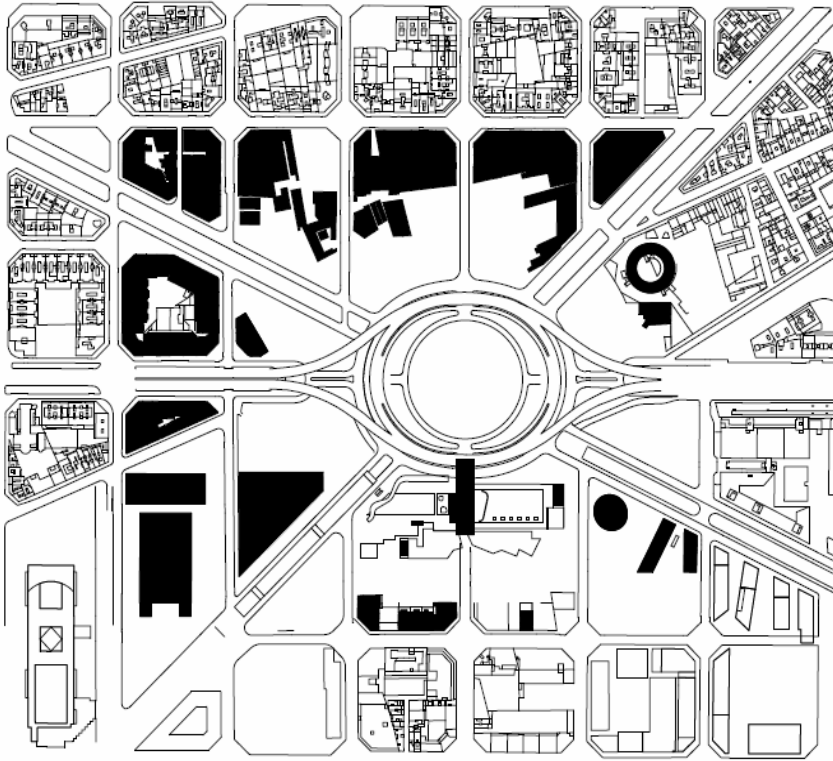


New Glòries Park









The new part of the park covers **4.3 hectares**, including over **9,000 square meters of green space**, a **broad promenade and new spaces for community activities**. This means that with the opening of the central part of the Parc de les Glòries, **Barcelona will have gained 9 hectares for community use**, **30,000 square meters of green space** and more than **1,000 trees**.









Meridiana Avenue







Before



After





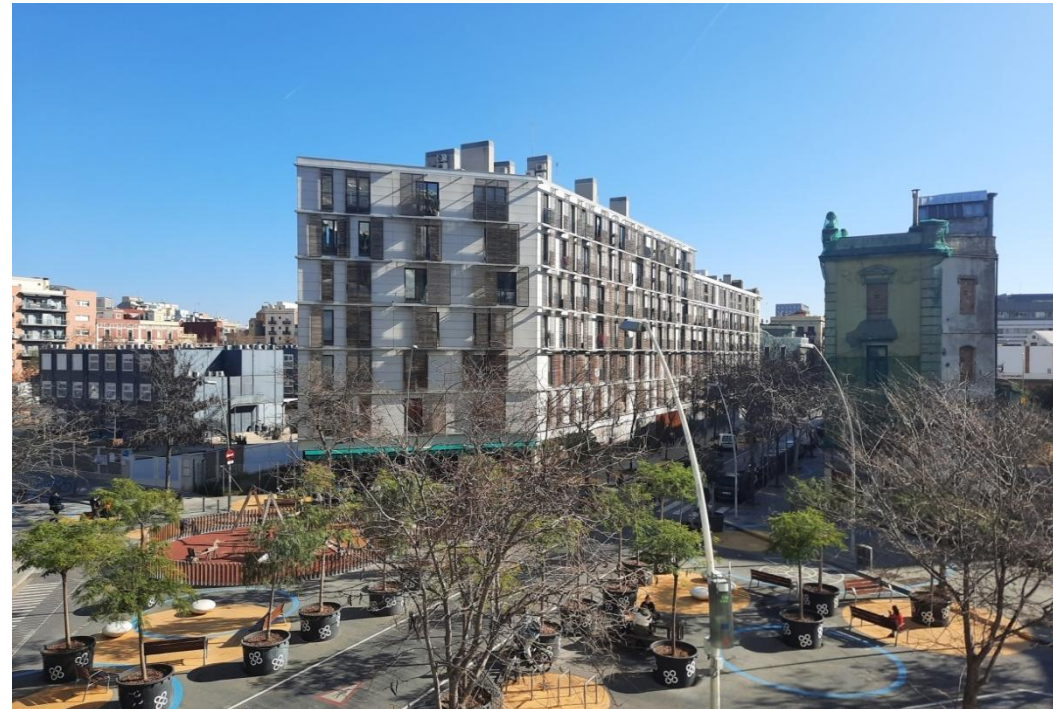
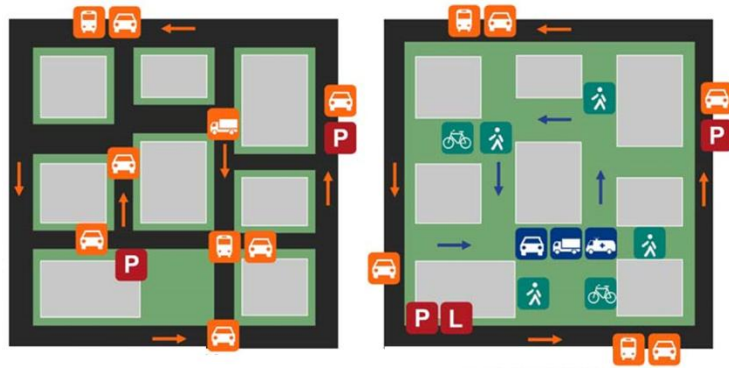


Street Pedestrianizations Superblocks





Poblenou 2016

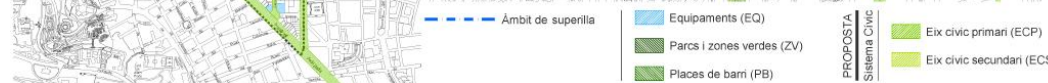
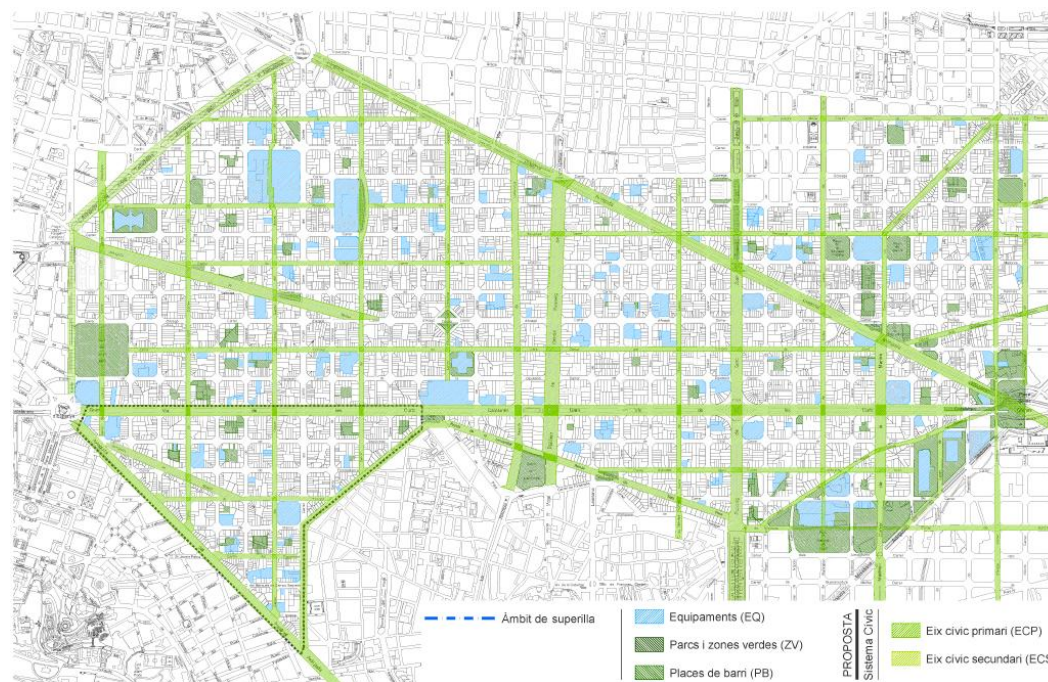
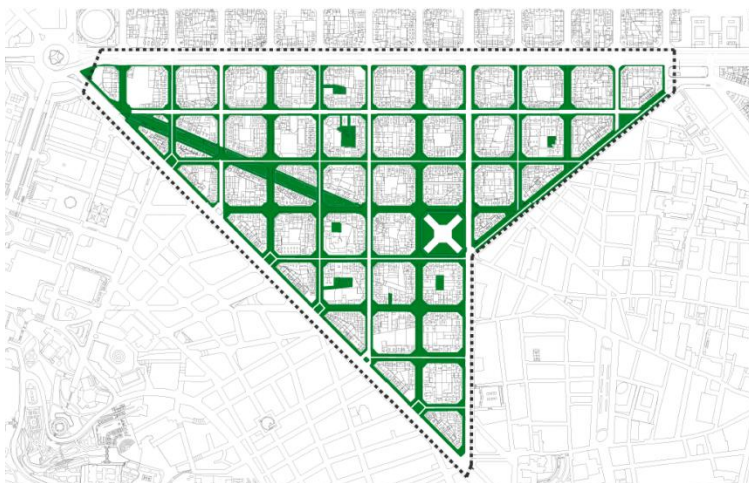
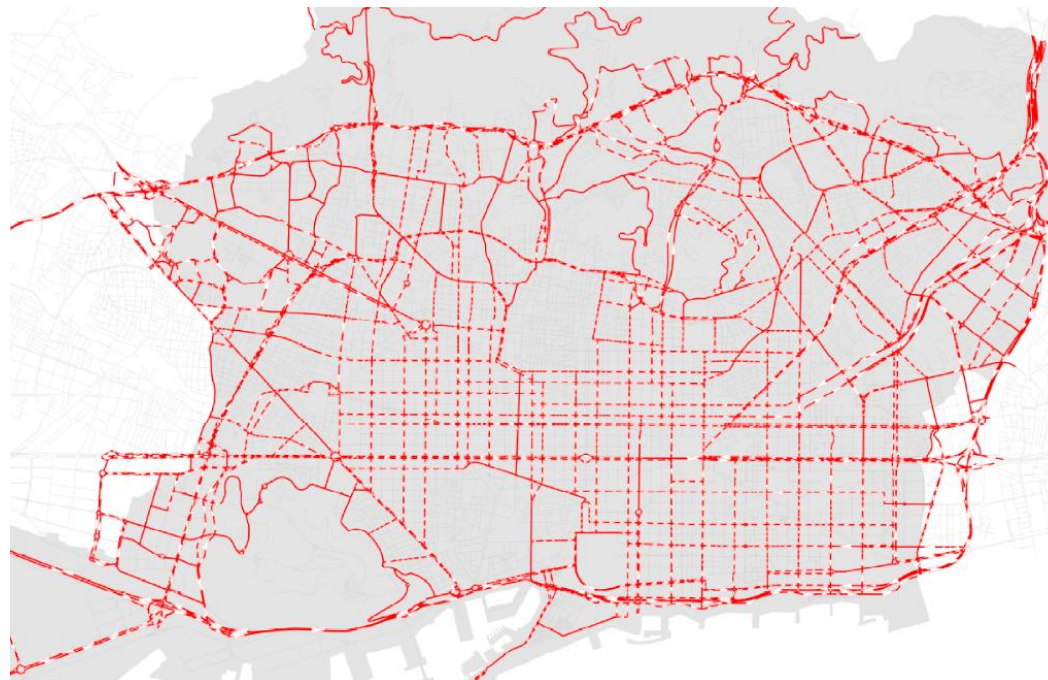
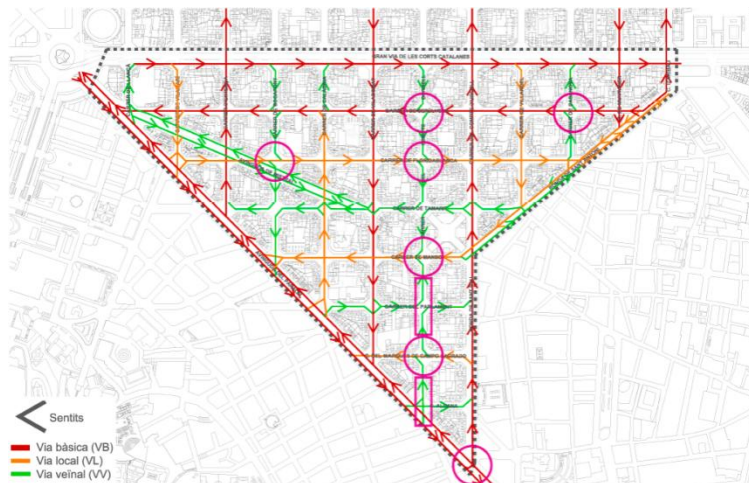






Sant Antonih 2018





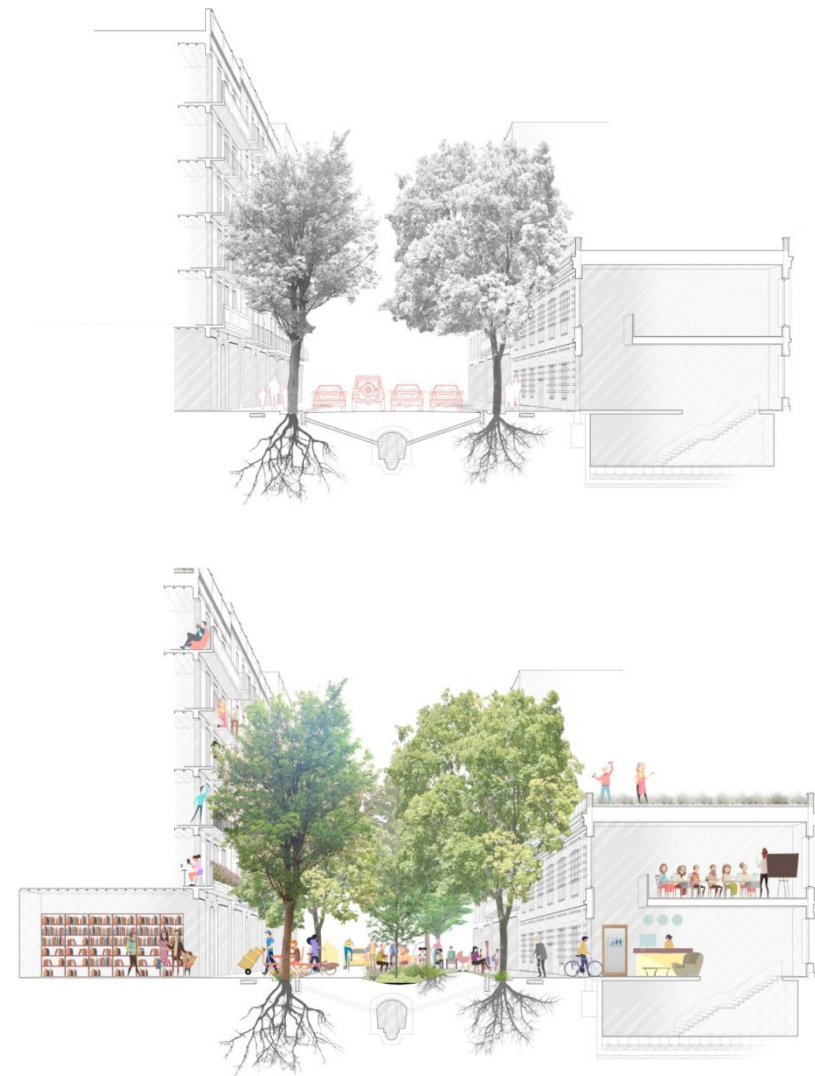








Green Axes 2023



NOVA INFRASTRUCTURA AMBIENTAL	PROXIMITAT Àrees d'estada Àrees de joc	Nova materialitat	Permanències	Accessibilitat
-------------------------------------	--	----------------------	--------------	----------------



B



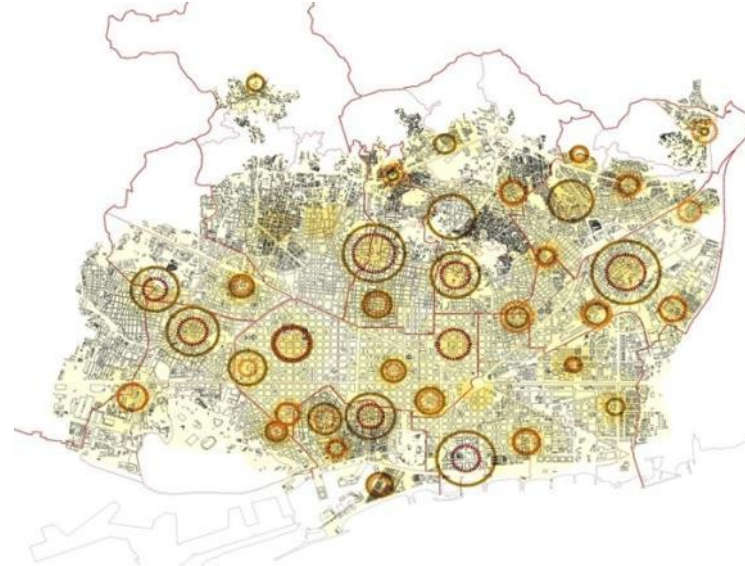
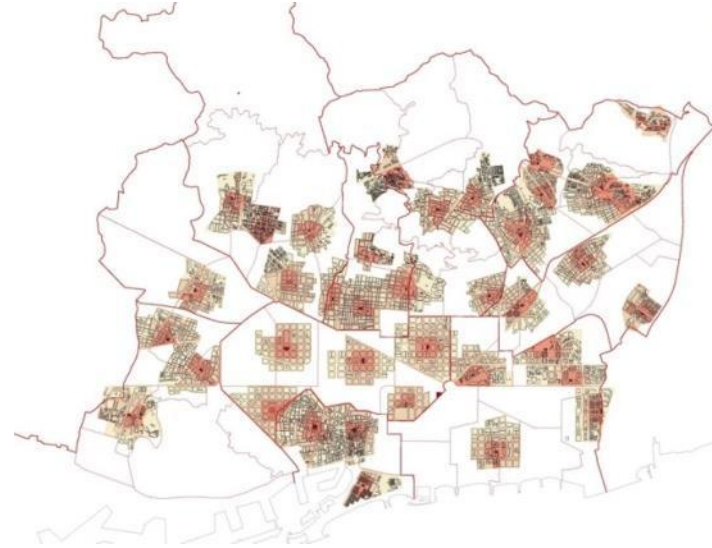
Consell de Cent







Barcelona proximity



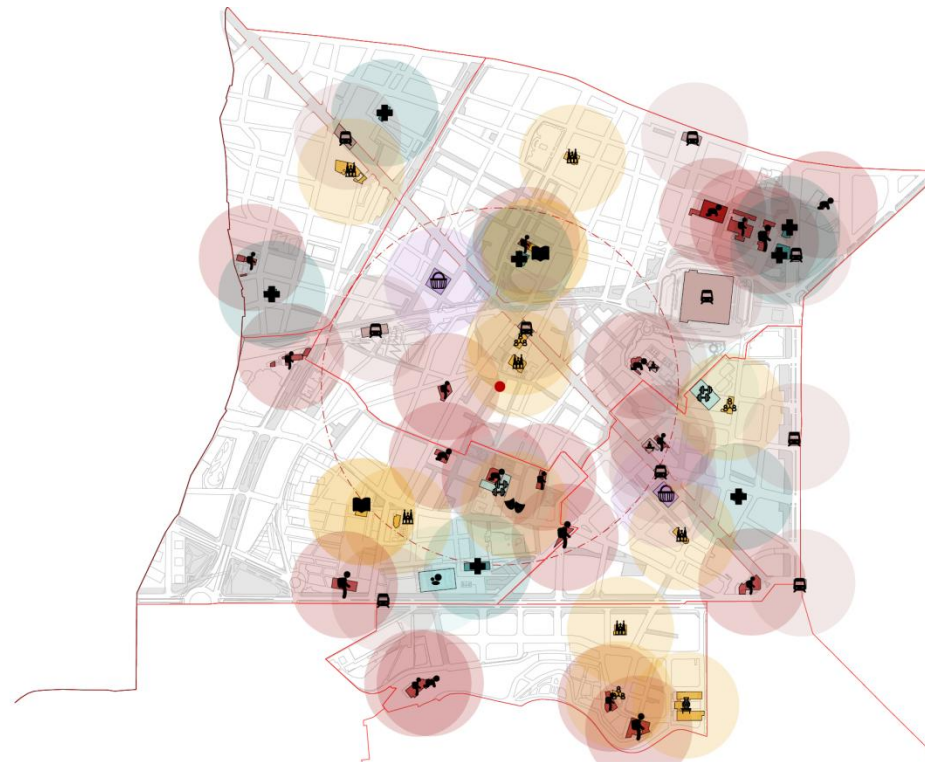
Proximity facilities. Public markets and public libraries



Barcelona proximity



10 Districtes, 73 barris. (2km² – 20/30.000hab.)



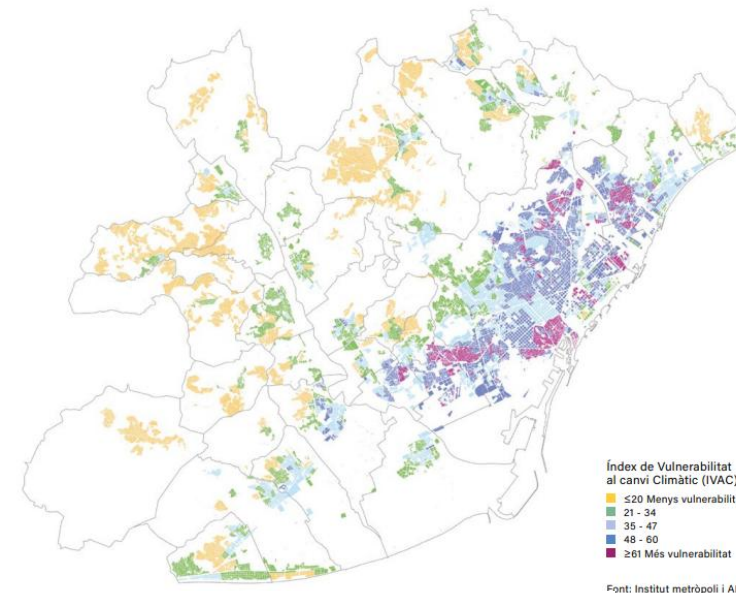
Model de barri equipat / proximitat 10'

Neighbourhood Climate Plan



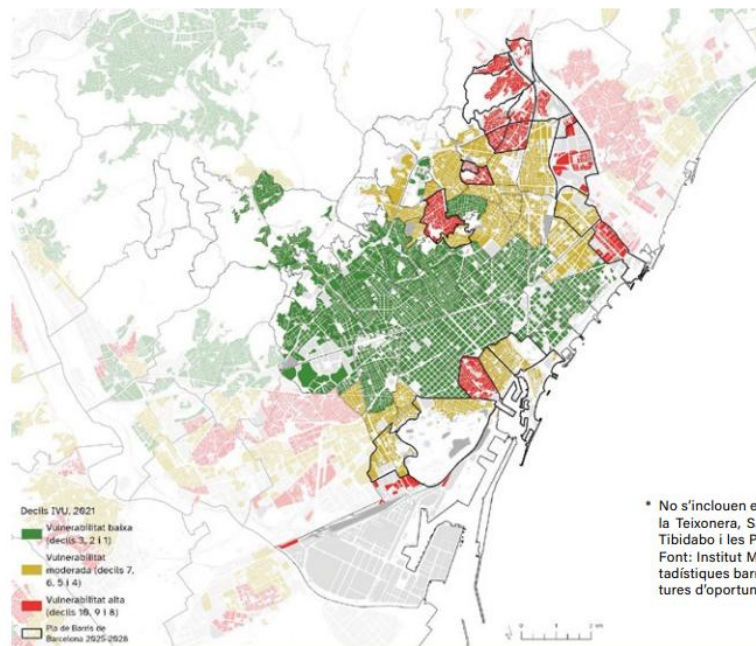
The Neighbourhood Climate Plan, part of the broader Climate Plan, is the municipal strategy aimed at reducing socio-environmental inequalities and improving city residents' quality of life in the context of climate change.

Barcelona is already experiencing the effects of climate change, with more frequent extreme temperatures and a significant decrease in rainfall. This situation particularly affects lower-income neighbourhoods, where climate vulnerability is compounded by energy poverty, job insecurity and a lack of green infrastructure.



Vulnerabilitat urbana i els barris del Pla de Barris 2025-2028

Barris segons grau de vulnerabilitat urbana (baixa, moderada i alta) i barris participants en la nova edició del Pla de Barris de Barcelona 2025-2028*. Barcelona, 2021





438.000
personas
beneficiadas



200
millones de
euros



3
ejes estratégicos
educación y cultura,
espacio público y
accesibilidad, vivienda y
rehabilitación



4
perfiles
prioritarios
personas mayores,
mujeres, la adolescencia
y la juventud, personas
migradas



13
planes de
barrios



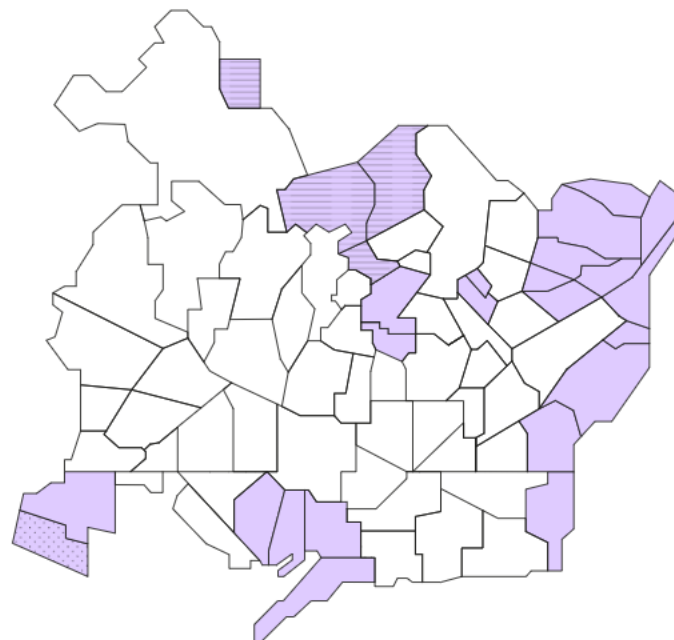
2
planes
singulares



1
plan especial
para Ciutat Vella



27
barrios
participantes



El Plan singular de barrios de montaña



Pla singular de la Marina

- Pla Viure: 2024-2027 strategies
 - › Mobilization of resources and **internal and external coordination** to guarantee the universal right to housing.
 - › Priority in **mobilizing land** to be made available to developers for housing development.
 - › Key Figures:
 - **3,000 homes** completed
 - **5,000 homes** under construction
 - **10,000 homes** ready to start construction
 - › **New Strategic Housing Plan 2025-2032.**

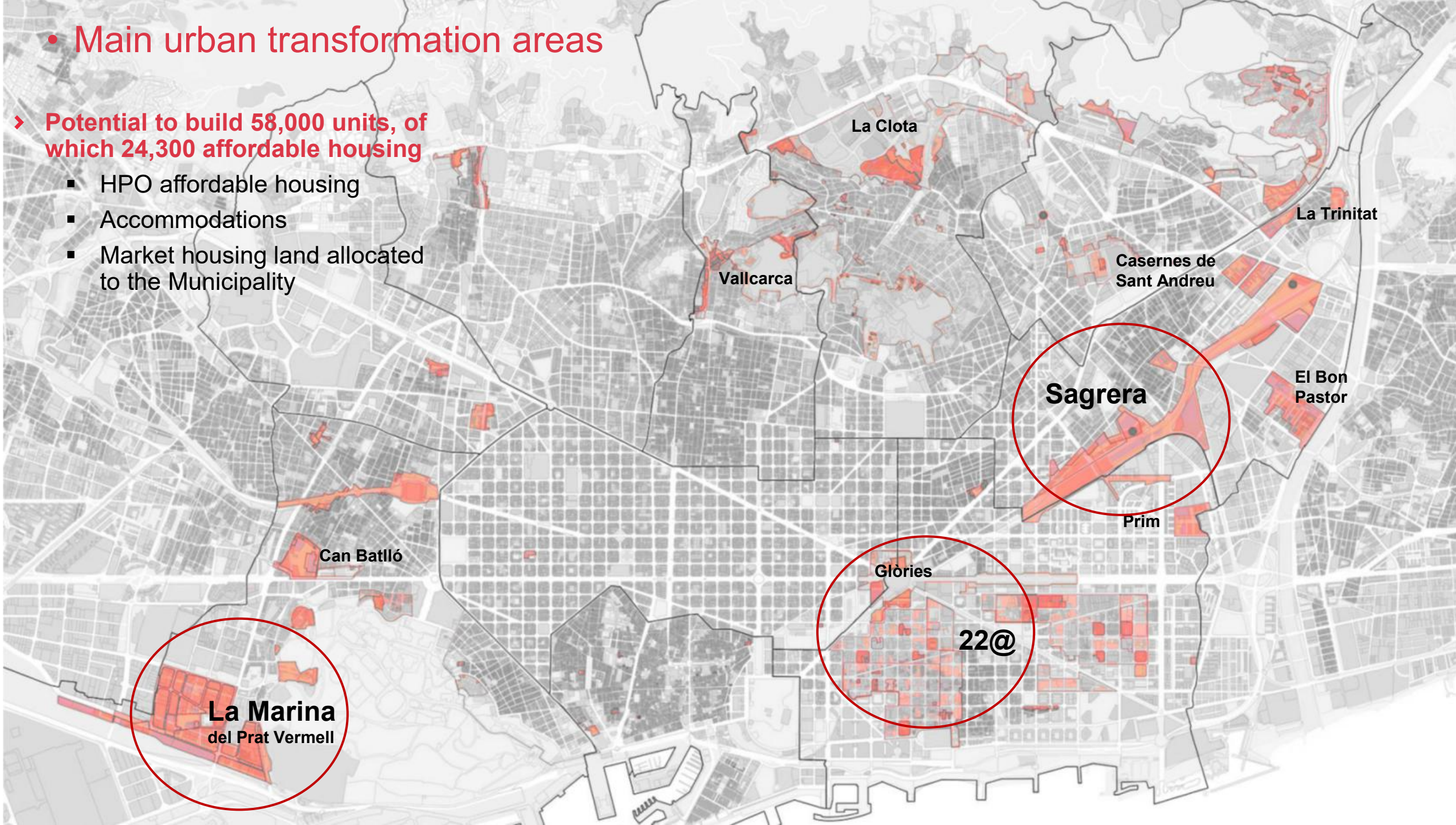


PLA ViURE

**Prioritzem
l'habitatge**

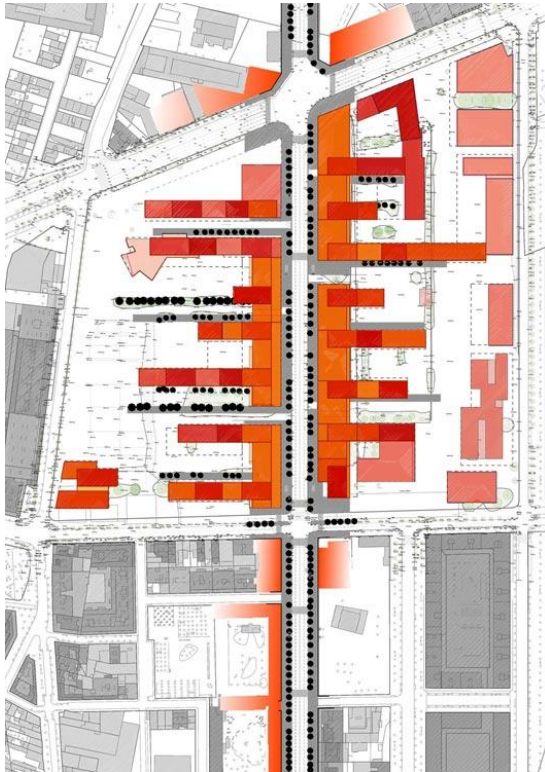
- Main urban transformation areas

- Potential to build 58,000 units, of which 24,300 affordable housing
 - HPO affordable housing
 - Accommodations
 - Market housing land allocated to the Municipality





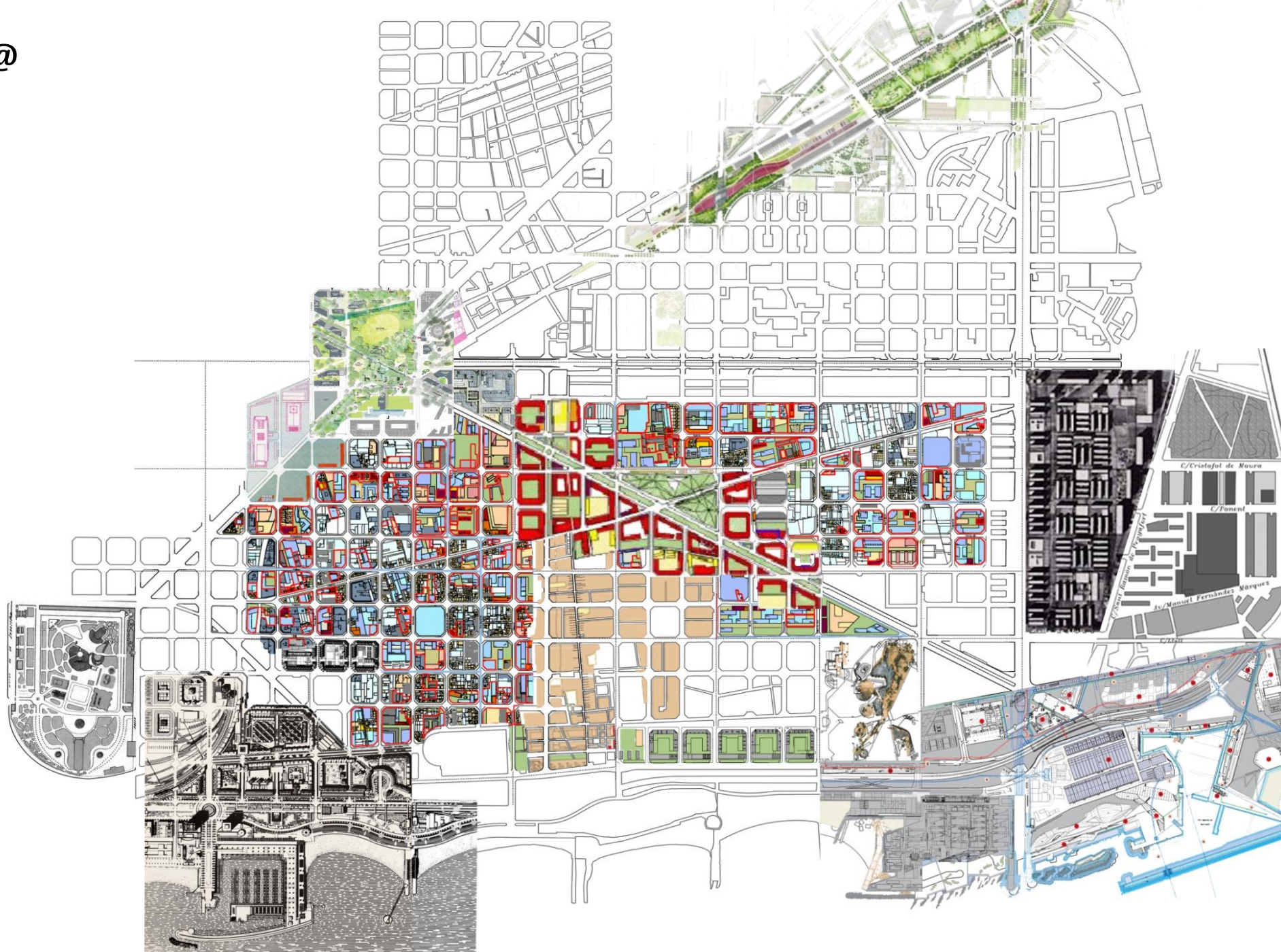
La Sagrera



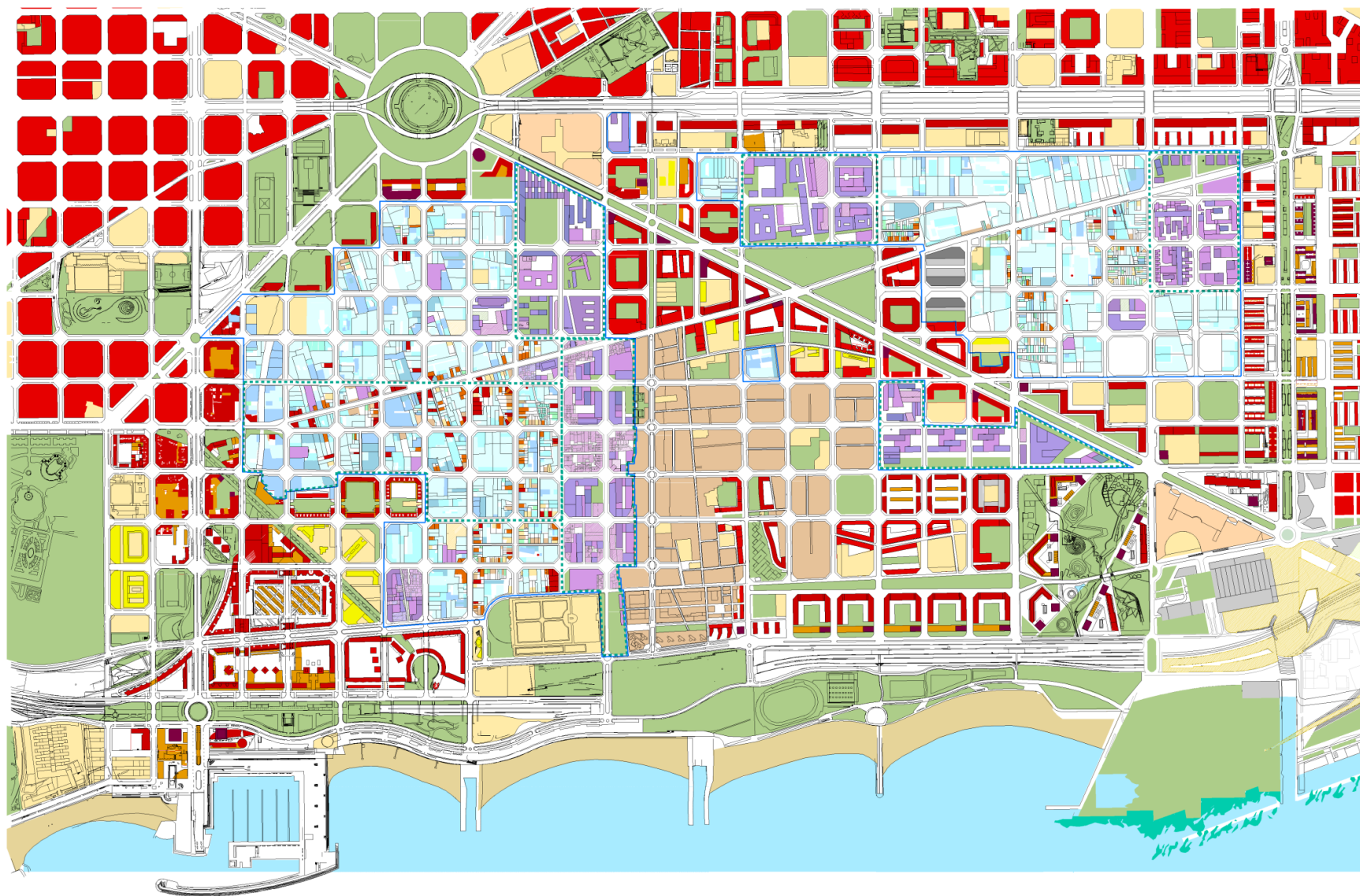




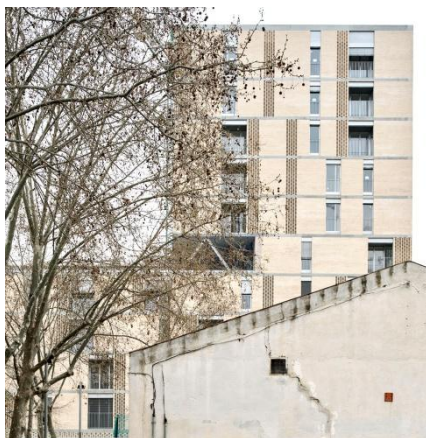
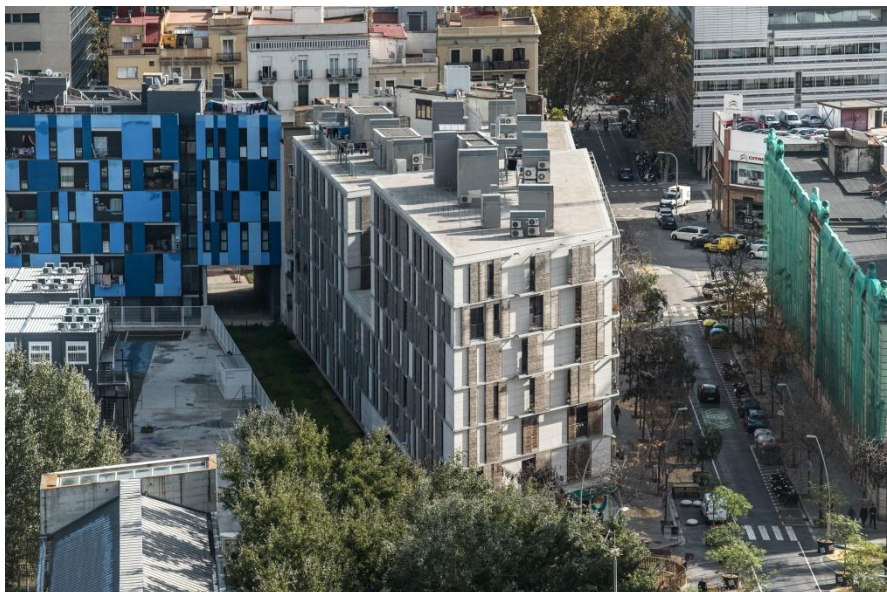
22@





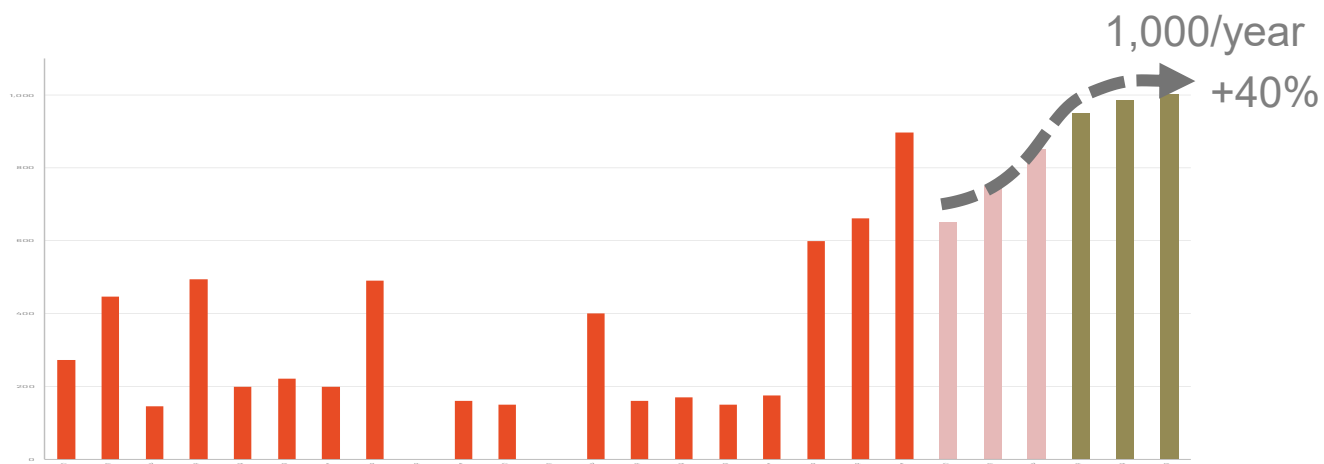






• Direct development by IMHAB

- IMHAB has increased exponentially its **housing development and management capacities**, 80% of the new units being in rental.
- At the end of 2024 there were **105 projects** underway on municipal land, which will generate **6,054 units**.
- 30% of the new housing units will be for the **youth**.
- **Goal: 1,000 units/year**

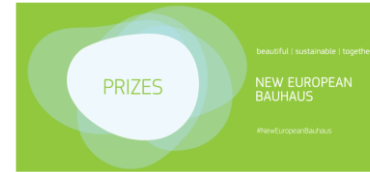


Bon Pastor



C/ Tànger

• Direct development by IMHAB



- Innovation through **industrialized construction** (more than 500 units, 10% already finished) is allowing to:
 - **Minimize the environmental impact** of the buildings through their life cycle.
 - **Reduce time**, from 5 to 2 years on average.
 - **Reduce costs**.
 - **Improve the quality**, control and efficiency of the construction works.
- Development has also accelerated thanks to the use of **joint project + construction procurement**.

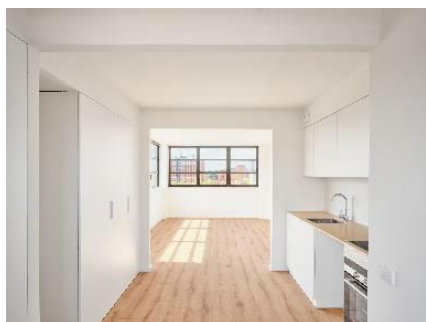


APROP Ciutat Vella



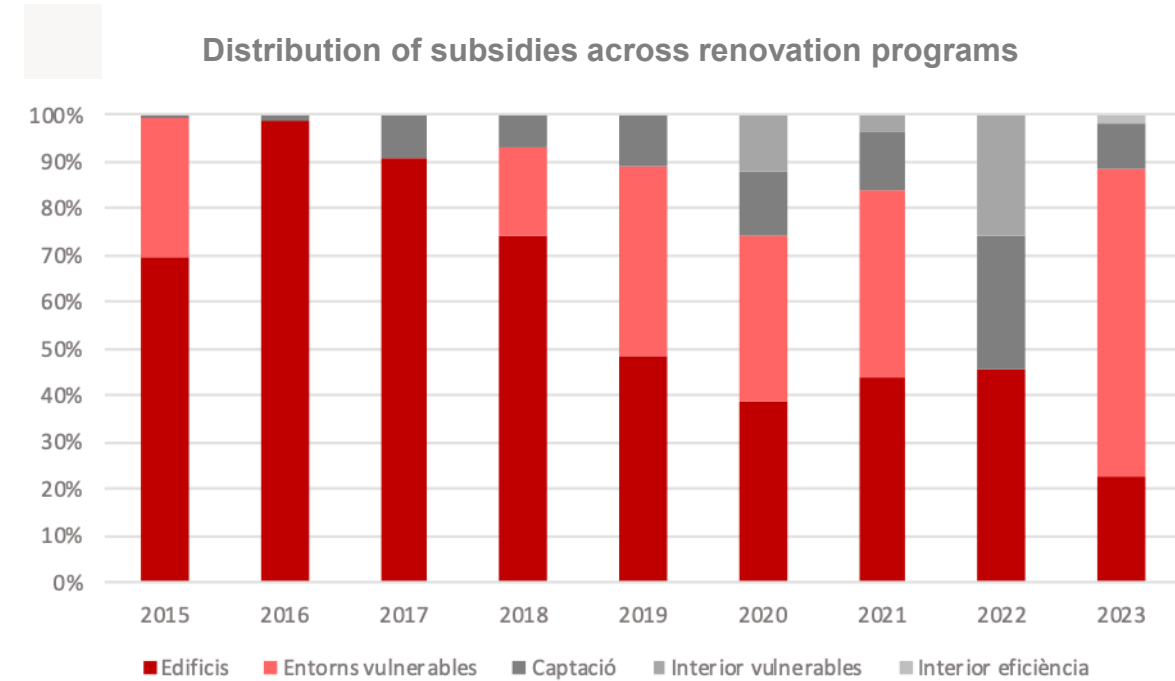
C/ Lola Iturbe 13

- Industrialized construction



• Renovation grants

- **Goal:** Promote housing and neighborhood improvement, particularly in terms of accessibility and energy efficiency.
- Policy tools (2016 – 2023):
 - General call 62,509 units
 - Unit refurbishment for vulnerable households 664 units
 - Vulnerable environments 2,760 units
 - Renovation of mobilized private units 1,061 units
 - **Total** 67,093 units
- 171M€ in the period 2016-2023.
- Some 67.100 beneficiaries.



Vallcivera Ciutat Meridiana Renovation project



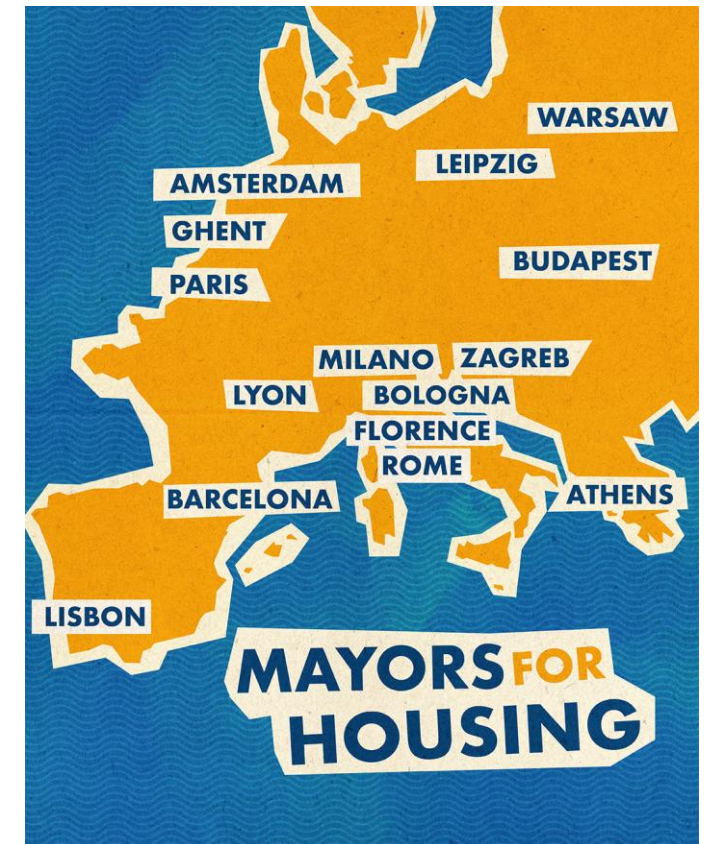
Fortuna la Marina Renovation project

- Urban Regeneration programs
 - › High Complexity Estates (FAC).
 - › Urban Regeneration and Renovation Areas (ARRUs)
 - › **Renewable Barcelona 2030 Plan** (Next Generation EU)



• Mayors for Housing

- Mobilization of large European metropolises: **common strategy with European institutions**. Barcelona, Paris, Rome, Amsterdam, Milan +11 EU cities.
- **European Housing Action Plan by the Mayors for Housing** alliance: Joint request to improve the role of cities in the definition and implementation of the EU housing agenda.
 - Mobilise **€300 billion annually** to build 188,000 new social and affordable housing by 2030, and renovate 4.7 million housing units every year.
 - Activate the national escape clause to enable investment in sustainable social and affordable housing.
 - Designate stressed housing market areas as the cornerstone of the new Agenda for Cities and the future of cohesion policy.
 - Reform of State Aid rules for Services of General Economic Interest to enable greater investment in social and affordable housing.
 - Recognise cities as partners in the design and implementation of European housing programmes.





Thank you!



Barcelona 2026
UIA World Congress of Architects
UNESCO Capital of Architecture

Panel - Q&A



Neda Kostandinovic
International Relations
Coordinator,
Office of the Chief
Architect, Barcelona City



**Jose Luis Fdez.
Casadevante Kois**
Técnico,
Grupo Cooperativo
Tangente



Timothy Clement
Director of Social Value &
Sustainability for Morgan
Sindall Construction





Community of Practice Webinar

Built Environment: Retrofit in Real Life II - Challenges, Champions & City Solutions

Retrofitting our buildings is one of the most powerful tools cities have to reduce emissions - but it's also one of the hardest to scale. It requires coordination, creativity, and commitment from every part of the urban system.



Thursday
27 November 2025



Time
10:00-11:30 CEST



Register Now



Meet the speakers:



Fernando Sigchos Jiménez
Secretary General at
European Builders
Confederation EBC



Cristina Jareño Escudero
Valencian Institute of
Construction INSIDE-CoVE



THANK YOU

#EUmissions
#MissionCities
#EUGreenDeal

