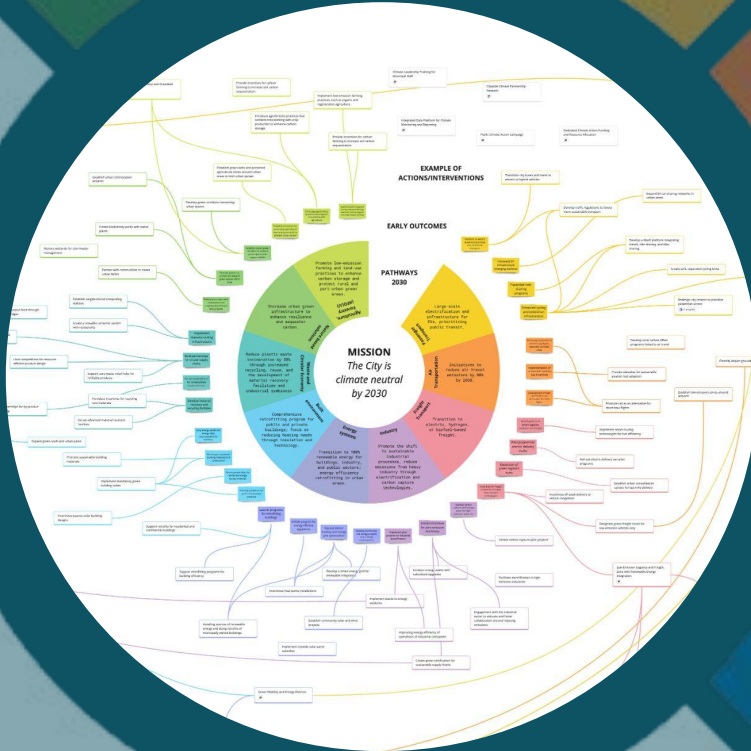


# Portfolio Mapping as a tool

An introduction to using Portfolio Mapping for understanding and implementing your city's climate actions, exploring how to connect actions, actors and resources, while building an evolving plan that supports real change.

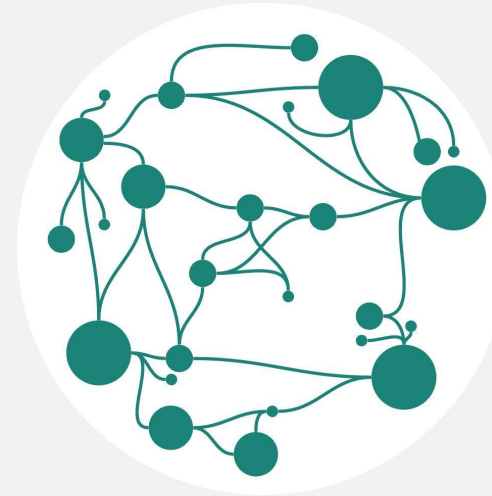


Funded by  
the European Union

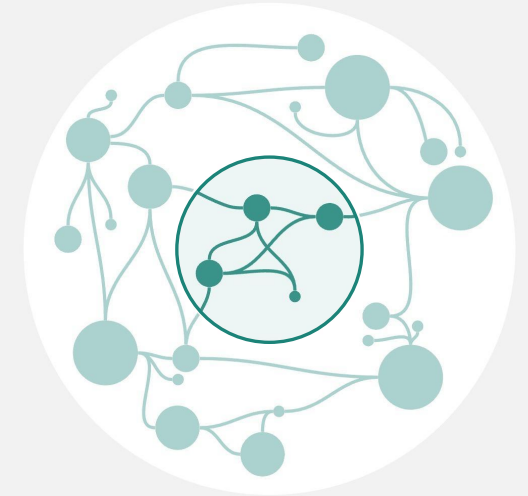
# Why Portfolios?

## The case for thinking in portfolios

When transitioning our cities toward NetZero, there will always be more complexity in the urban ecosystem than within any one organisation working within it.



**Ecosystem  
Complexity**

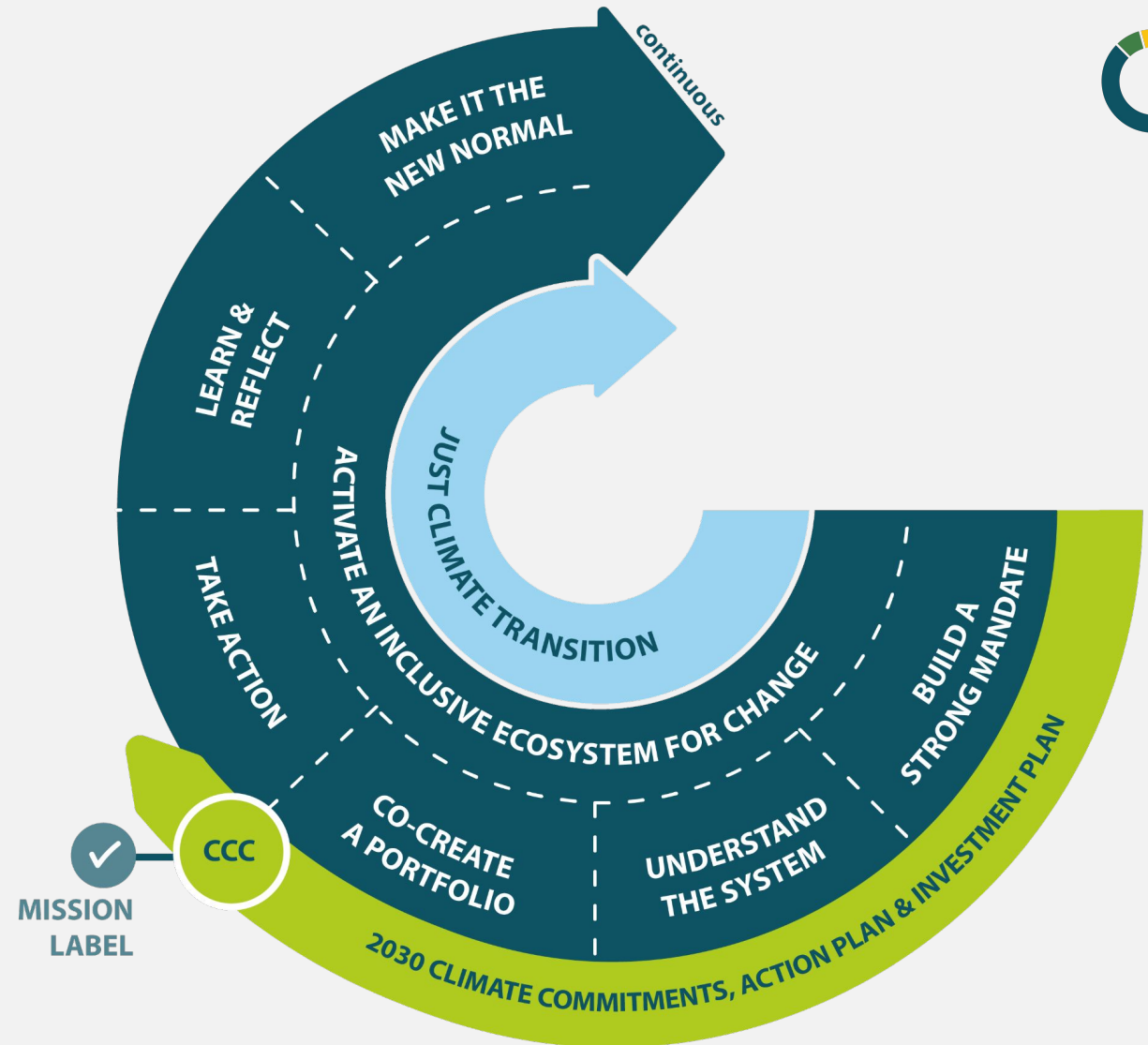


**Organisational  
Capacity**



# Co-create a Portfolio

The co-creation of a portfolio is an ongoing process that brings together existing policies, actions and programmes with new or accelerated interventions



# Co-creation of Portfolio

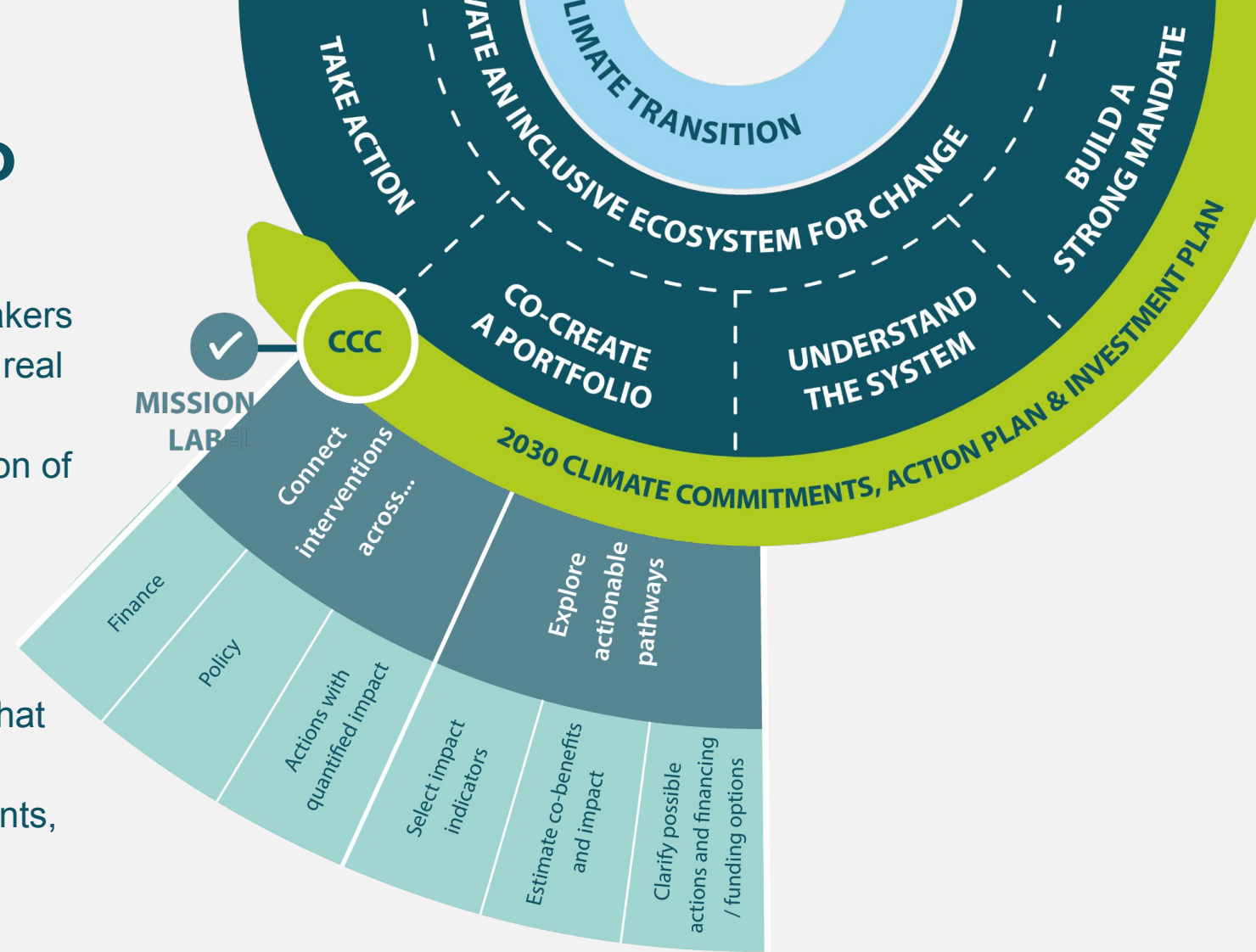
## Exploring actionable pathways

Evaluating different scenarios helps decision-makers identify which sets of interventions would create real pathways toward climate-neutrality.

Exploring pathways to change assists the creation of the Action Plan and Investment Plan over time (including future iterations of these documents).

## Connecting actions

A coherent portfolio includes visible early wins, that lead to significant early impact towards the climate-neutrality goal. It also includes experiments, to test innovative options that create insights for future decisions.



# Co-creation of Portfolio

The co-creation of a portfolio, facilitated by the Transition team, is an ongoing process that brings together existing policies, actions and programmes with new.

## **Multi-actor**

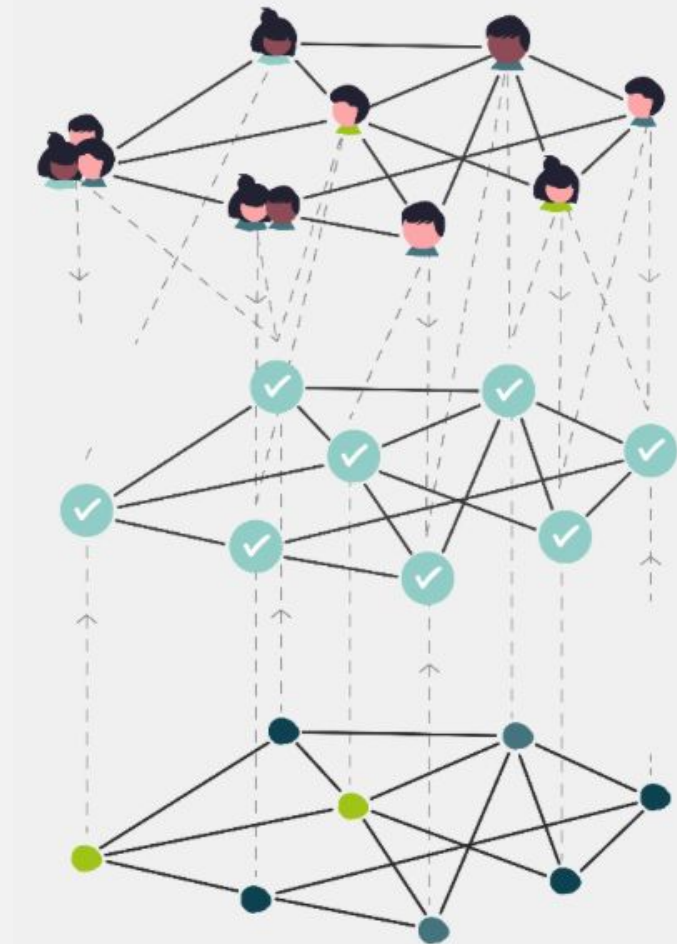
Bring together efforts across departmental silos and diverse stakeholders.

## **Multi-level**

Bridging actions across national, regional and city-based governance systems.

## **Multi-lever**

Utilising multiple levers of change such as policy, finance, stakeholders engagement, technology, digital & data systems.





# Portfolio mapping as a tool

Portfolio mapping is both a tool and a process aiming to create a **better understanding** for the portfolio and to keep the portfolio alive by iterating it in order to achieve best possible impact.

- Keeping the portfolio in your head at all times is an exhausting task or even impossible. Portfolio mapping can help you **zoom in and out** of your portfolio, enabling you to see and strengthen connections.
- The mapping can help to **engage stakeholders**, by showing them how they're a part of the system and to align efforts and investments where relevant.



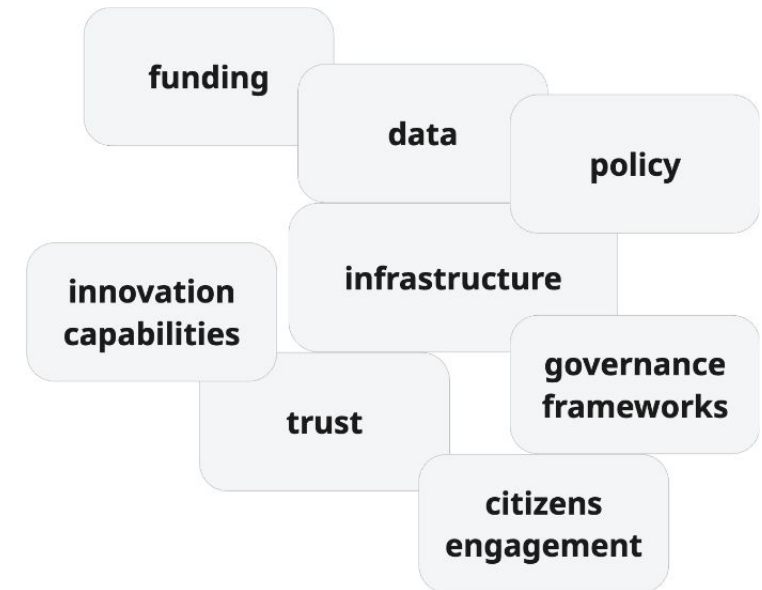
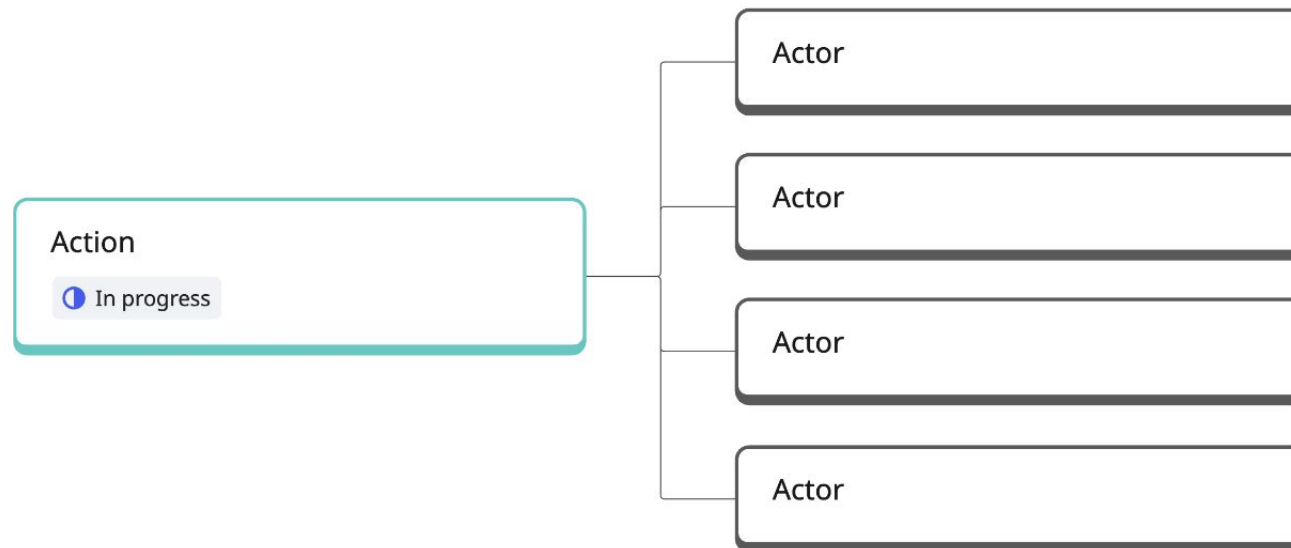


# Elements of a portfolio

**Actions:** The specific interventions we implement in the system, including experiments, programs, and initiatives designed to create change

**Actors:** Key stakeholders, partners, and alliances whose participation, expertise, and buy-in are crucial for successful implementation

**Assets:** Both enabling and constraining resources - including funding, infrastructure, data, knowledge, and institutional frameworks - that shape what's possible



## A non-linear overview.

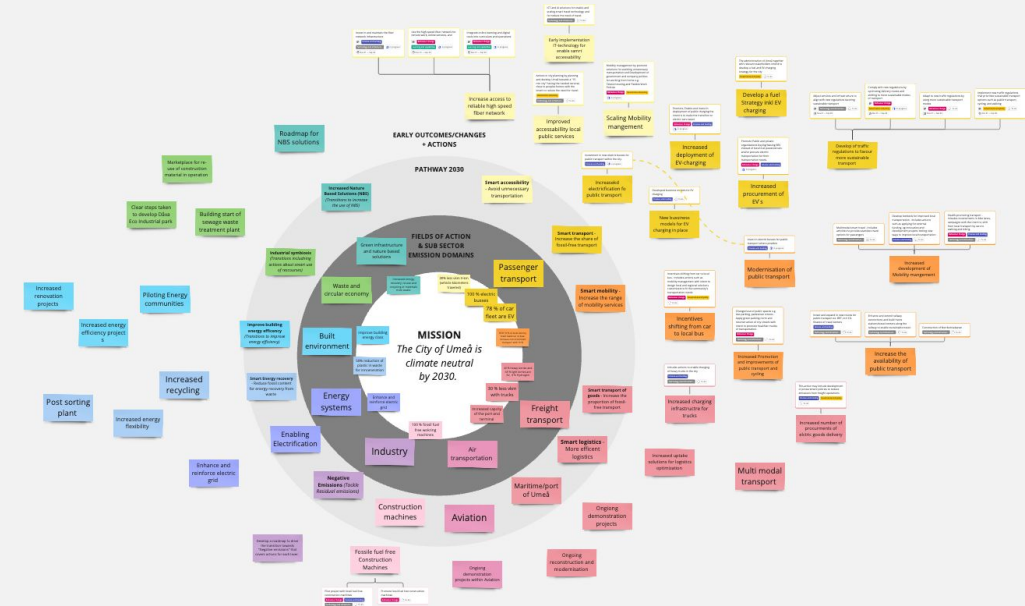


NetZeroCities has received funding from the H2020 Research and Innovation Programme under grant agreement n°101036519.



# Example from Umeå

# How to unpack your Action Plan and paint a picture of your portfolio?

[illegible][illegible][illegible][illegible][illegible][illegible]



# LET'S GET TO WORK

**Maria Klint**

Portfolio Designer

Dark Matter Labs



NetZeroCities has received funding from the H2020 Research and Innovation Programme under grant agreement n°101036519.