



CCC Submission Info Session - Window 4

16 July 2024
10:00 – 11:00

ICLEI, EIB, JRC, BWB, CKIC

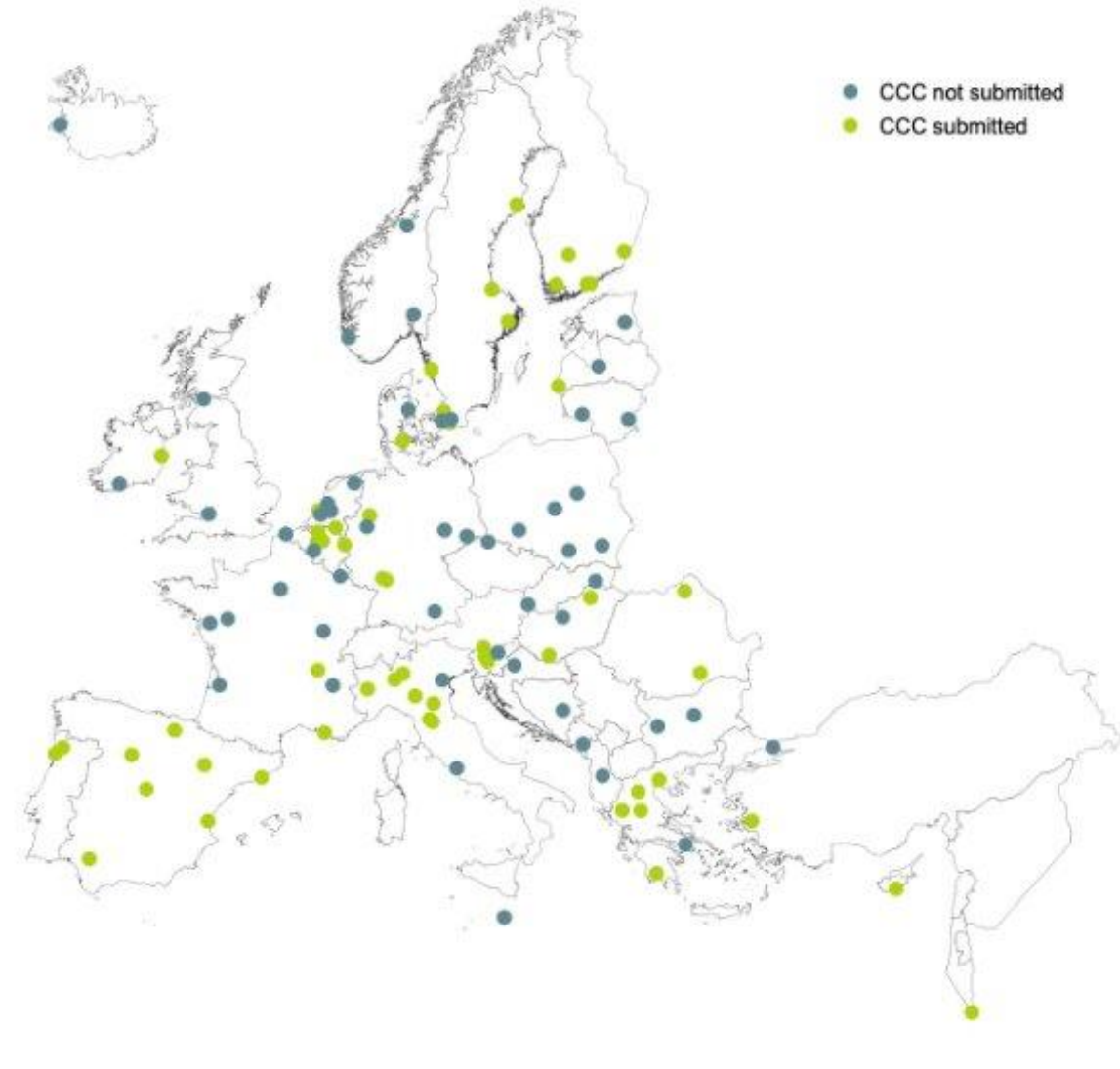


Funded by
the European Union



Agenda

- a. CCC submission process
- b. Action plan, Inventories and Impact Pathways
- c. Investment plan & Innovative finance
- d. Commitments Document





Window 4 - Timeline and next steps

Review of CCC drafts

- **When:** Until August 2024.
- **Who:** NetZeroCities Consortium
- Share a draft as **early** as feasible. Include a **draft checklist (word)**.

Coherence and completeness check

- **When:** September/October 2024
- **Who:** NetZeroCities Consortium

EC review of CCCs

- **When:** For 4 months from submission
- **Who:** RTD, JRC, EIB, IFRs



Submission window

When: From September 4th to September 16th, 2024

What:

- Climate City Contract (Commitments AP, and IP)
- Online Completeness and Coherence Checklist

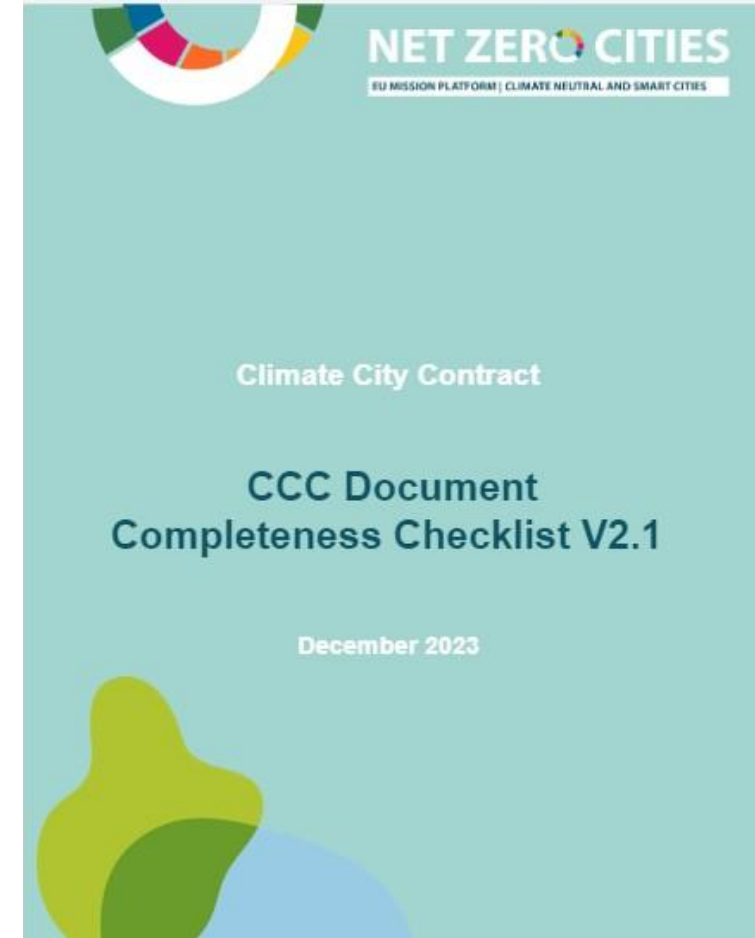




Why use the checklist v 2.1

A **tool** for cities and reviewers:

- "Packing list" for the CCC document: for cities to **self-assess** on the completeness and coherence of the CCC document before submission.
- Identify **readiness for EC review**, and identify **areas in need of further support**.
- **NB:** The submission will **not be completed without the digital checklist**.





How to use the checklist

The Checklist is divided into 3 main categories, each corresponding to one of the mandatory elements of the CCC:

- **CCC Commitment document & overall coherence**
- **CCC Action Plan**
- **CCC Investment Plan**

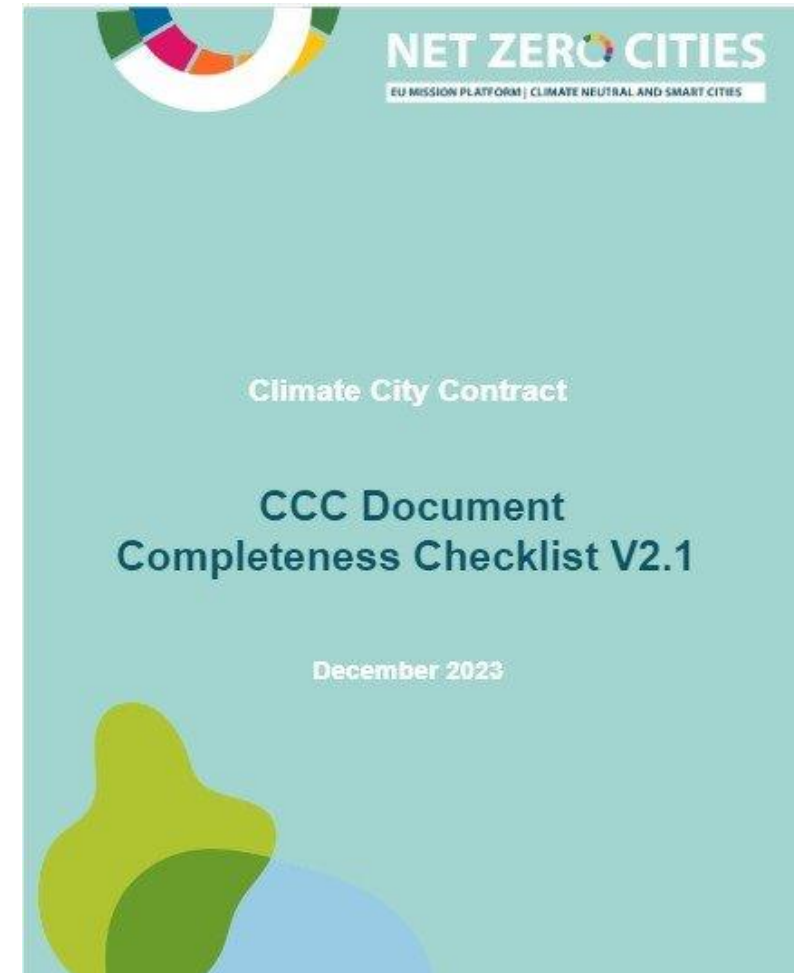
Questions either have

- two options : **Yes and No**, or
- a range of four: **A, B, C and D**.

For each question, only one answer can be selected.

For each question it is key that you specify the **name** of the document and the **place** where the question is addressed, to facilitate your CCC review as much as possible.

Comments are very useful too!





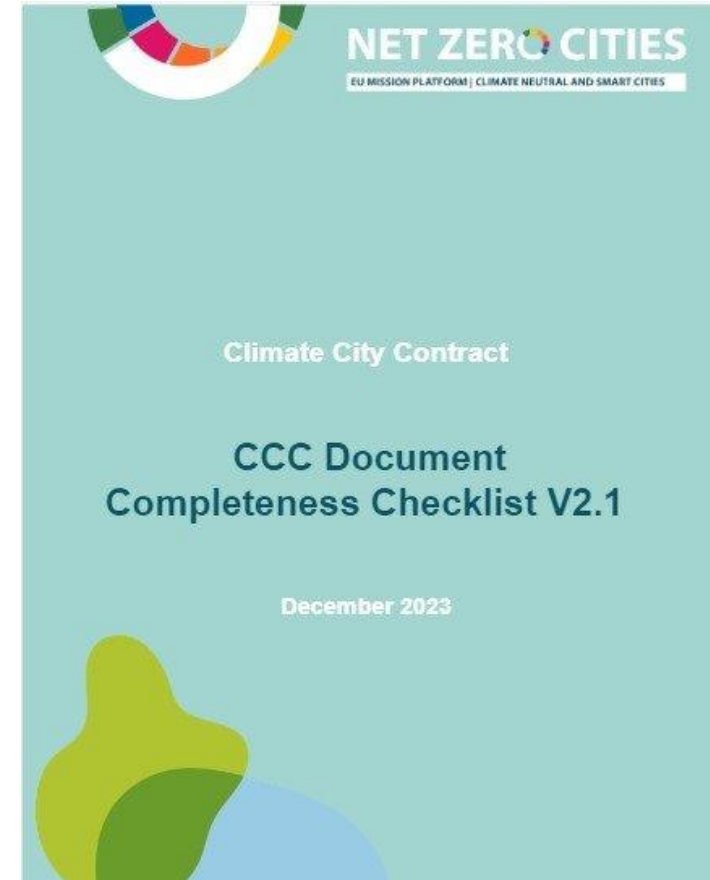
Where can I find the checklist

Before submission

An **editable word version** of the CCC Completeness and Coherence Checklist is available in the Knowledge Repository on the NZC Portal

For Submission – digital version

In order for your submission **to be complete** you must complete the online version . A step-by-step guide will be shared with you closer to submission.





Action plan Inventories and Impact Pathways

JRC, ICLEI, CKIC



Funded by
the European Union



CCC Completeness and Coherence Checklist

16 July 2024

Key points from JRC review of Climate Neutral Action Plans

Key messages and recommendations

- **Fully clarify the target:**
 - **Percent emissions reduction** and **timeline** for both emissions reduction and **compensation**: if absolute-zero: 100% emissions reduction by 2030. If net-zero: X% emissions reduction by 2030 as compared to YYYY levels, with any remaining (100-X)% emissions compensated via carbon sinks and credits by 2030.
 - The **sources** of emissions: sectors + specific high-emitting sources (e.g. ETS, ports, airports, industrial clusters, historical/heritage areas).
 - The **scopes**. We expect: Scope 1 and 2 stationary energy (buildings), Scope 1 and 2 transport, Scope 1 and 3 waste, Scope 1 AFOLU, Scope 1 IPPU.
 - The **gases** (preferably for all sectors and scopes)
 - The **geographical coverage** (mark exclusions, show map)

Key messages and recommendations

- Fully clarify the target:

EXCLUSIONS DO NOT IMPACT NEGATIVELY REVIEW PROCESS if:

Clearly indicated

Duly justified

Climate neutrality by 2050

Some recurrent cases:

- 1) **NO DATA**: be clear about efforts and timeline to fill the gap and on future inclusion in target
- 2) **LABELLED AS “INSIGNIFICANT”**: evidence needed.

Key messages and recommendations

- Fully clarify the target:

EMISSIONS REDUCTION / AVOIDANCE

Examples: retrofitting, RES, CCS to avoid releasing emissions in the atmosphere

Relevant to: emissions reduction target, action portfolio

SHALL NOT BE CONFUSED WITH

EMISSIONS COMPENSATION

Examples: carbon credits, forests, CCS to sequester carbon from the atmosphere

Relevant to: residual emissions and their compensation strategy

Key messages and recommendations

- Fully clarify the target



CONSISTENCY CRITERION

MAKE SURE THIS IS REFLECTED IN:

THE BASELINE INVENTORY

THE EMISSIONS GAP TABLE

THE ACTION PORTFOLIO / RESIDUAL EMISSIONS STRATEGY

Key messages and recommendations

- **Accounting issues:**

- ❑ Avoid conflating **IPPU, AFOLU** and even **waste emissions** with **stationary energy / transport emissions**. Be careful about energy- and non energy-related emissions and their respective accounting sectors.
- ❑ **Avoid a selective approach to AFOLU** (i.e. if natural sinks are included in the strategy, relevant positive emissions should be equally accounted for).
- ❑ **Fully disclose the methodology used to build up the baseline inventory**. For BAU inventories, specify demographic and economic trends, what existing plans are incorporated, which changes in the electricity mix are considered, and discuss default VS local values.

Key messages and recommendations

- **Emissions gap:**
 - Provide full clarity where **existing plans / BAU projections** deliver part of the emissions reduction (no double-counting with CCC should be ensured).
- **Disconnection between different parts of CCC:**
 - **Harmonise Action and Investment Plan.**

Key messages and recommendations

For future iterations...

- **Residual emissions:**

- Provide an **ANALYSIS** of what makes **residual emissions** not feasible to reduce by 2030: sources, reasons / constraints. Check out:

Comment

<https://doi.org/10.1038/s41558-024-01961-z>

Shining light on residual emissions for cities

- **Digital integration:**

- Make it a **climate-neutral AND smart transition** (do not overlook the digital component).

Thank you



© European Union 2020

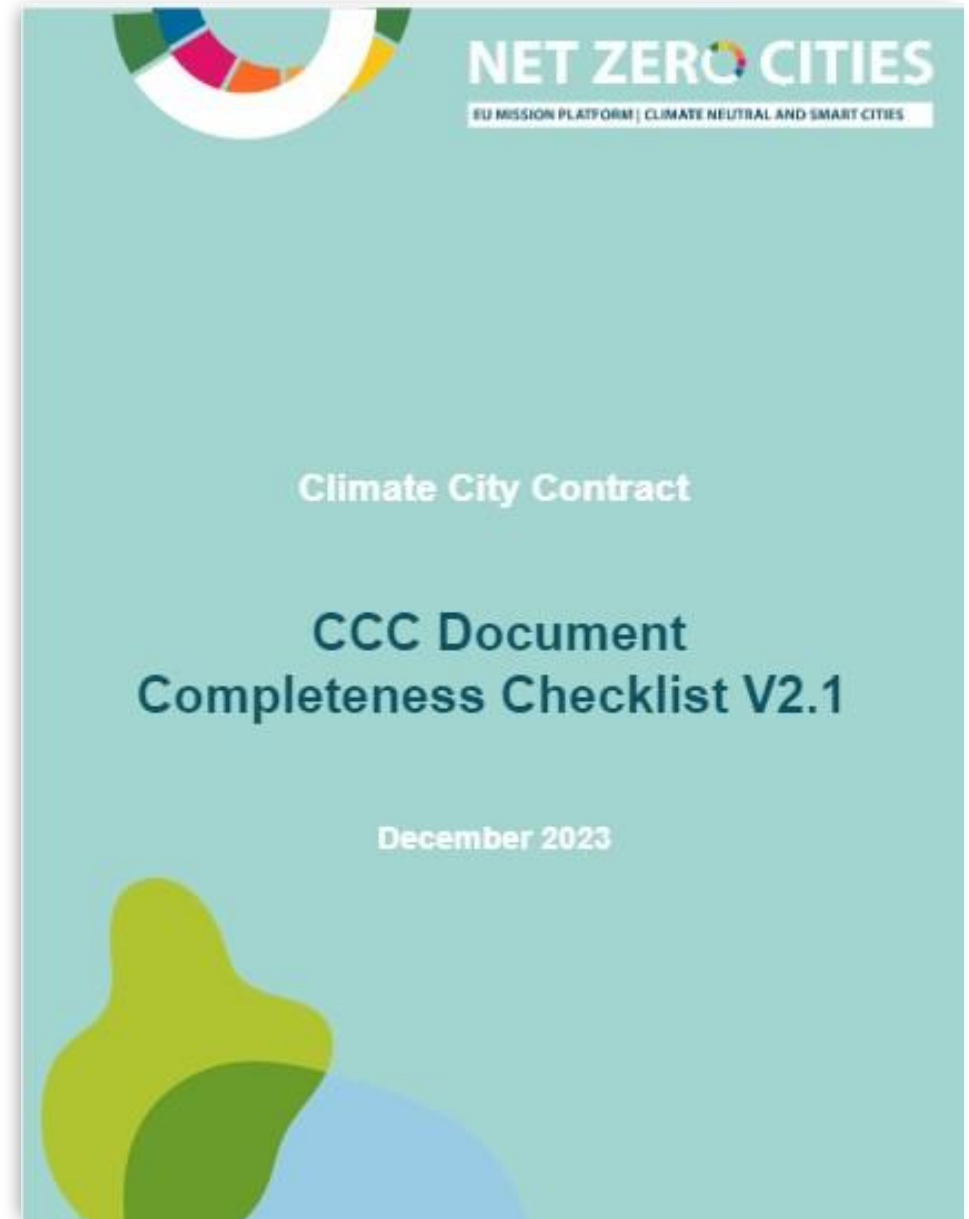
Unless otherwise noted the reuse of this presentation is authorised under the [CC BY 4.0](https://creativecommons.org/licenses/by/4.0/) license. For any use or reproduction of elements that are not owned by the EU, permission may need to be sought directly from the respective right holders.

Slide xx: [element concerned](#), source: [e.g. Fotolia.com](#); Slide xx: [element concerned](#), source: [e.g. iStock.com](#)



Look out for these questions:

- Q13: Are **all GHG gases** specified in the Mission Info Kit included in the inventory? **78%**
- Q15: Is the '**2030 emissions gap**' included in the CCC AP quantified and clearly explained? **78%**
- Q16: Does the CCC provide a strategy to address **residual emissions** in line with what is required by the Info Kit? **74%**
- Q23 and Q24: Does the CCC include **qualitative and quantitative indicators** to track progress ? Does the CCC describe **how learnings will inform the CCC development and iteration cycles**?





Key Points – Social Innovation

- Social innovation is clearly described and embedded in the CCCs as something different from citizens and stakeholder engagement and participation (THEY ARE NOT THE SAME).
- The social innovation projects described in the dedicated module of the Action Plan connect to the vision and impact pathways described throughout the different components of the CCCs.
- The actors mapped/informed/engaged in social innovation projects are described in other section of the CCCs. TOP IF they are part/signatories of the commitment document.
- The adoption of a systemic approach is shown throughout the document and the social innovation projects included in the document align with such approach.
- TOP: the impact pathways, portfolio of actions and related social innovation projects are clearly linked by the use of colours and visuals.





Investment plan & Innovative finance

BwB, EIB



Funded by
the European Union



EU Mission: Climate-Neutral and Smart Cities

TIPS FOR PREPARATION OF THE INVESTMENT PLAN

About EIB:

- Owned by the EU member states, established in 1958
- AAA rated International Financial Institution
- annual vol of EUR 60-80 billion (signed exposure)
- Climate Action a key priority. We are “the Climate Bank”

priorities



Our Contributing to EU CNC Mission

- Partner to the European Commission in various projects and actions
- Strong Urban Expertise offering lending and advisory
- Providing independent expert review of the City Climate Investment Plans
- Partner in the future Technical / Financial Assistance to Labelled cities

Our Tips for drafting an Investment Plan:

Section A

- Make sure your IP and AP are closely aligned
- Reflect your historical performance by presenting investments and corresponding GHG reduction achievements
- Comment on the budget planning including whether you introduced Climate Budgeting process
- Comment on ordinary financial planning and provide examples of financing schemes used in the past
- Comment on current debt levels and capacity to raise debt vis a vis the legal lending limits





Our Tips for drafting an Investment Plan:

Section B

- Check the proportions of the interventions and costs defined for key fields of action and % GHG inventory in the AP
- Present planned investments with credible investment costs indicating methodologies and necessary sources of data
- Compare your overall capex needs with the EUR 10,000 p.p benchmark of Material Economics
- Make sure your plan is made until 2030 and at best with yearly costs allocations
- Identify key investment schemes and assess opex and benefits related with their implementation including CO2 reduction
- Align financial plan with the overall capex plan indicating volumes/structures of instruments used



Our Tips for drafting an Investment Plan:

Section C

- Comment on risk management process, organisation structure, procedures, etc.
- Confirm your capacity to implement the plan and/or provide gap analysis identifying concrete needs
- Provide strategy for mobilising involvement of citizens and private sector including incentive mechanisms if appropriate
- Introduce tools and platforms you use for networking and coordinating activities between stakeholders involved in implementation of the plan

Thank you



European
Investment Bank | Group

What to avoid

SECTION A

Avoid allocation by city organization department

Avoid detailing a few specific investments. Present a holistic picture instead.

Avoid only providing internal municipal income sources (e.g. local tax). Provide external sources such as grants, green bonds

Avoid listing barriers without linking them to the potential capital sources

Avoiding assessment on internal capacity for raising capital

SECTION B

Avoid only costing for municipality entities. Include private stakeholders with emitting assets.

Avoid high level deployment of capital without linking it to individual projects

Avoid focusing on public funding sources with no consideration of private capital or blended finance

Avoid using the same monitoring process outlined in the Action Plan. Set up separate financial monitoring.

SECTION C

Avoid leaving this section blank.

Avoid generic risk identification. Identify them on project level.

Avoid high-level stakeholder mapping without considering their usefulness or potential for engagement.



Look out for these elements

Investment plan

Historical Data & Context – COHERENCE ✓

Does the CCC outline historical fiscal data for the municipality and detail budgetary processes for climate actions?

Investment Pathways

Does the CCC provide a breakdown of expected costs for the climate neutral transition?

Investment Pathways – COHERENCE ✓

Does the CCC provide a holistic breakdown of capital requirements for climate neutrality, including identifying costs assigned to other key stakeholders and steps to engage with these stakeholders?

Enabling Conditions – COHERENCE ✓

Does the CCC demonstrate an analysis of municipal capacity to plan and implement the financing of the climate neutral transition, including plans to address any gaps in knowledge or resource capacity?





Commitments and Narrative

ICLEI



Funded by
the European Union



Look out for these elements

Commitments, Governance and social innovation

Building a strong mandate , including Citizen Engagement and Regional /National – COHERENCE ✓

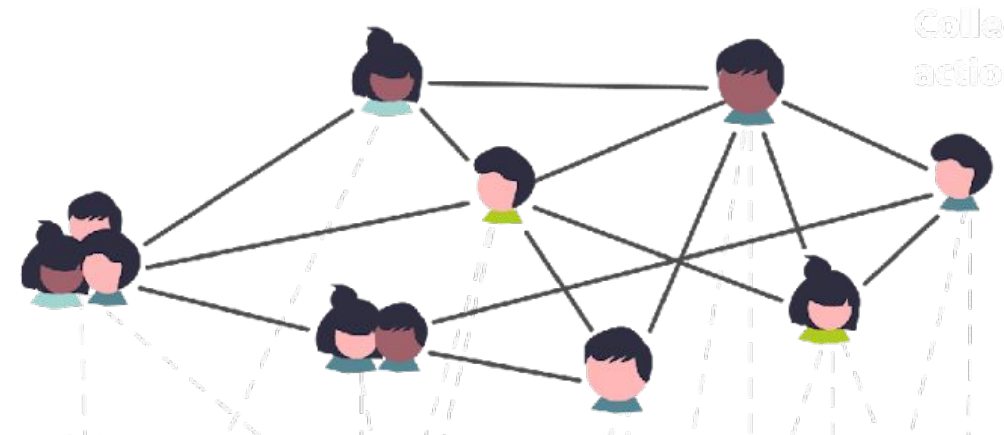
Does the CCC show that its **objectives** and **portfolio of actions** are supported by a strong mandate, resulting from co-creation with relevant stakeholders (including public bodies, NGOs, private actors, universities, as well as stakeholders at regional and national level) for instance in a multi-actor transition team or other forms of networked governance?

Signatories & actions' ownership – COHERENCE ✓

Is each action attributed to a responsible person/organisation represented among the signatories included in the Commitments document? If not, does the CCC describe an engagement strategy to address the lack of responsible actors or the lack of signed commitments?

Social innovation – COHERENCE ✓

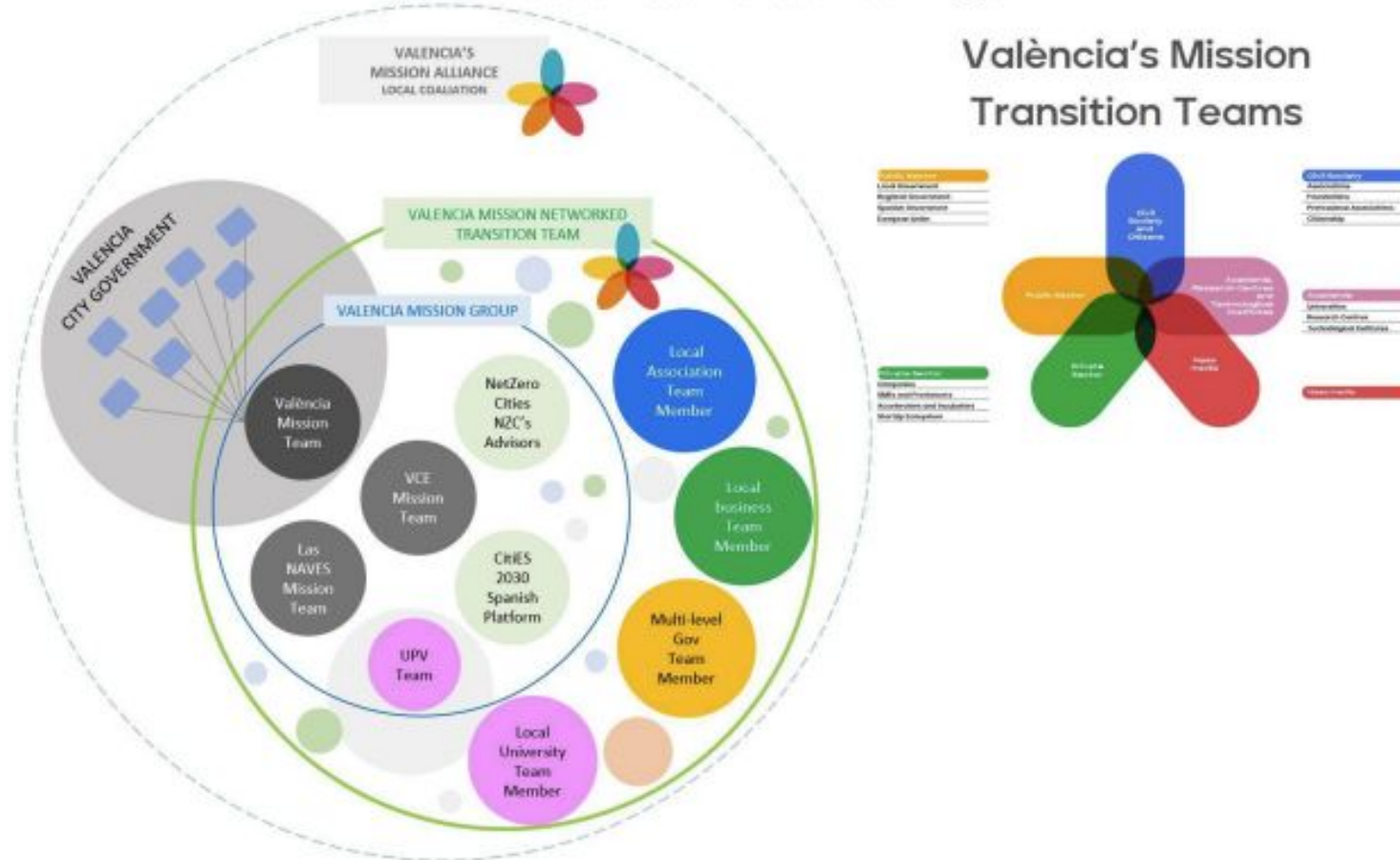
Does the CCC include enabling actions, aimed at boosting social innovations, to tackle previously identified systemic barriers (e.g. by adopting a systemic approach, creating favourable environments for community-led or bottom-up initiatives to emerge, stakeholder engagement and empowerment, etc.)?





Use visuals where you can

Figure 7: València's Mission Transition Team Diagram





CCC submission: **Window 4** timeline





All the best for your submission window!



EC: Window 2 CCC ceremony in Brussels, March 2024.

- Remember to "**pack your CCC bag**": use the **checklist** from today!
- Share your city's **story**, and **back it up** with evidence and detail.
- **Ask for help**: Make the most of consortium and peer support.
 - **4 September**, Pre-Submission Info Session
 - **Online**
FAQs: <https://netzerocities.app/FAQ-665996c11cd89>
- **Most importantly: Enjoy the ride!**



Get in touch with NetZeroCities!



[@NetZeroCitiesEU](https://twitter.com/NetZeroCitiesEU)



[NetZeroCities](https://www.instagram.com/NetZeroCities)



[NetZeroCitiesEU](https://www.linkedin.com/company/NetZeroCitiesEU)



[NetZeroCities EU](https://www.youtube.com/NetZeroCitiesEU)



www.netzerocities.eu



hello@netzerocities.eu

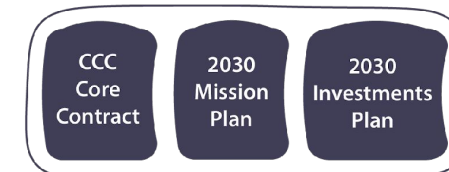


Funded by
the European Union



Commitments Document

- The Commitments document is the **core component** of the CCC. The AP and the IP are supporting Annexes.
- A compelling and inclusive narrative. A **unique, locally shaped** shared vision and narrative. How did you **localized** the Cities Mission to make it **tailored** to your context?
- **Systemic approach to governance.**
- **Iterative (and continuous) participative nature of the CCC.** Democratic infrastructures for distributed leadership. The city as enabler.
 - **Beyond information and behaviour change.** Enabling collective action through different spaces and formats to the different stakeholders and citizens.
 - **Beyond formal spaces.** Convivial and informal dimension of engagement.
- **From ideation con concrete Action planning with citizens.**
- **Linking climate priorities to urban planning and city-building goals.**





Look out for these questions

GHG inventory and portfolio of actions

Neutrality Target – COHERENCE ✓

Does the CCC include a clear 2030 climate neutrality target specifying any exclusions (areas, sectors, sources, gases, scopes) in line with the EoI?

GHG Inventory (geographic boundaries) – COHERENCE ✓

Are the geographic coverage of the GHG inventory and any exclusions (areas, sectors, sources, gases, scopes) described, and do these align with the 2030 Climate Neutrality Target coverage?

GHG Inventory (gases)

Are all GHG gases specified in the Mission Info Kit included in the inventory? If using CO₂-equivalent, is the calculation methodology for emission factors included (i.e. which gases are present under the “equivalent”)?

Emissions gap – COHERENCE ✓

Is the '2030 emissions gap' included in the CCC AP quantified and clearly explained?

Portfolio of actions – COHERENCE ✓

Is each action associated with an estimate of emission reductions to coherently address the emissions gap?

